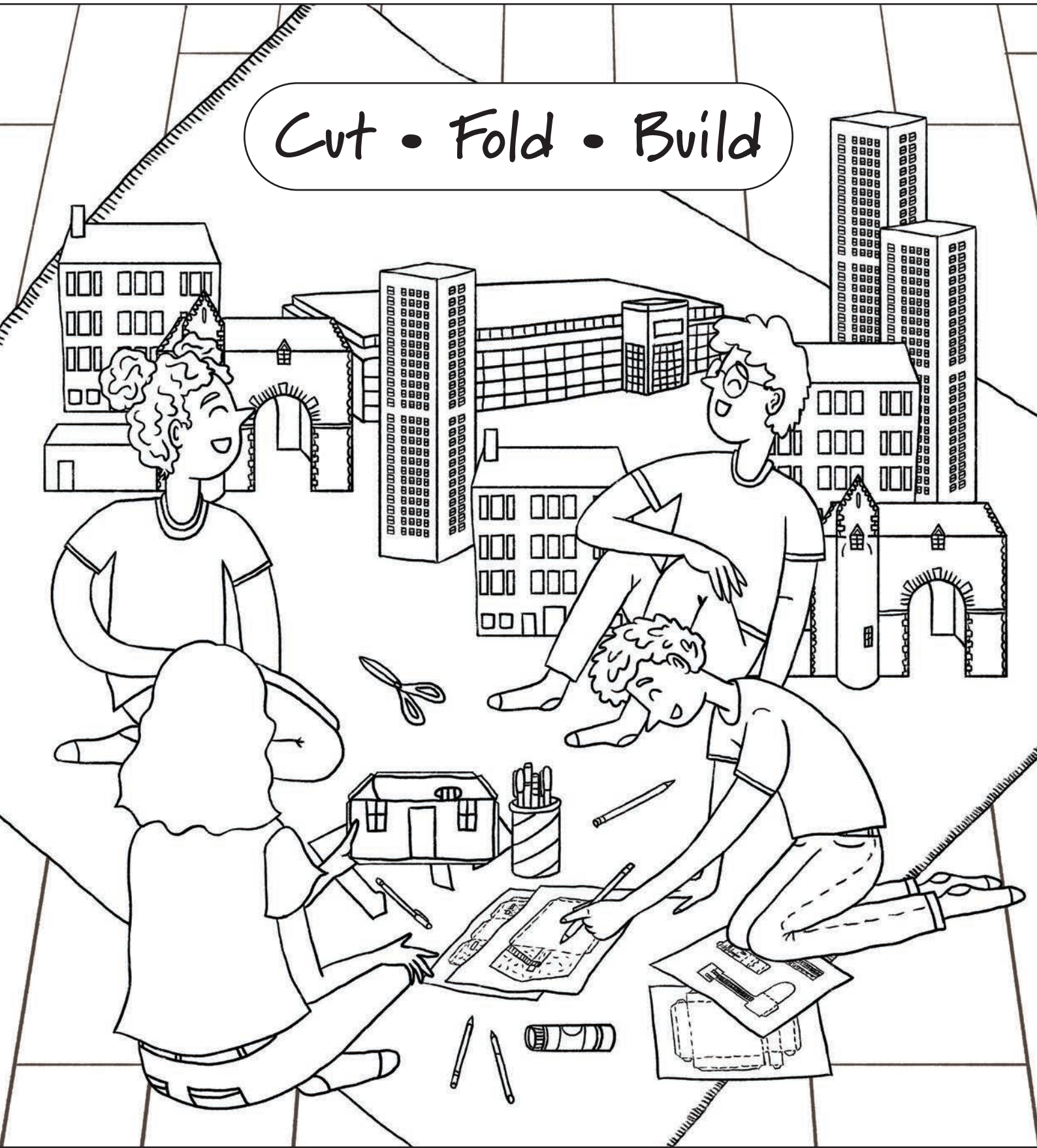


Build Scotland in your living room by making 11 paper models of Scottish buildings!

Cut • Fold • Build



Cut • Fold • Build is a Doors Open Days 2019 legacy project delivered by Scottish Civic Trust. This project is part-financed by the Scottish Government and the European Community Argyll and the Isles and Outer Hebrides Leader 2014-2020 Programme.

Introduction

We at Scottish Civic Trust created 11 templates of Scottish buildings that you can assemble in your own home. You can build everything from tenements and tower blocks to medieval chapels and 17th century homes.

We've included some examples of constructed models below, but these are just the beginning. You could do some research into Scottish buildings and build lifelike paper reconstructions. Or let your imagination run wild – maybe you think Shetland crofts would look nice with stained glass windows, or perhaps a metallic gold tenement is in order!

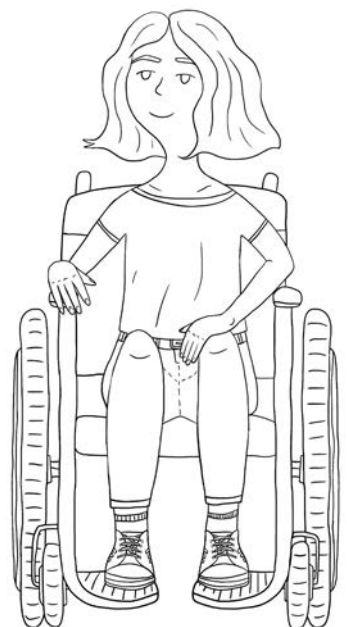
We'd love to see what you come up with, so make sure to share your creations with us on Facebook, Twitter and Instagram by tagging **@scotcivictrust** and using the hashtag **#CutFoldBuild**.

Contents

Materials List	2
Learning Objectives	3
Instructions	3
Cut • Fold • Build Templates	4

Materials list

- For printing - A4 paper
- For decorating - Crayons, markers, pencils, paint
- For cutting - Scissors
- For assembling - Tape or glue



Learning objectives

If you are a teacher or are homeschooling children, and wanted to include Cut • Fold • Build in your lesson plan, we've suggested some learning objectives and Curriculum for Excellence alignments.

○ Pupils will construct and decorate scale models of Scottish buildings

Having investigated where, why and how scale is used and expressed, I can apply my understanding to interpret simple models, maps and plans.

Mathematics 2-17d

I can use a range of graphic techniques, manually and digitally, to communicate ideas, concepts or products, experimenting with the use of shape, colour and texture to enhance my work.

Technology 2-11a

I can extend and enhance my design skills to solve problems and can construct models.

TCH 2-09a

○ Pupils will interact with Scotland's built environment through a playful interrogation of its form (decorating models, arranging townscapes)

Inspired by a range of stimuli, I can express and communicate my ideas, thoughts and feelings through activities within art and design.

Expressive Arts 2-05a

I can create and present work that shows developing skill in using the visual elements and concepts.

Expressive Arts 2-03a

Instructions

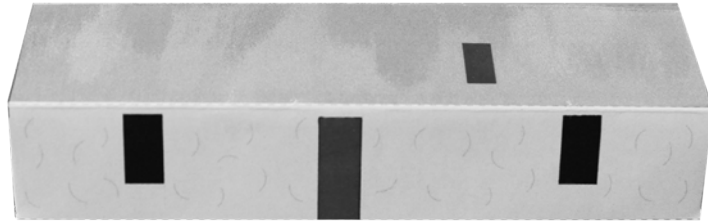
Constructing the buildings is straightforward – you just follow some simple instructions: a thick solid line = cut; a dashed line = fold; and a dot pattern = glue. We've also provided some numbers on the template to indicate the recommended sequence of assembly. Some templates are more complex and require multiple pieces of paper for assembly.

The templates are listed in this pack from easiest to more difficult.

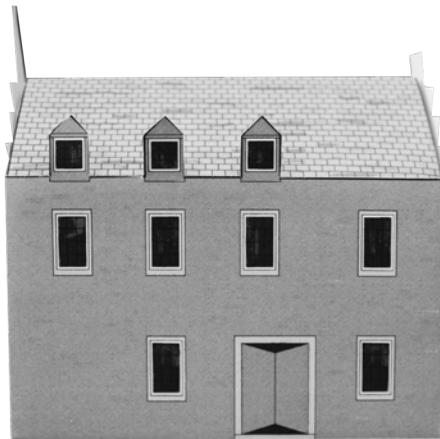


Easy templates

Shetland Croft



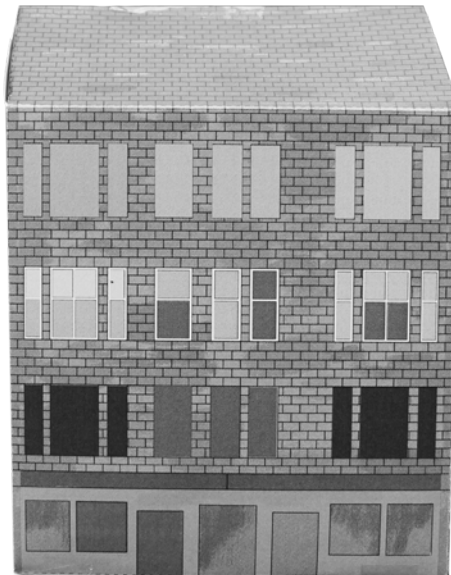
17th Century House



Tower Block



Tenement



Shops



Please note: Tenement, Tower Block and 17th Century House templates were designed originally by staff of Scotland's Urban Past, a community-led programme at Historic Environment Scotland which ran from 2014 to 2019.

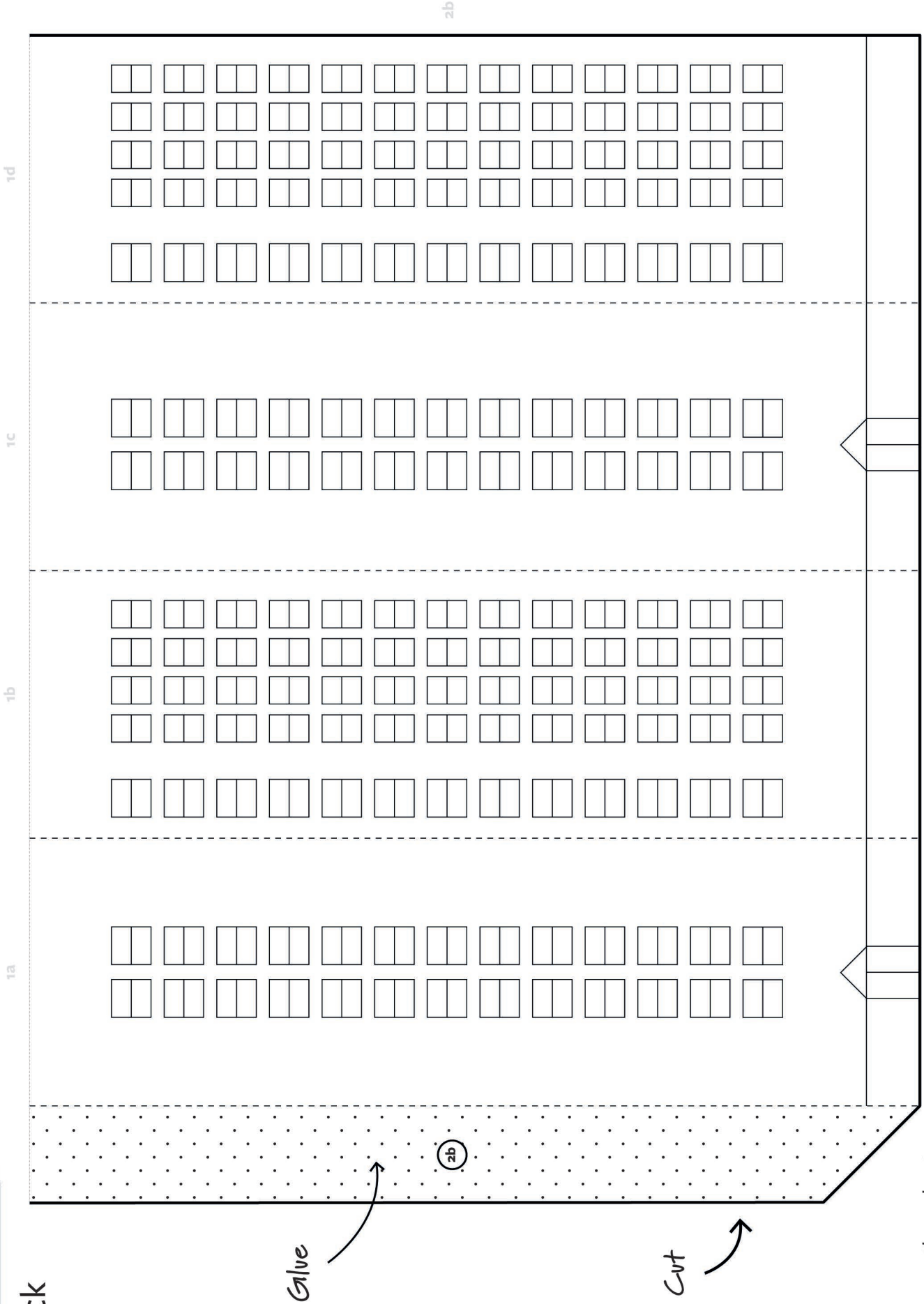
Cut • Fold • Build

Tower Block

Sheet 1 of 2

Level: Easy

This model is based on tower blocks in Scottish cities



Follow the numbers on the 2 sheets to glue your model together.

Scale 1:400

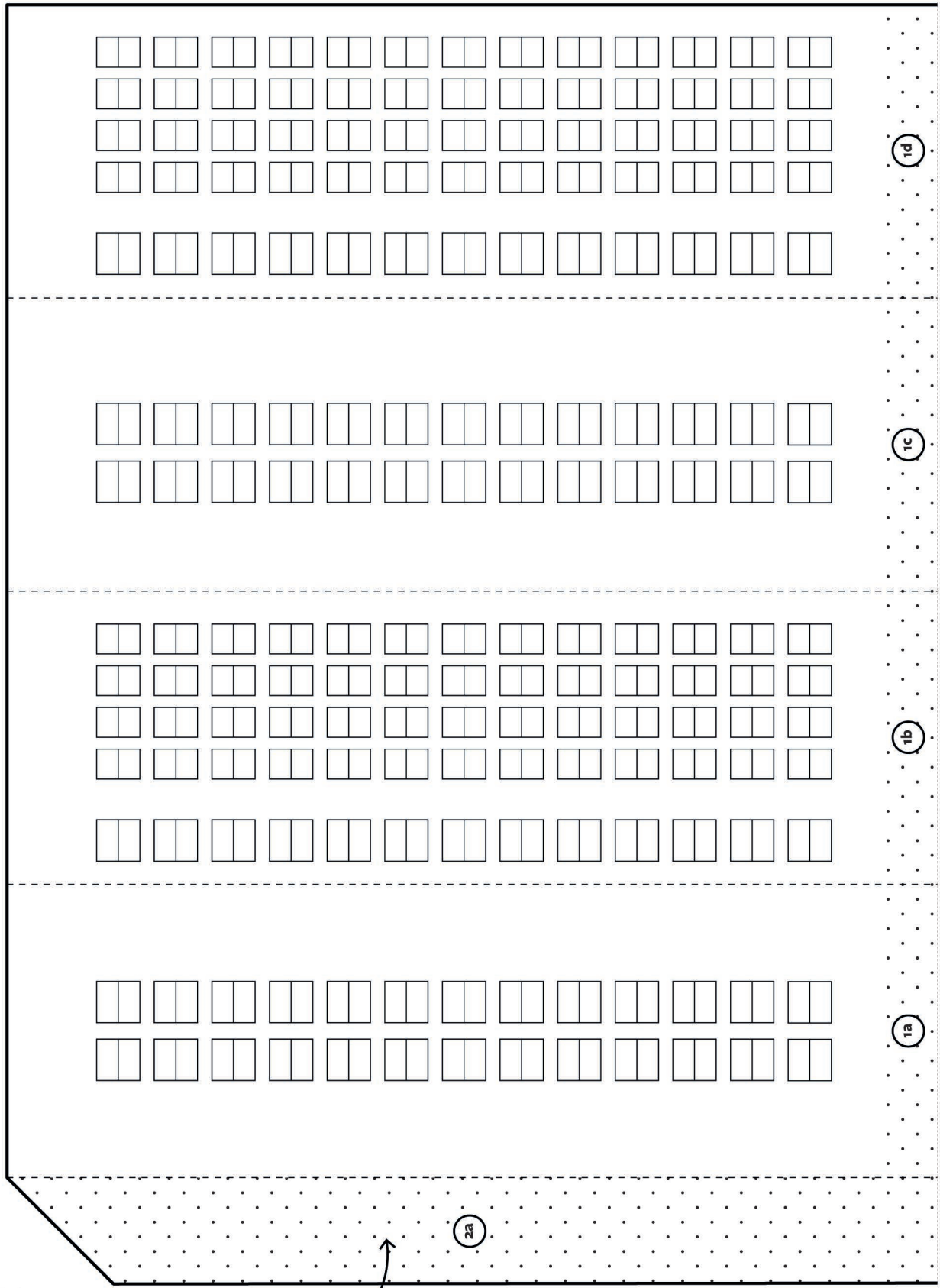
This model is based on tower blocks in Scottish cities

Cut • Fold • Build

Tower Block

Sheet 2 of 2

Level: Easy



2a

Cut

Glue

Fold

Follow the numbers on the 2 sheets to glue your model together.

Scale 1:400

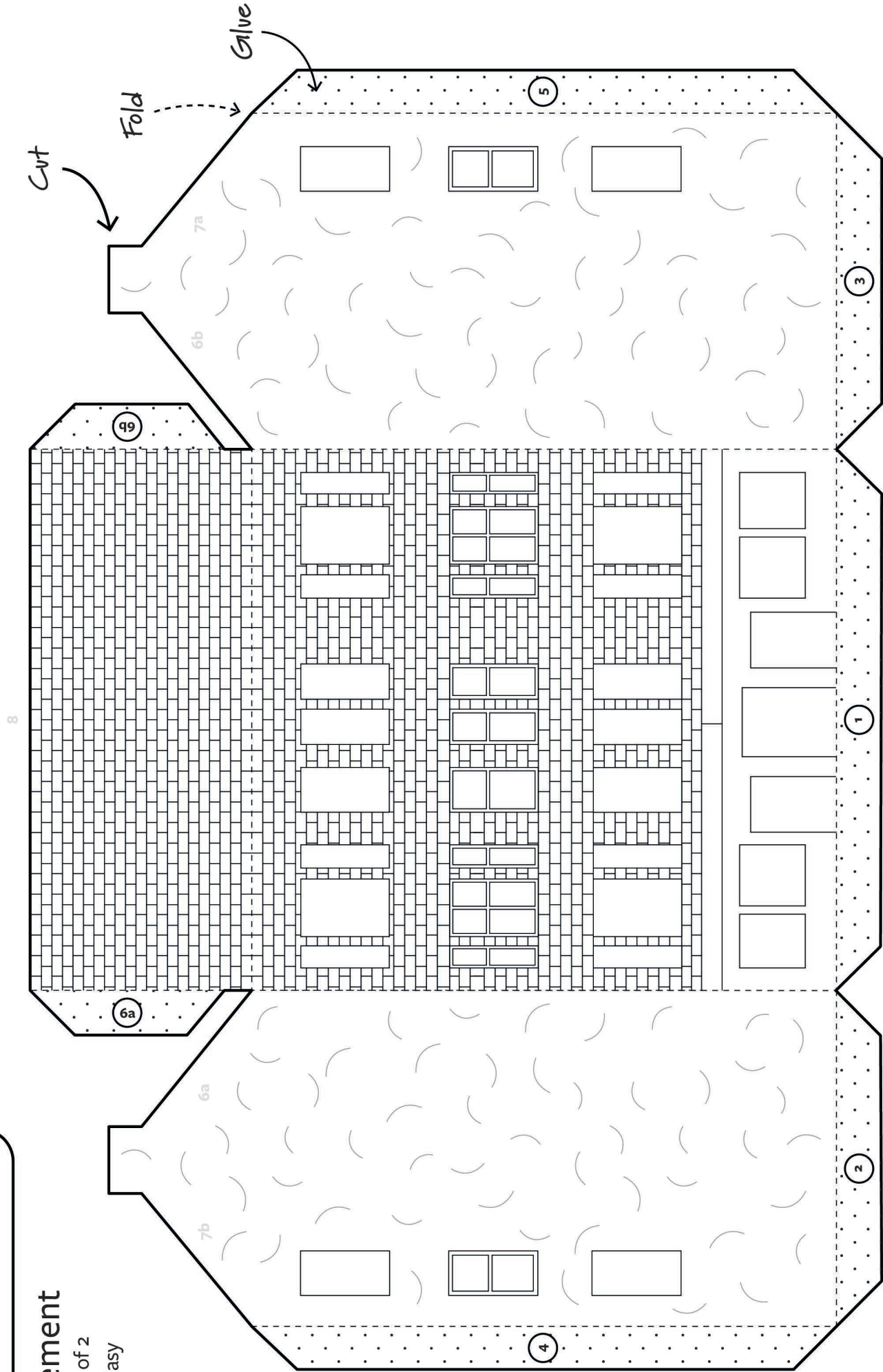
Cut • Fold • Build

Tenement

Sheet 1 of 2

Level: Easy

This model is based on a tenement in Trongate, Glasgow



Follow the numbers on the 2 sheets to glue your model together.

Scale 1:100

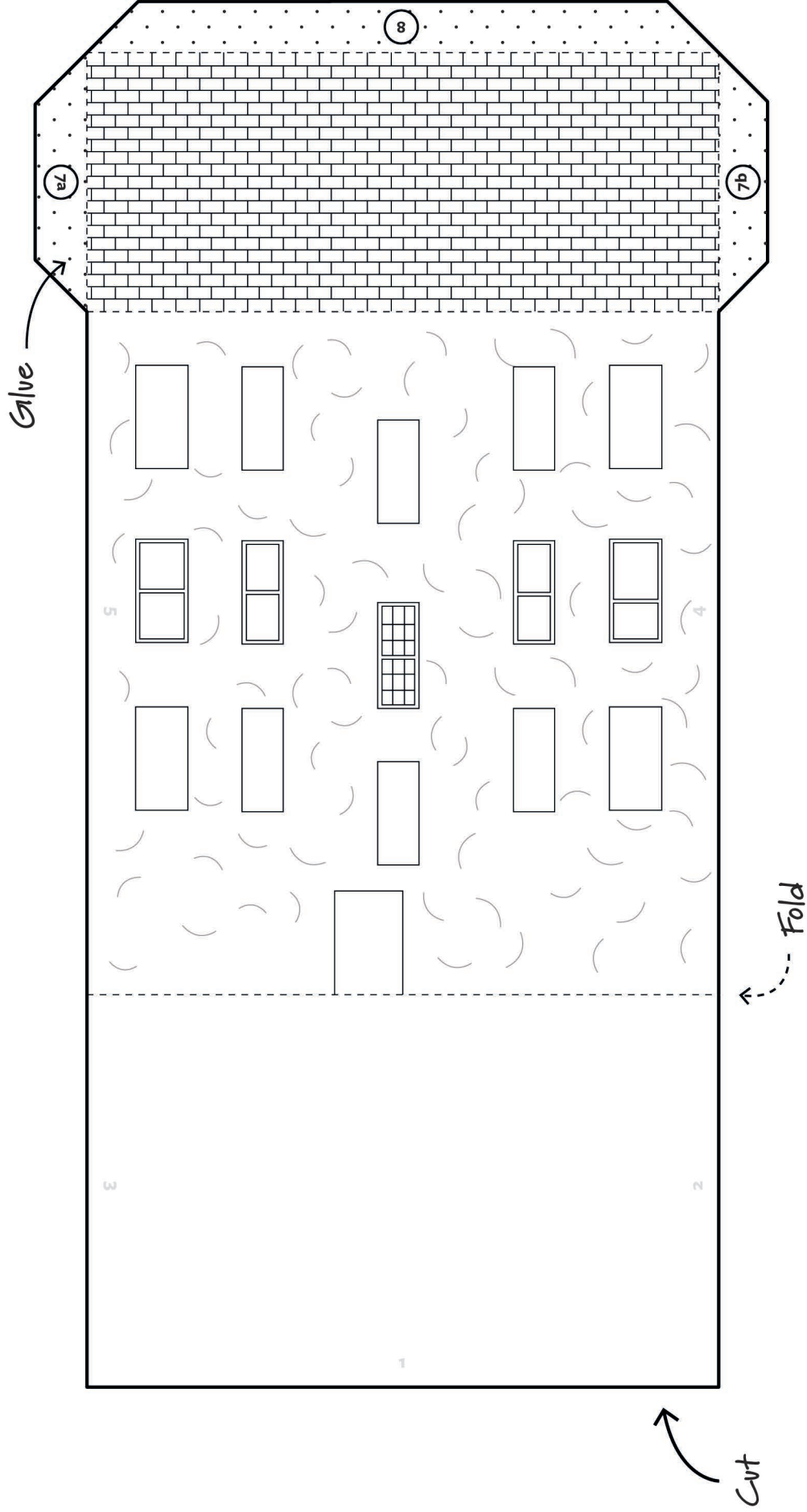
Cut • Fold • Build

This model is based on a tenement in Trongate, Glasgow

Tenement

Sheet 2 of 2

Level: Easy



Follow the numbers on the 2 sheets to glue your model together.

Scale 1:100

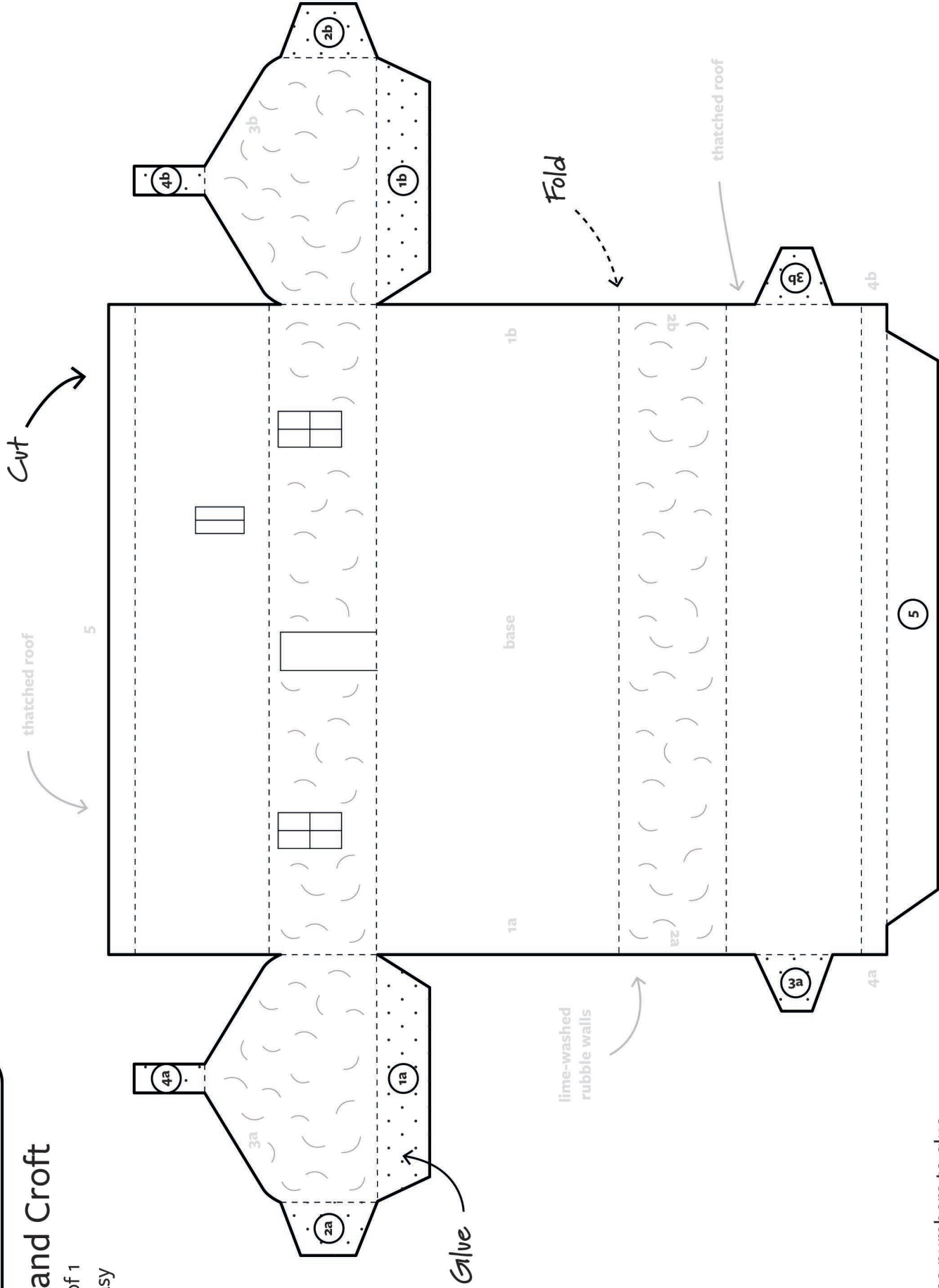
Cut • Fold • Build

Shetland Croft

Sheet 1 of 1

Level: Easy

This model is based on Easthouse Croft
West Burra, Shetland



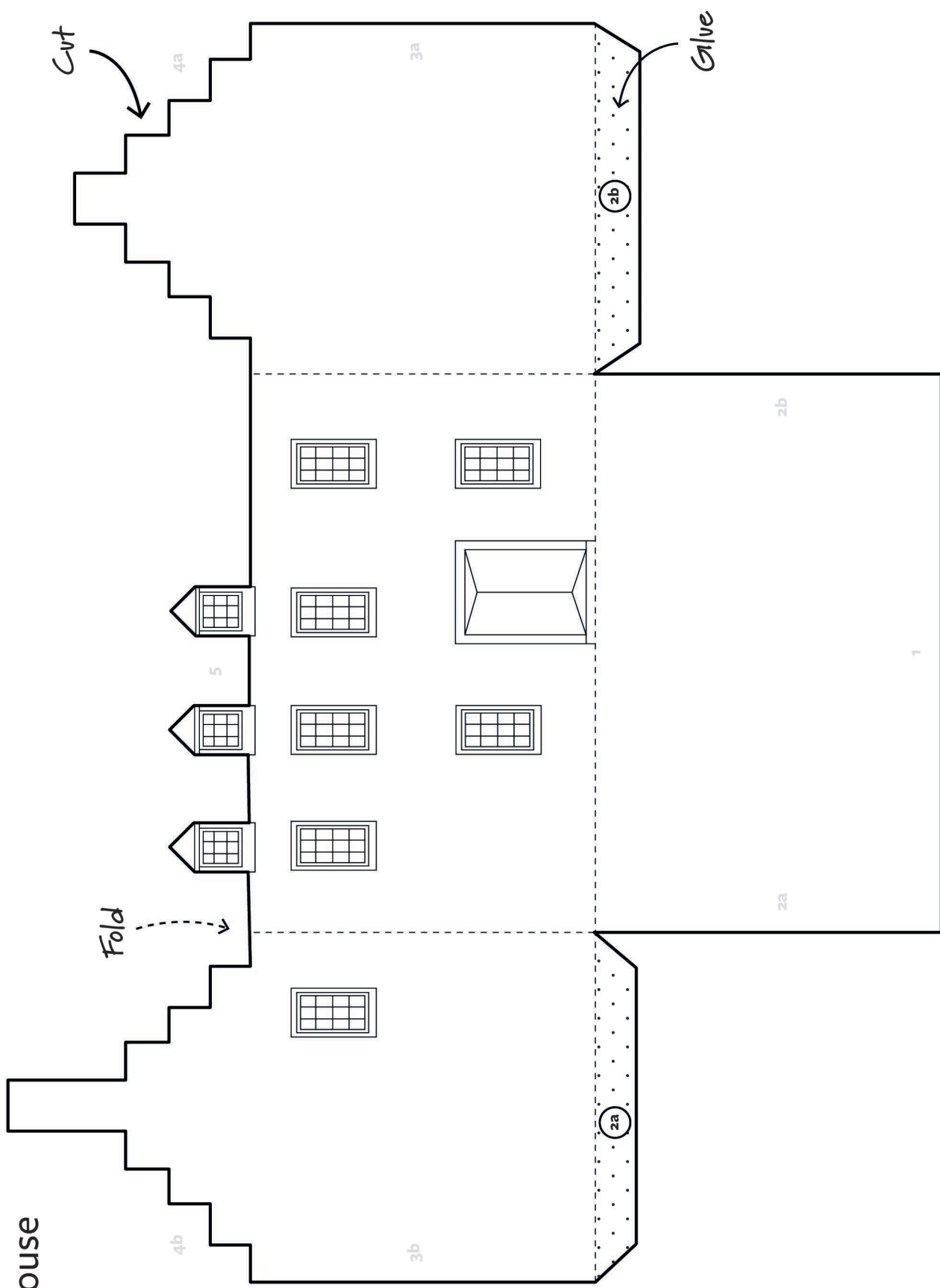
Follow the numbers to glue
your model together.

Scale 1:100

17th Century House

Sheet 1 of 2

Level: Easy

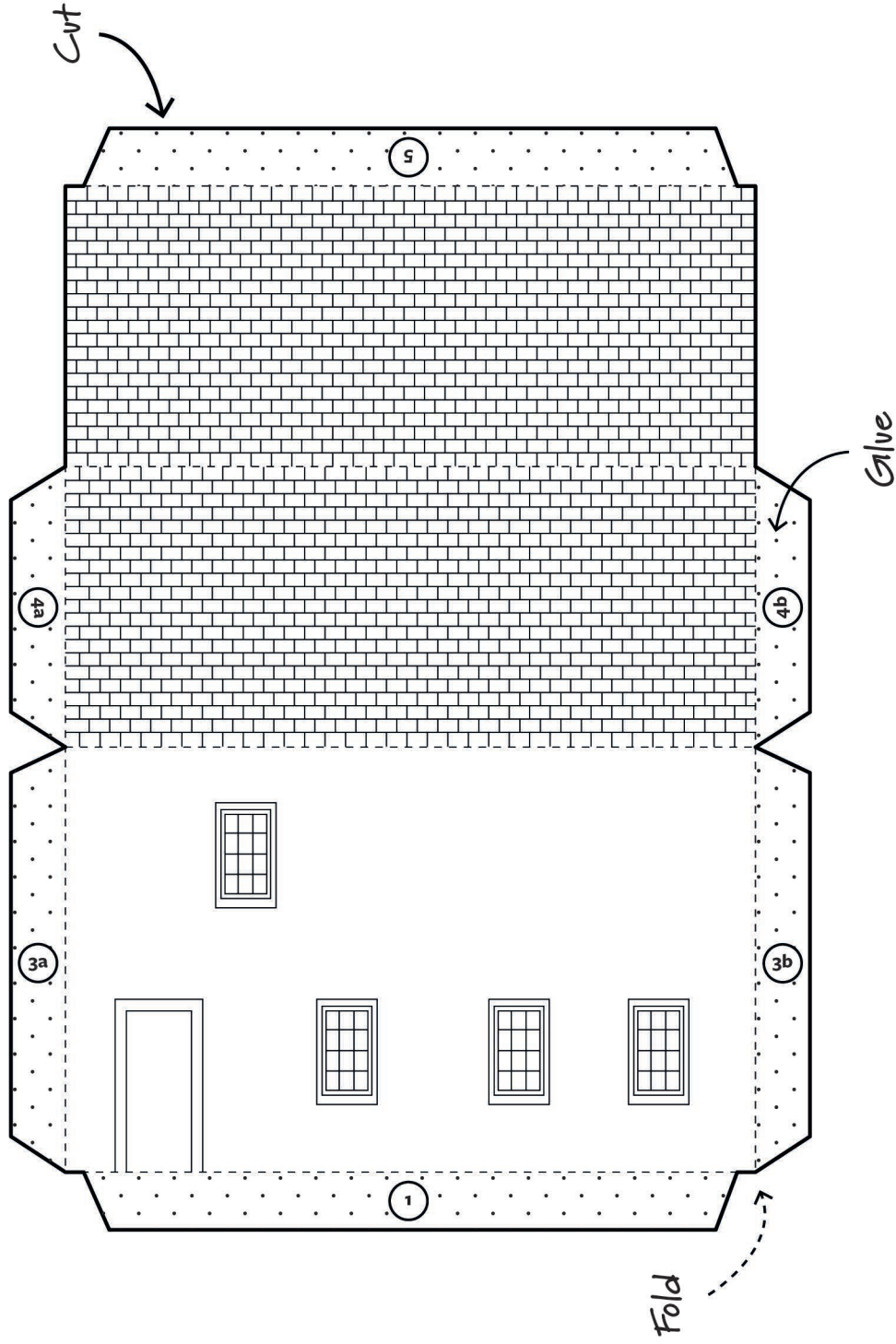


Follow the numbers on the 2 sheets to glue your model together.

17th Century House

Sheet 2 of 2

Level: Easy



Follow the numbers on the 2 sheets to glue your model together.

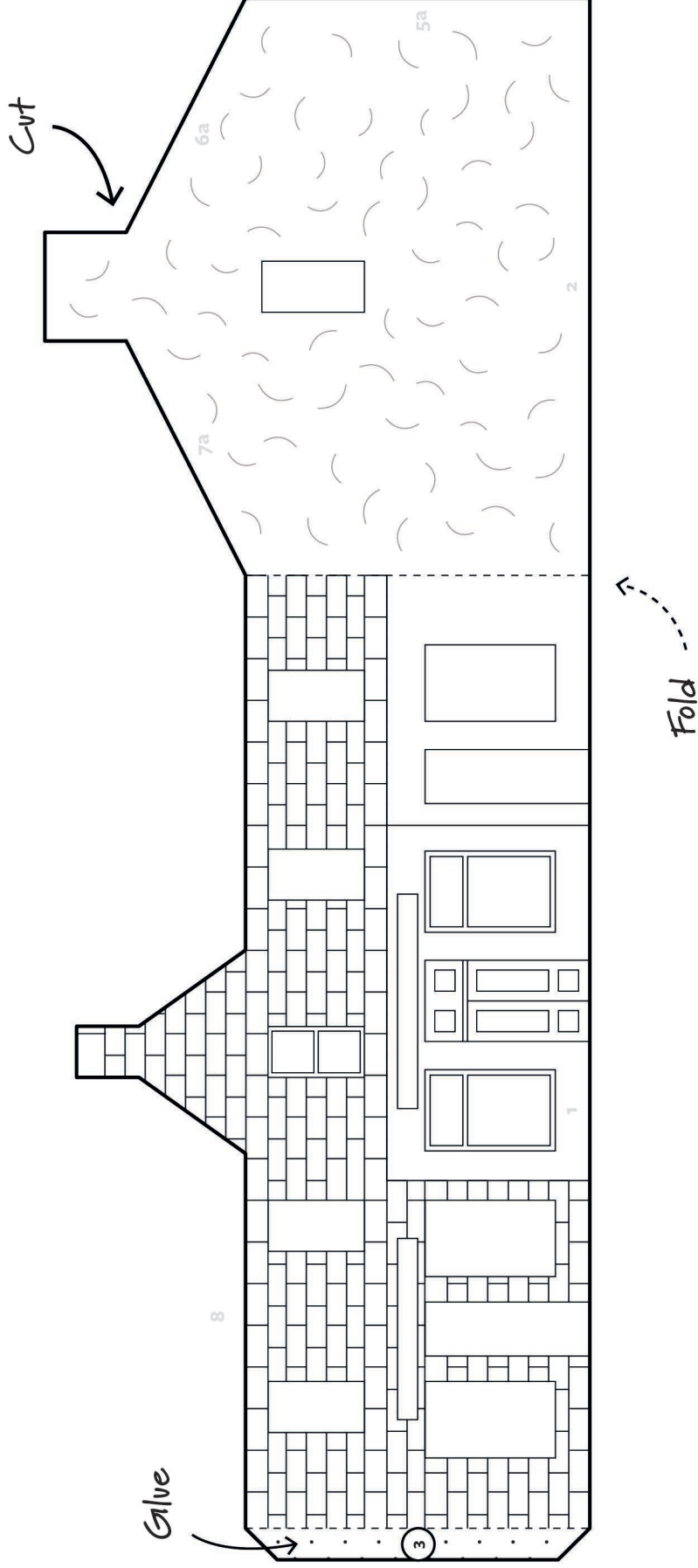
Cut • Fold • Build

This model is based on Main Street shops
Tobermory, Mull

Shops

Sheet 1 of 3

Level: Easy



Follow the numbers on the 3 sheets
to glue your model together.

Scale 1:100

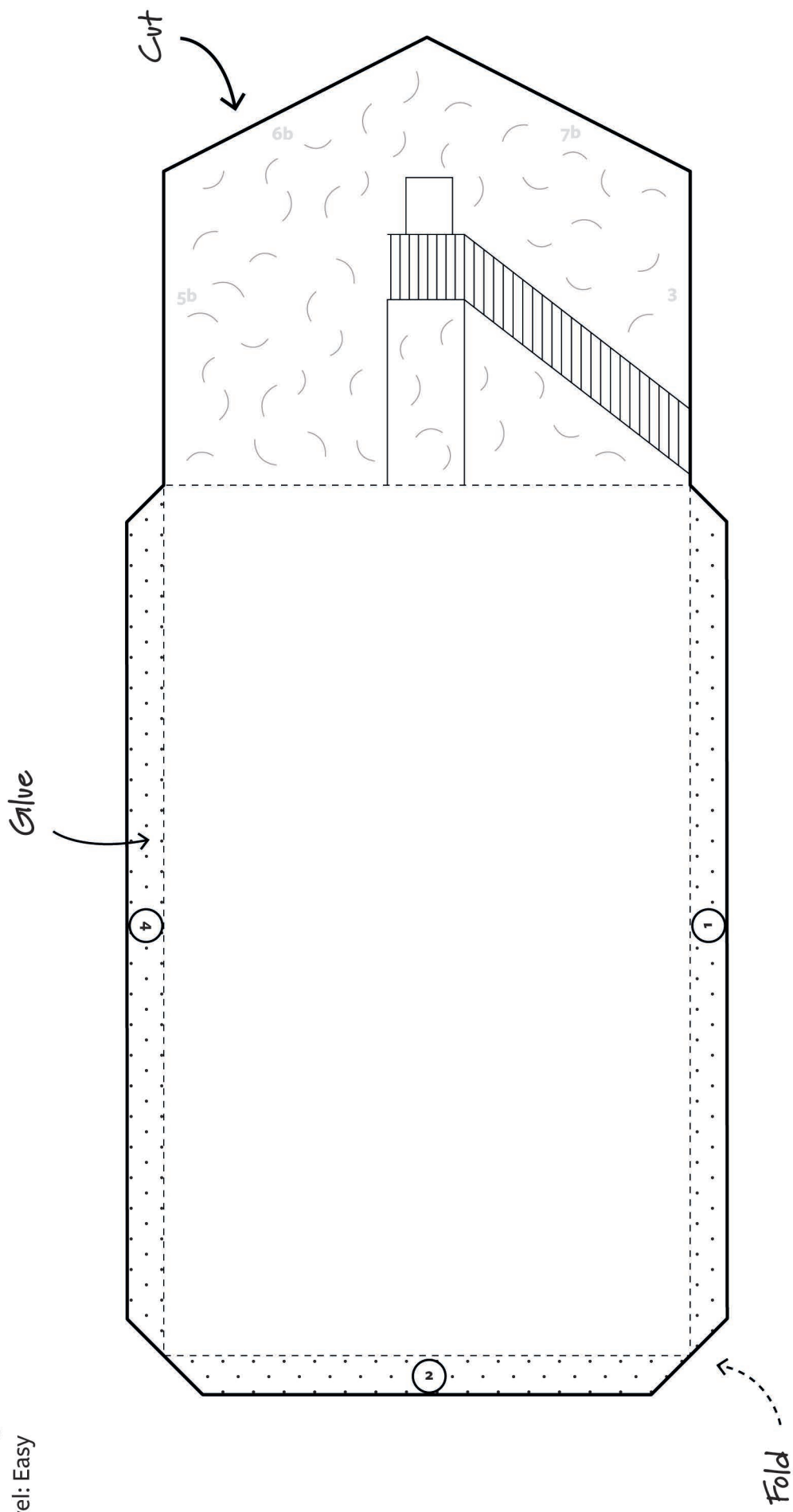
Cut • Fold • Build

Shops

Sheet 2 of 3

Level: Easy

This model is based on Main Street shops
Tobermory, Mull



Follow the numbers on the 3 sheets
to glue your model together.

Scale 1:100

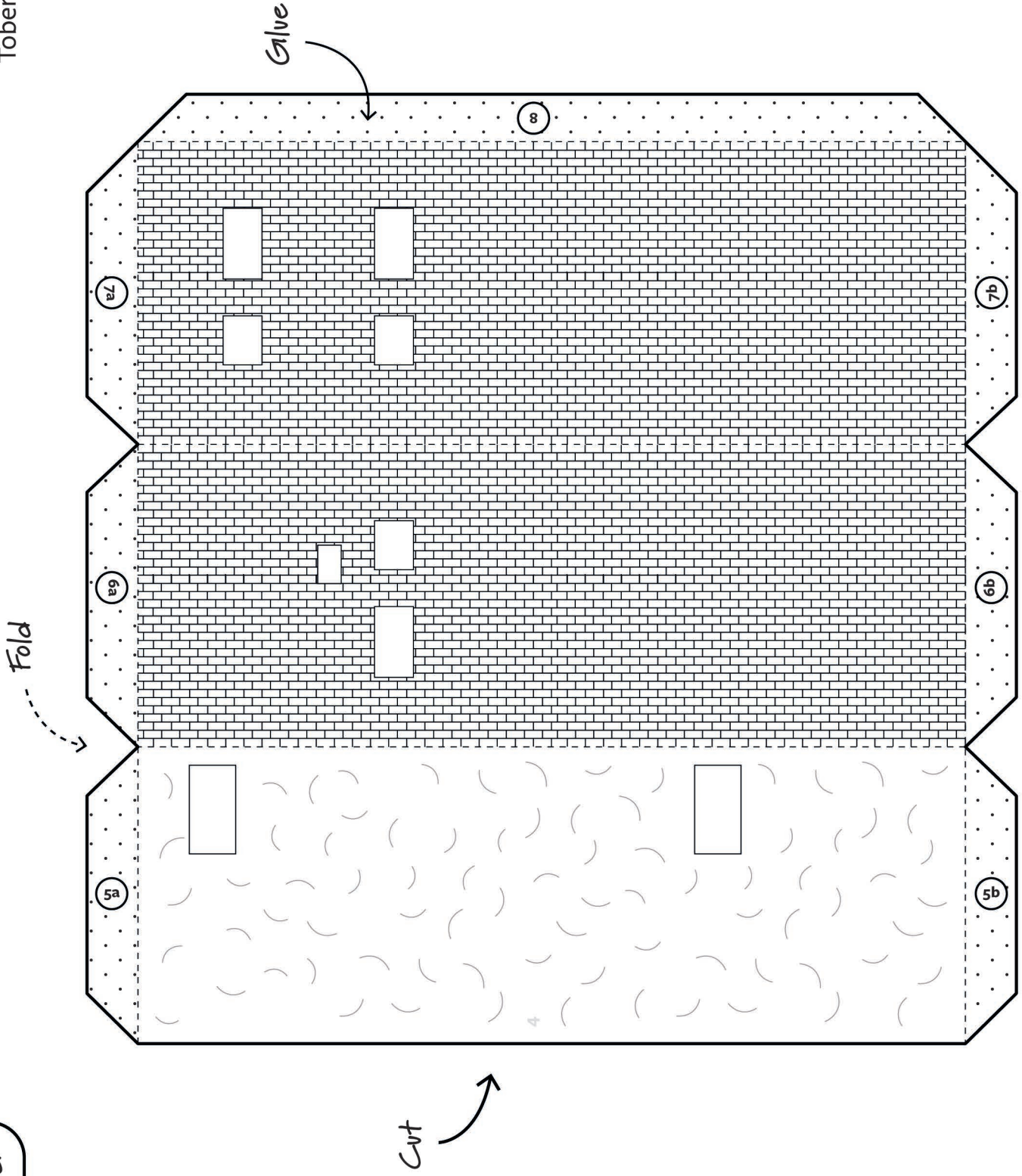
This model is based on Main Street shops
Tobermory, Mull

Cut • Fold • Build

Shops

Sheet 3 of 3

Level: Easy



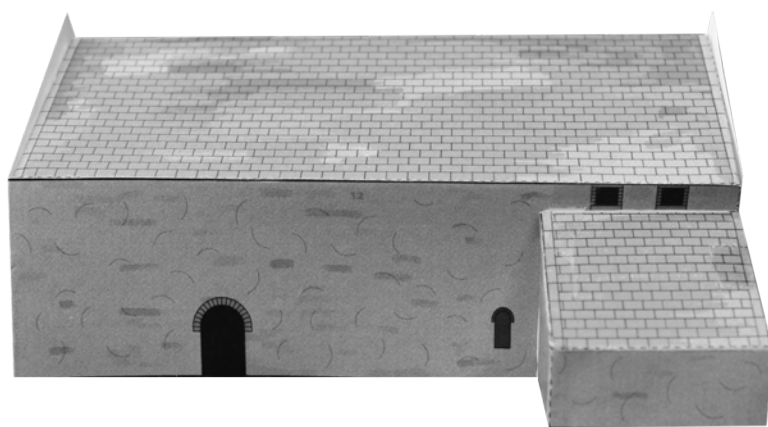
Follow the numbers on the 3 sheets
to glue your model together.


Scale 1:100

Medium templates



Supermarket 



Chapel 

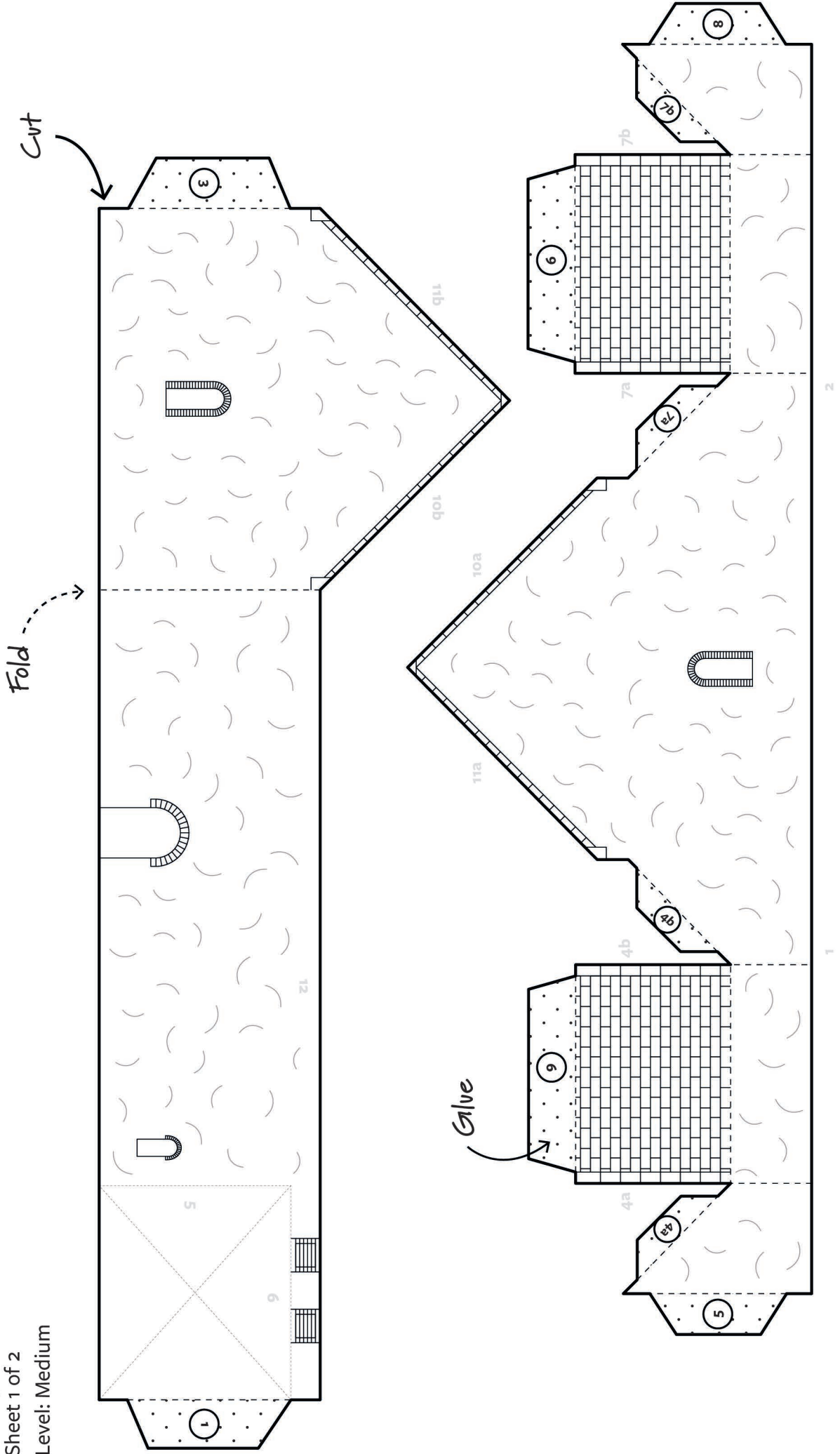
Cut • Fold • Build

This model is based on St Morag's Chapel
Eoropaidh, Isle of Lewis

Chapel

Sheet 1 of 2

Level: Medium



Follow the numbers on the 2 sheets
to glue your model together.

Scale 1:100

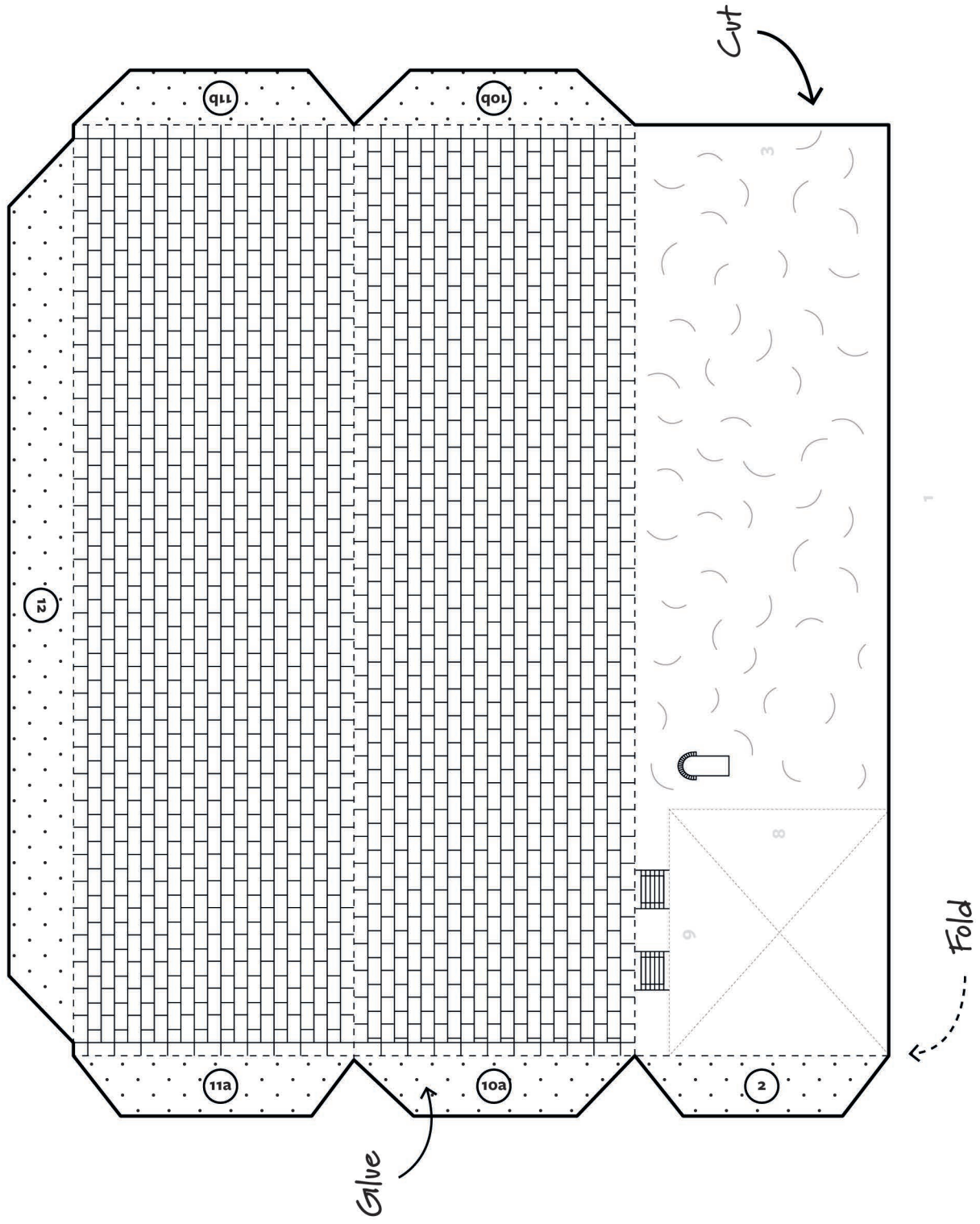
This model is based on St Morag's Chapel
Eoropaidh, Isle of Lewis

Cut • Fold • Build

Chapel

Sheet 2 of 2

Level: Medium



Follow the numbers on the 2 sheets
to glue your model together.

Scale 1:100

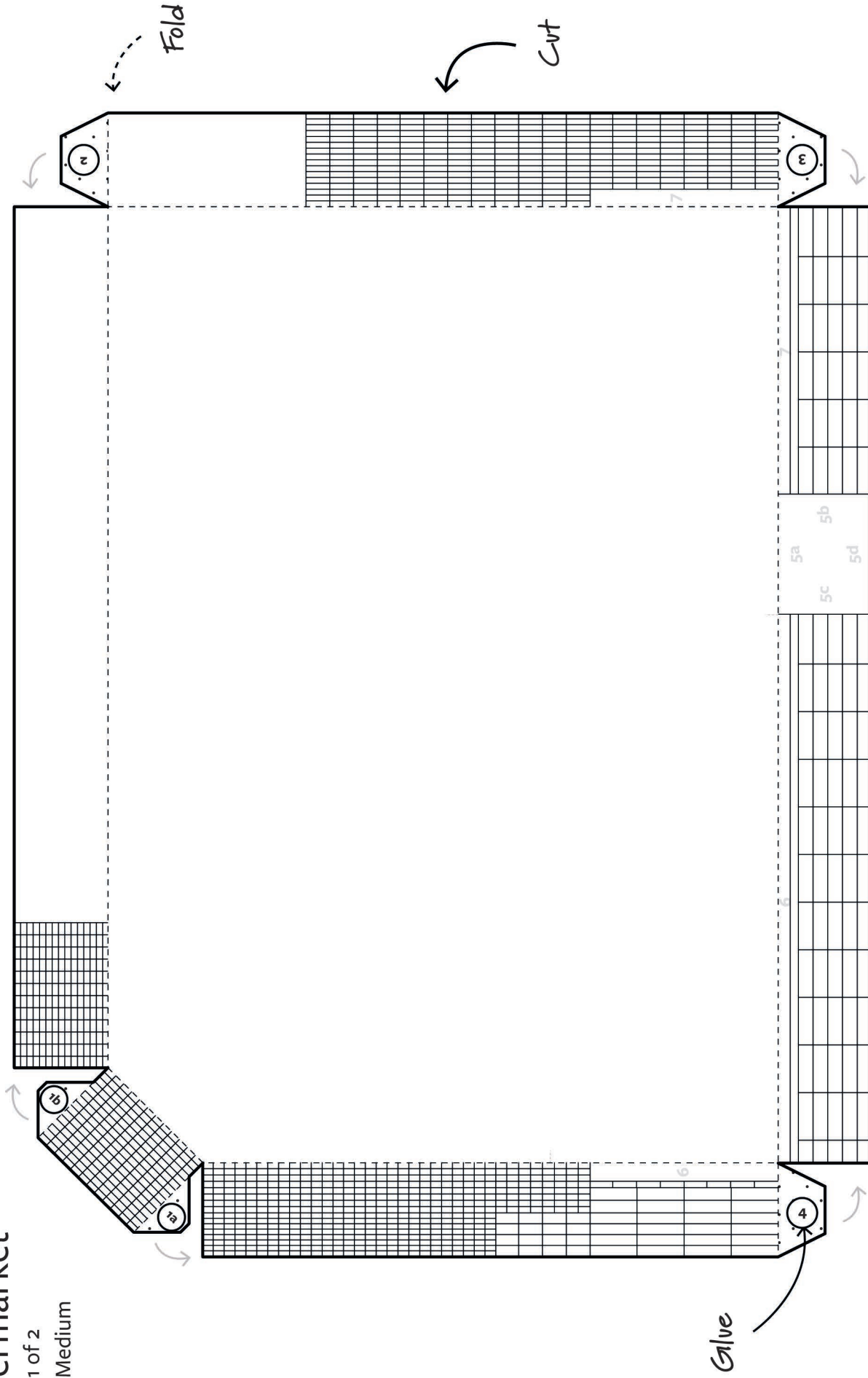
Cut • Fold • Build

This model is based on Tesco Superstore, Dingwall

Supermarket

Sheet 1 of 2

Level: Medium



Follow the numbers on the 2 sheets to glue your model together.

Scale 1:400

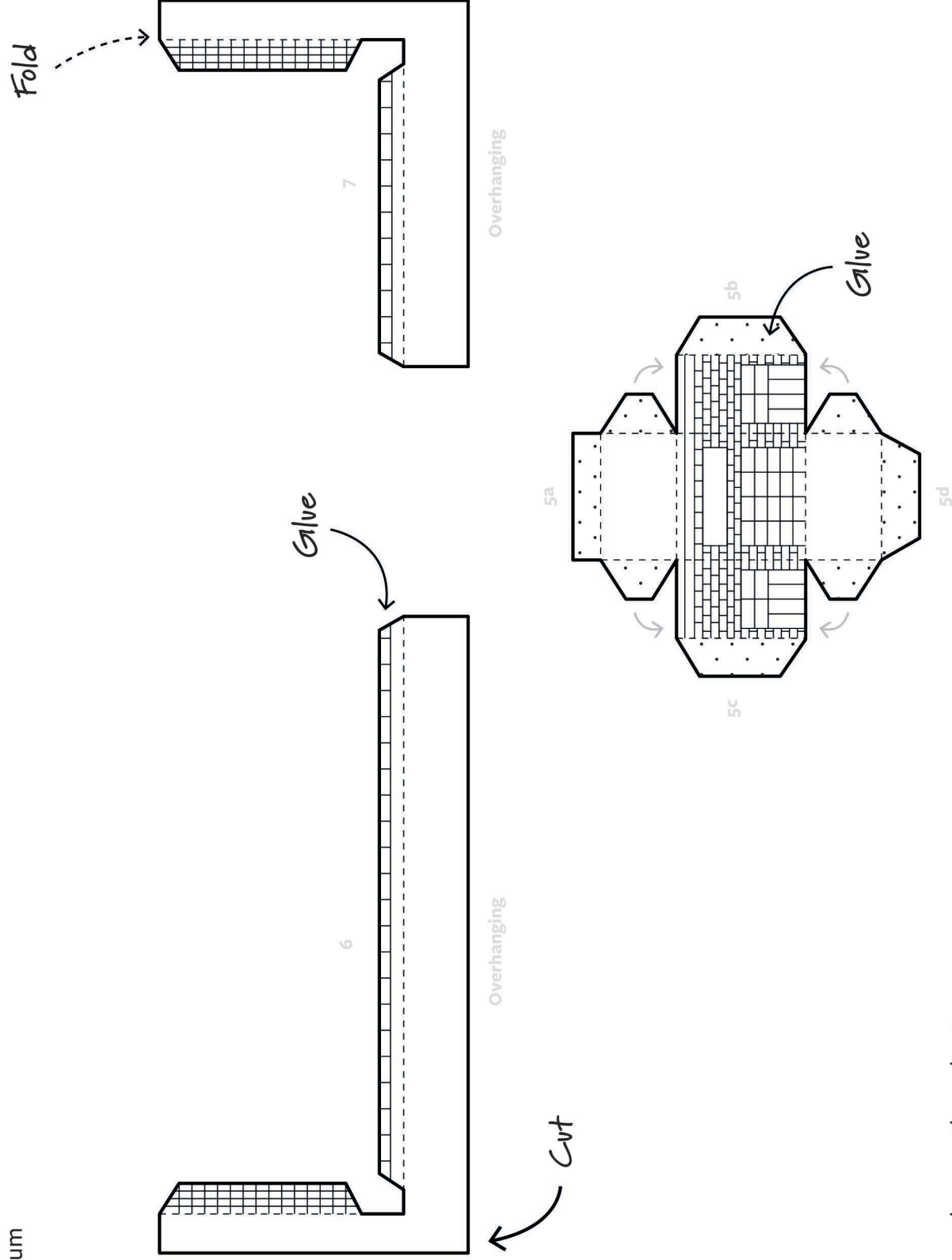
Cut • Fold • Build

This model is based on Tesco Superstore, Dingwall

Supermarket

Sheet 2 of 2

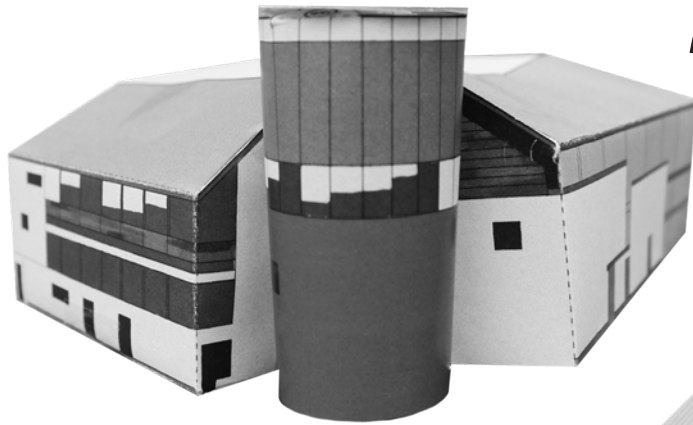
Level: Medium



Follow the numbers on the 2 sheets to glue your model together.

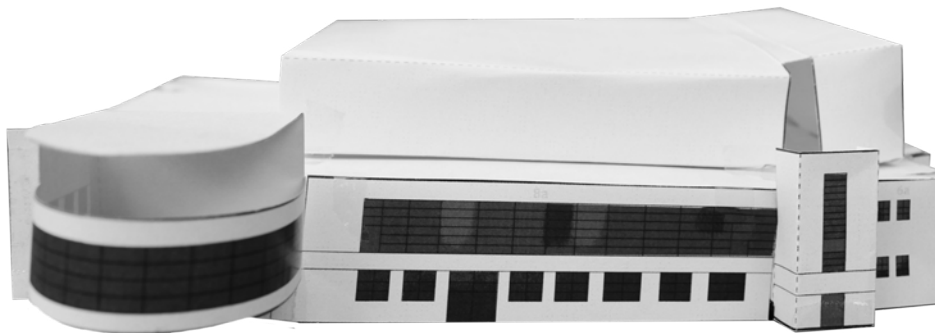
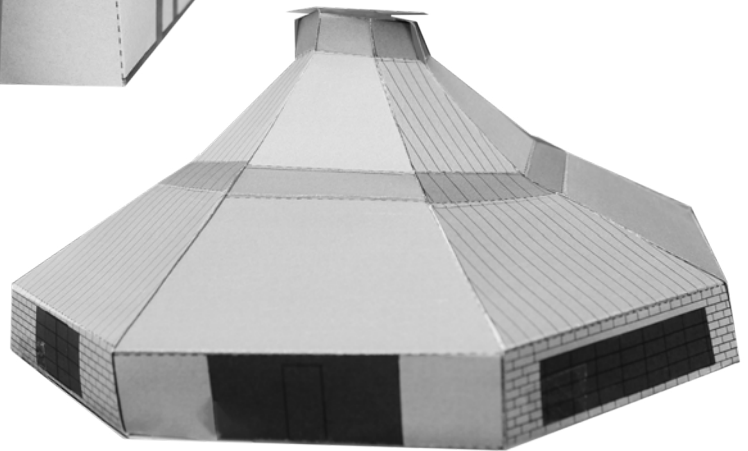
Scale 1:400

Difficult templates



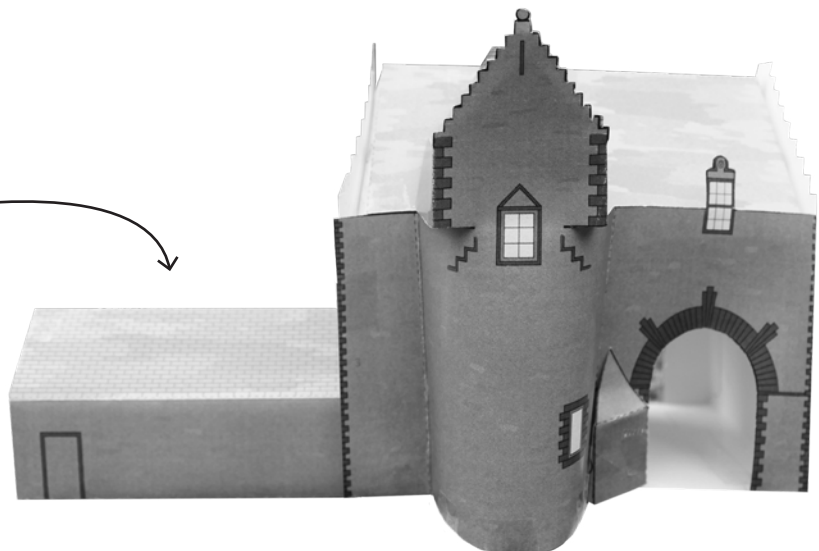
An Lanntair

Ferry Terminal



Pavilion

Gate Lodge



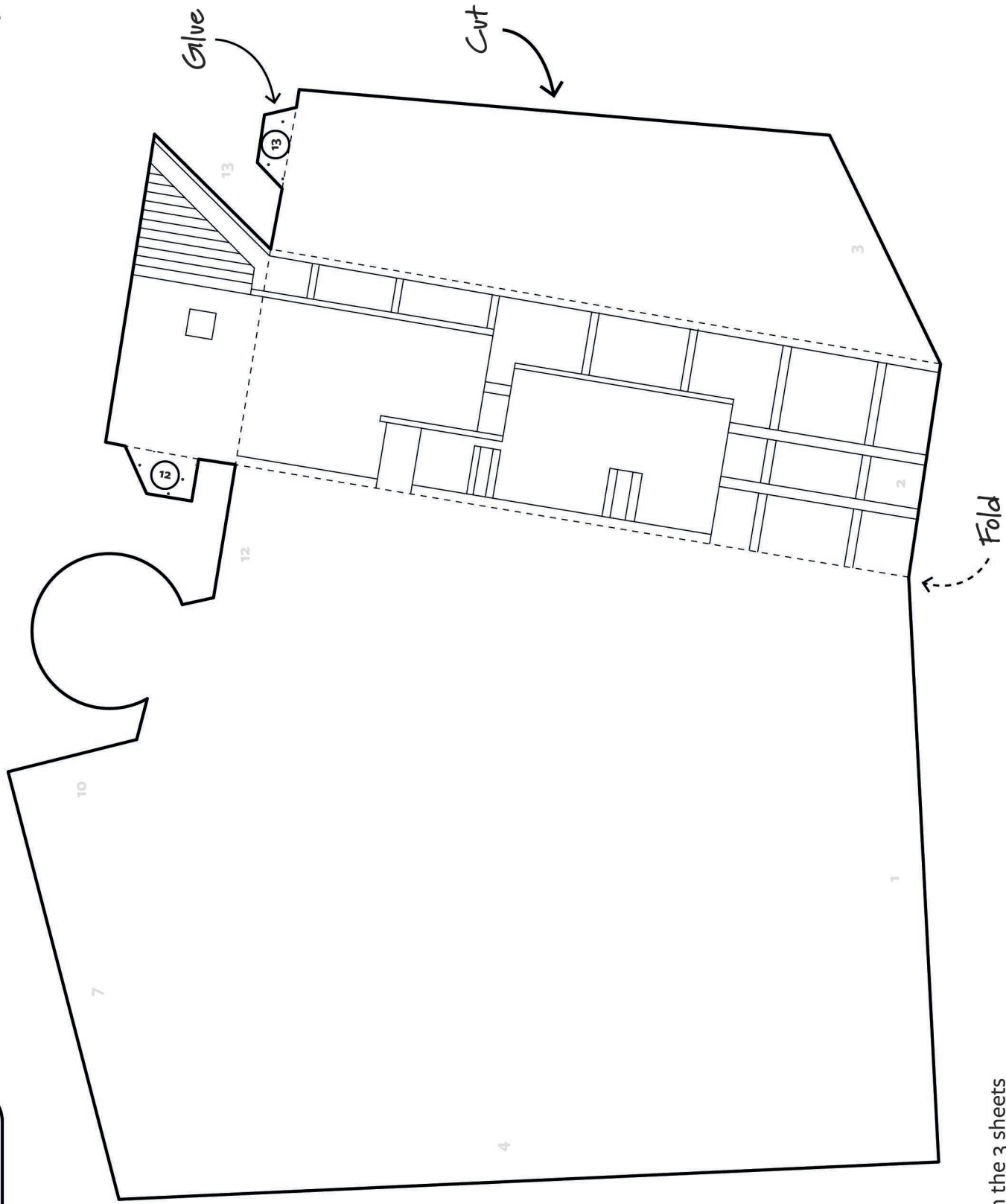
Cut • Fold • Build

An Lanntair

Sheet 1 of 3

Level: Difficult

This model is based on An Lanntair Arts Centre
Stornaway, Isle of Lewis



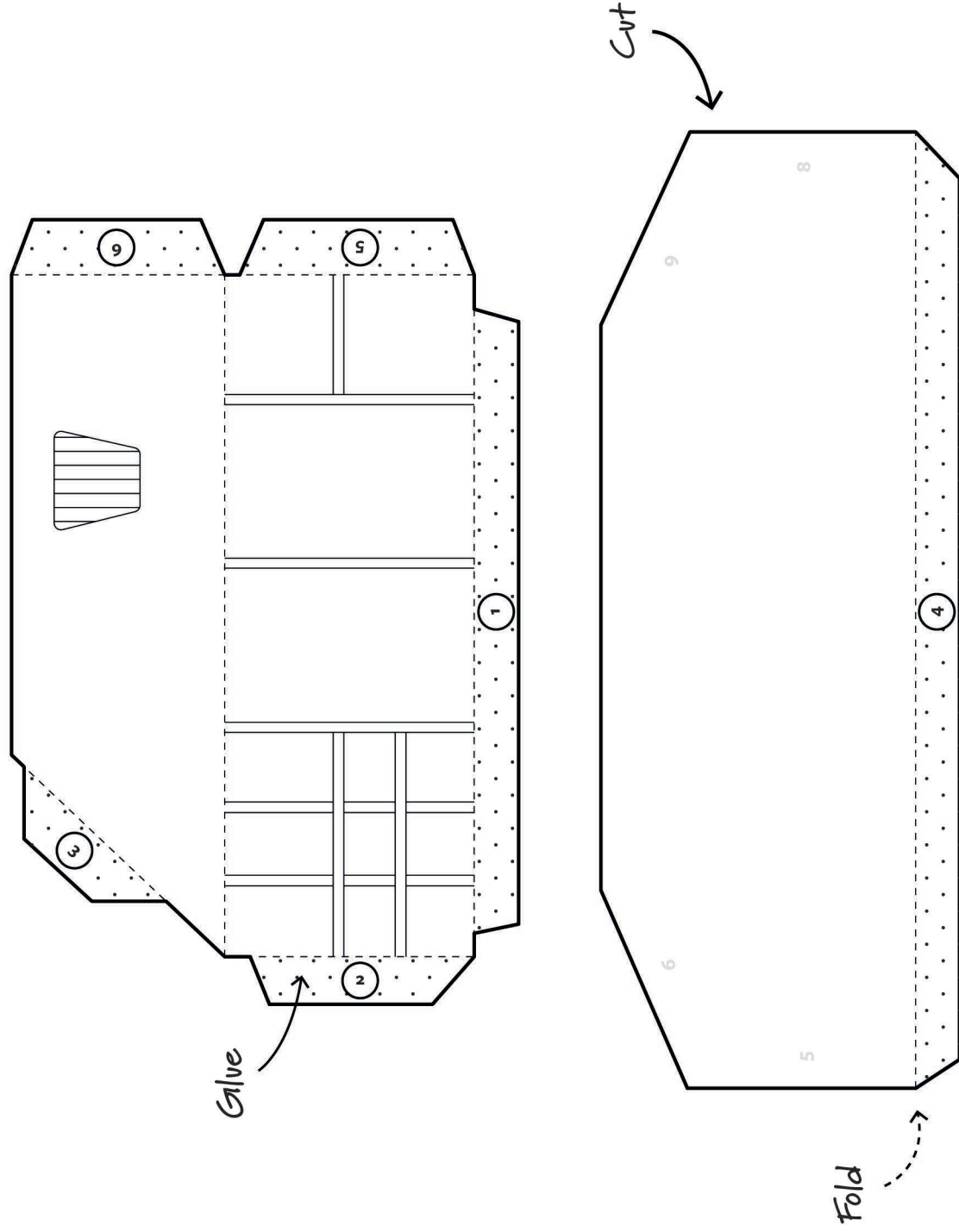
Follow the numbers on the 3 sheets
to glue your model together.

Scale 1:200

An Lanntair

Sheet 2 of 3

Level: Difficult



Follow the numbers on the 3 sheets
to glue your model together.

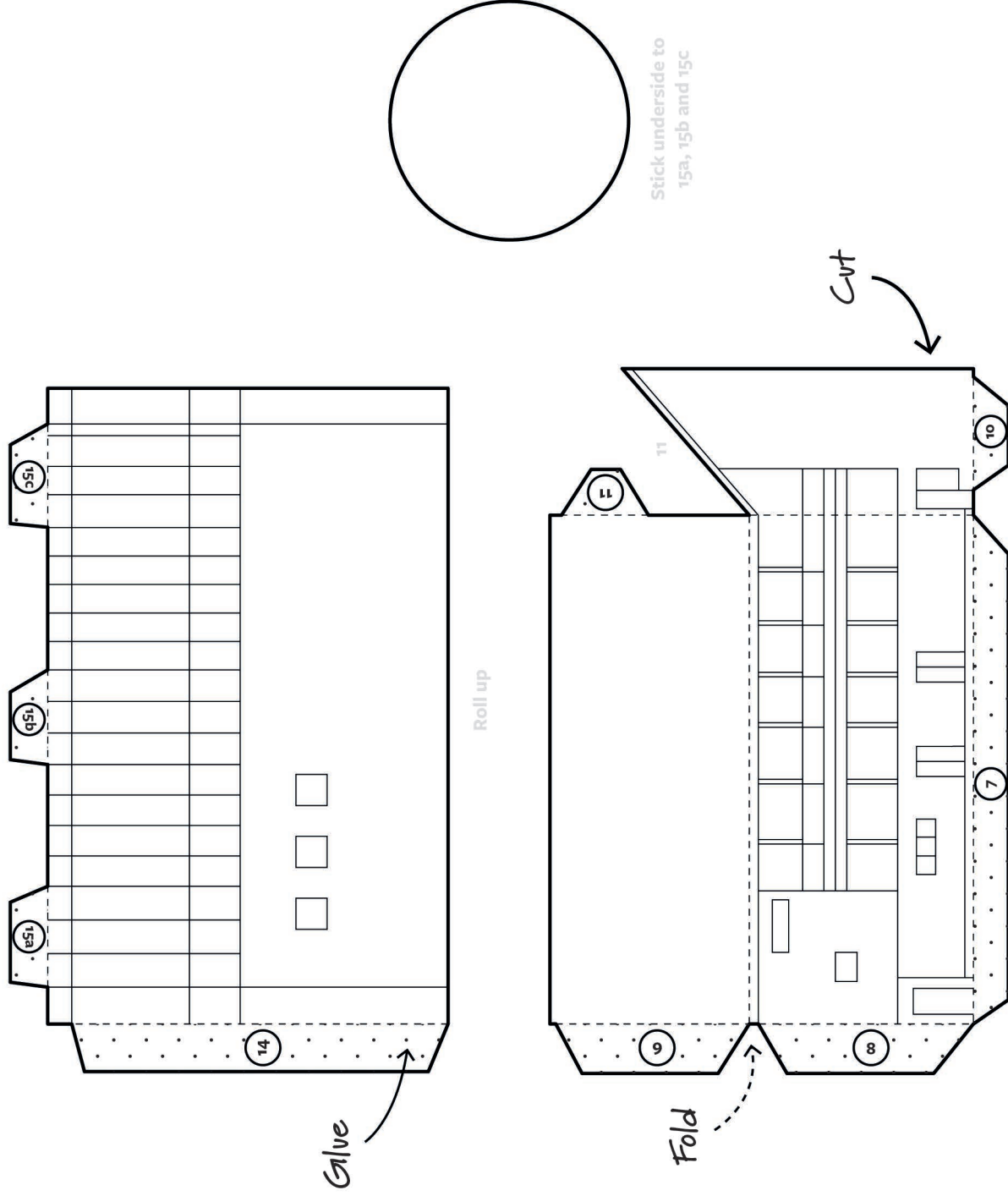
Cut • Fold • Build

An Lannntair

Sheet 3 of 3

Level: Difficult

This model is based on An Lanntair Arts Centre
Stornaway, Isle of Lewis



Follow the numbers on the 3 sheets
to glue your model together.

Scale 1:200

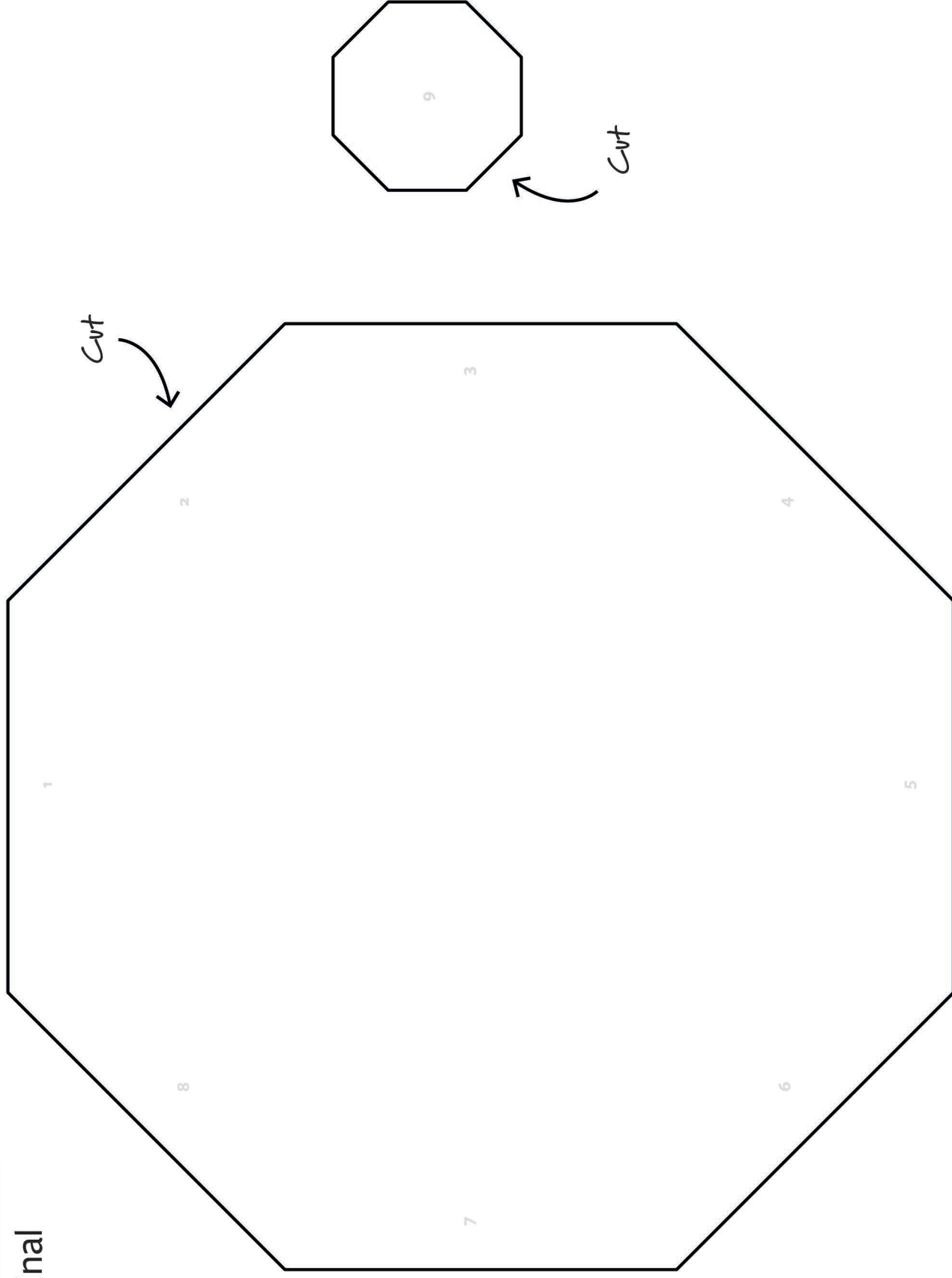
Cut • Fold • Build

Ferry Terminal

Sheet 1 of 3

Level: Difficult

This model is based on the ferry terminal at Stornoway
Isle of Lewis



Follow the numbers on the 3 sheets
to glue your model together.

Scale 1:200

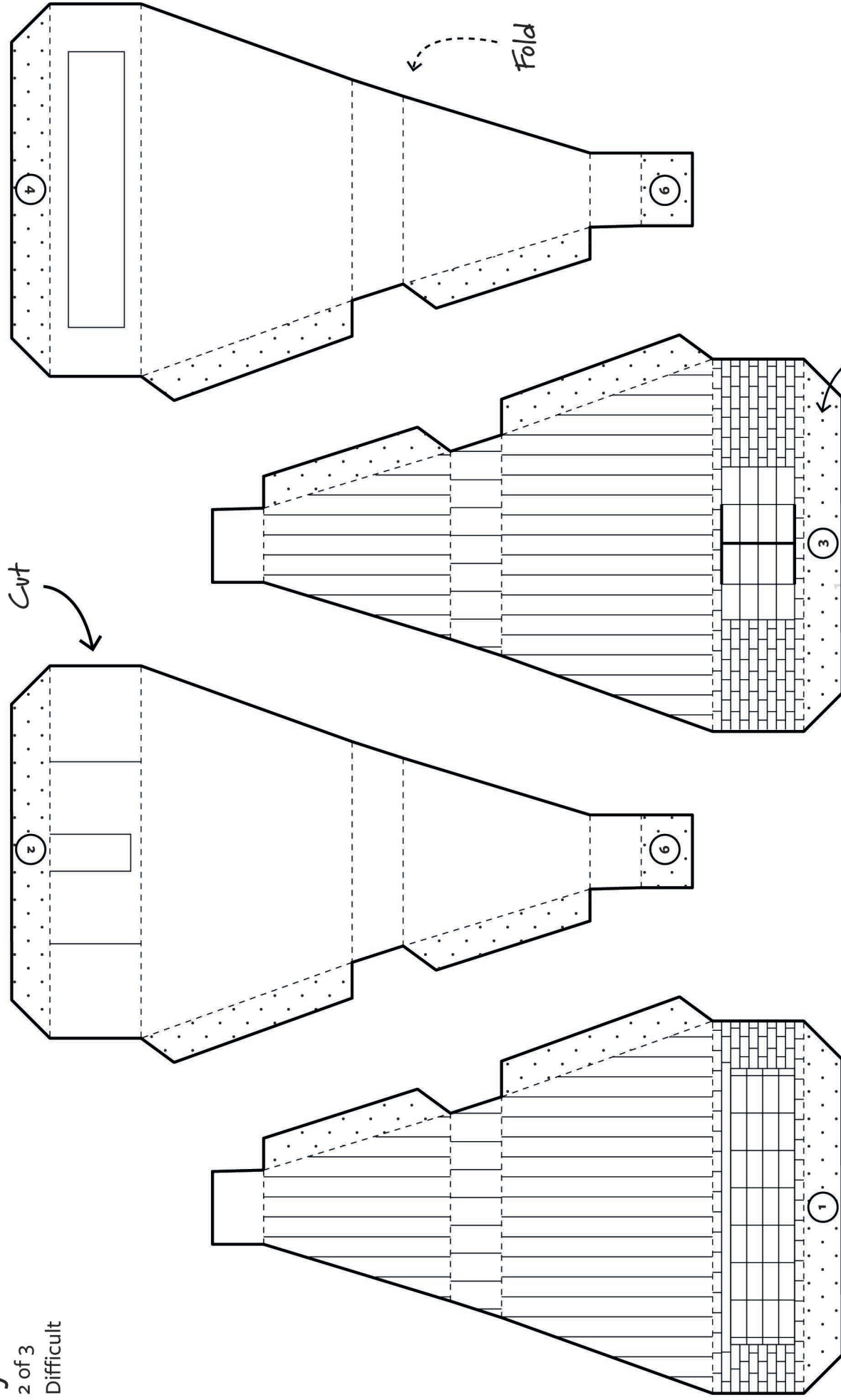
Cut • Fold • Build

Ferry Terminal

Sheet 2 of 3

Level: Difficult

This model is based on the ferry terminal at Stornoway
Isle of Lewis



Follow the numbers on the 3 sheets
to glue your model together.

Scale 1:200

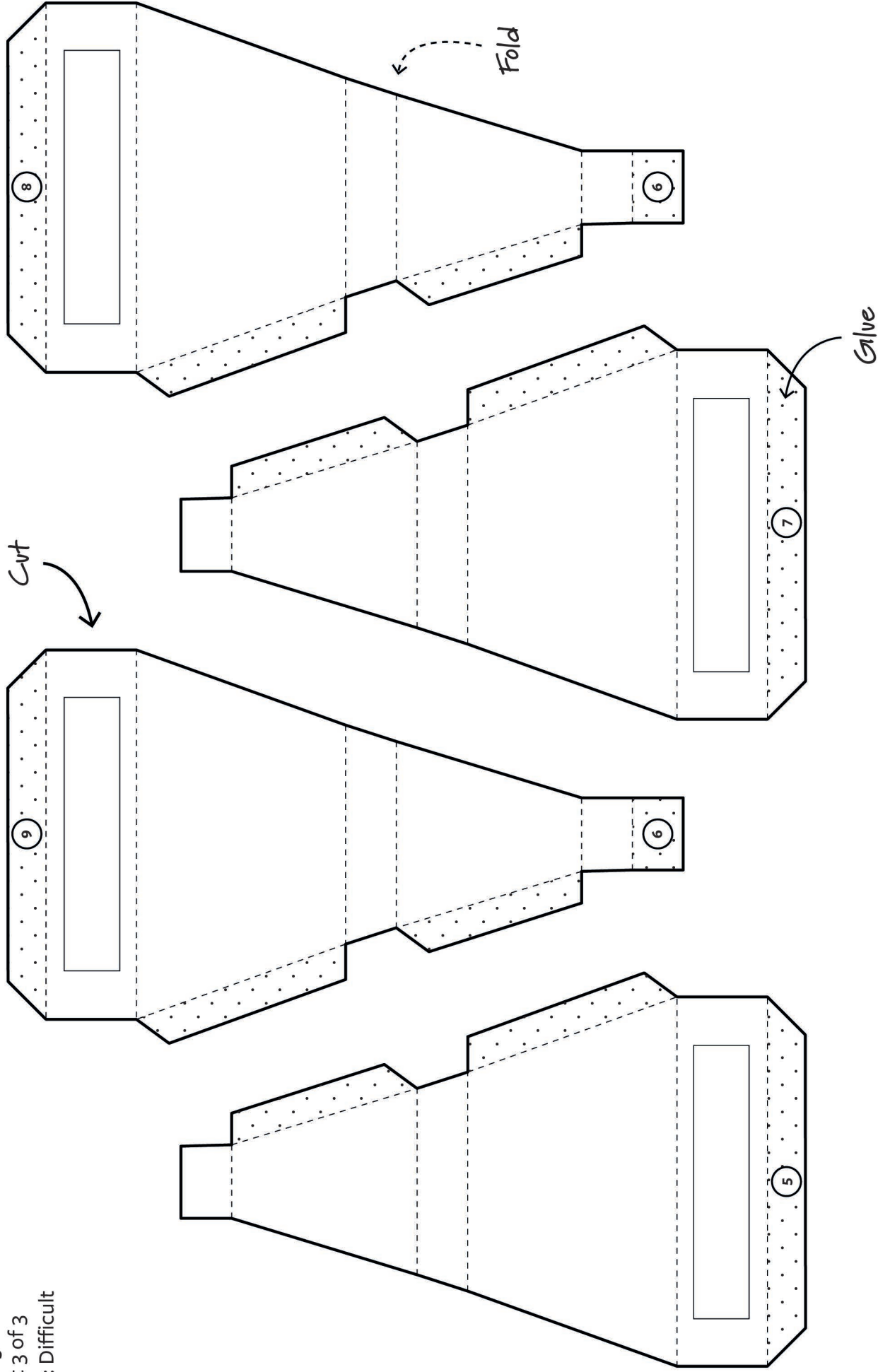
Cut • Fold • Build

Ferry Terminal

Sheet 3 of 3

Level: Difficult

This model is based on the ferry terminal at Stornoway
Isle of Lewis



Follow the numbers on the 3 sheets
to glue your model together.

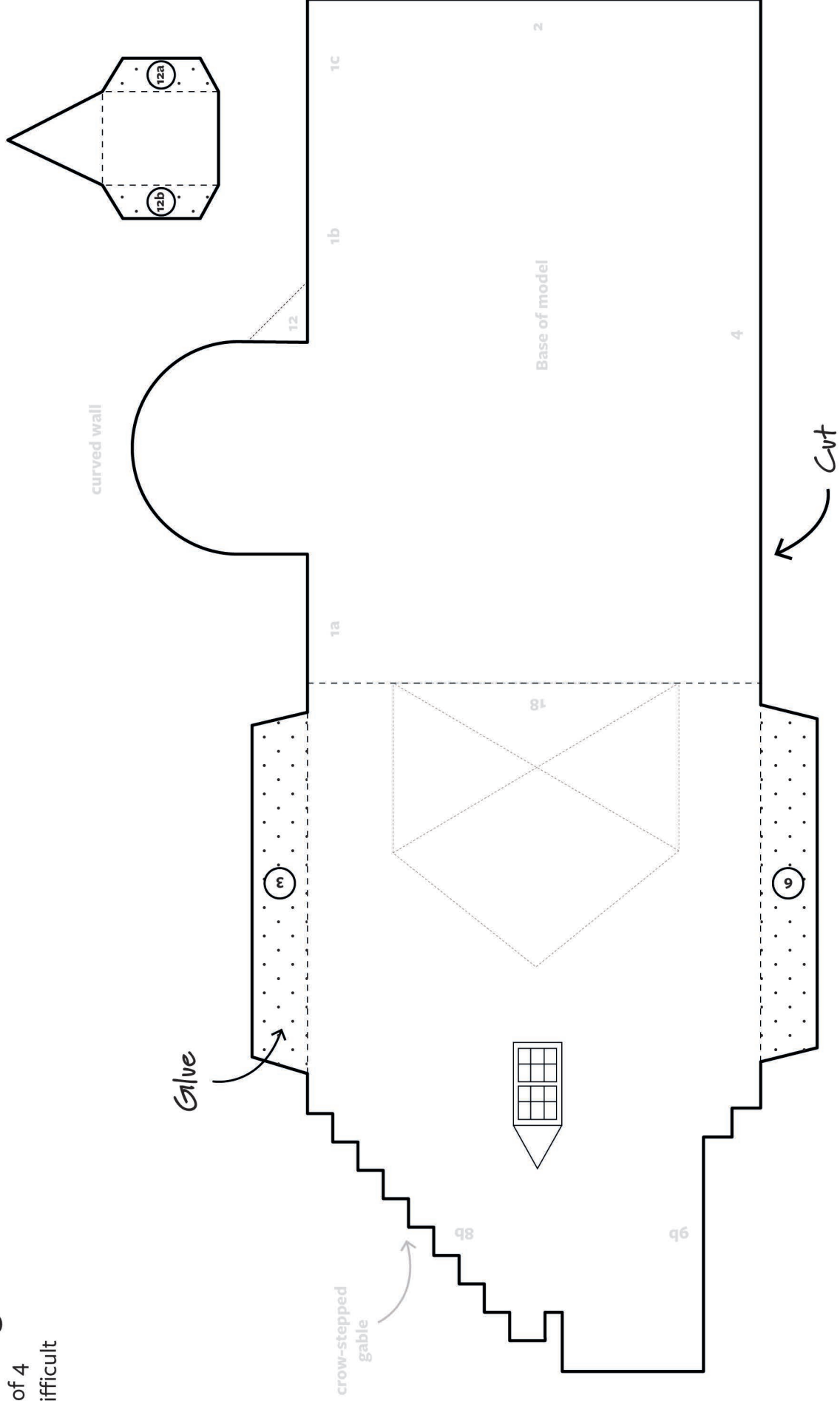
Scale 1:200

Gate Lodge

Sheet 2 of 4

Level: Difficult

This model is based on Rowallan Castle gate lodge
East Ayrshire



Follow the numbers on the 4 sheets
to glue your model together.

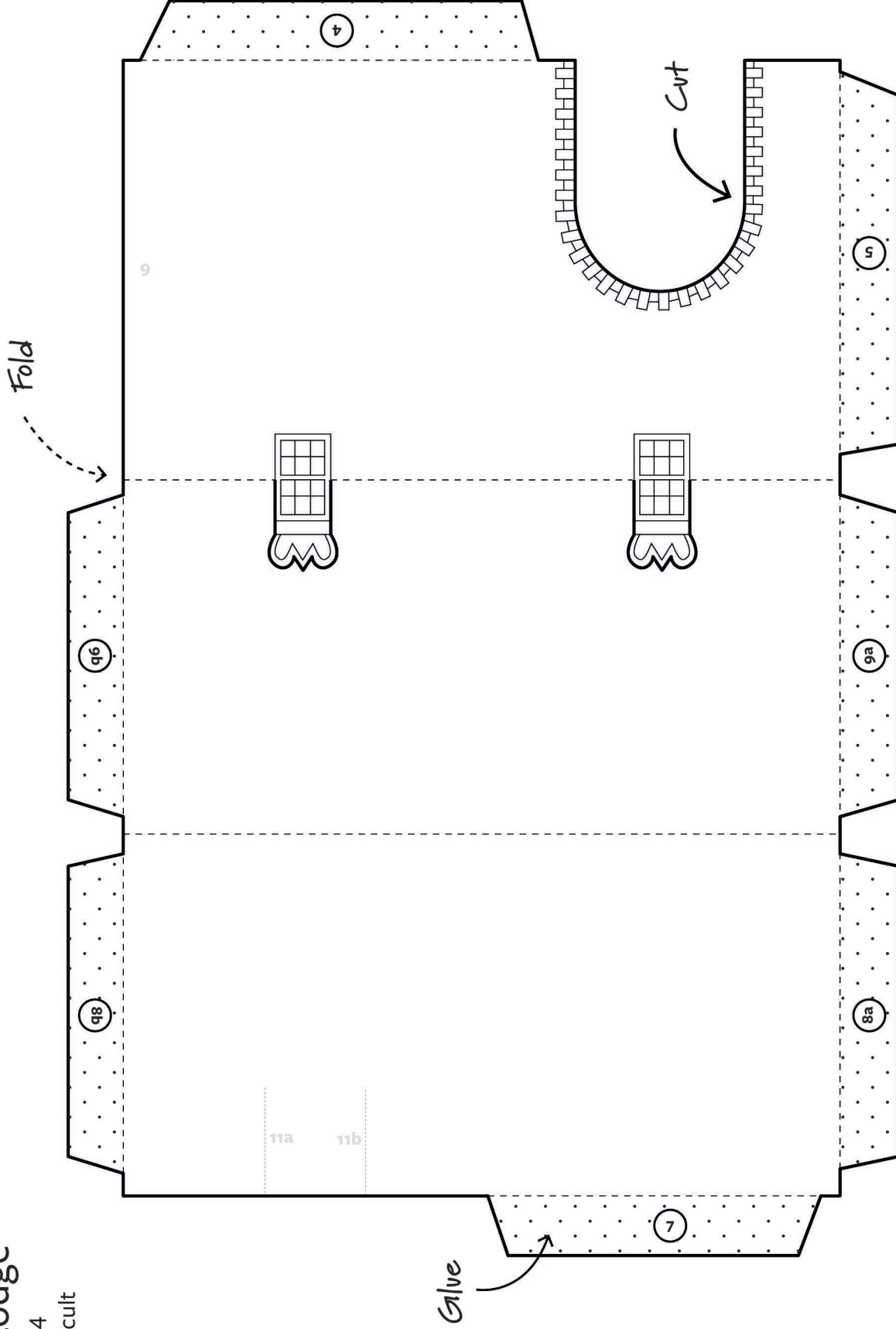
Cut • Fold • Build

This model is based on Rowallan Castle gate lodge
East Ayrshire

Gate Lodge

Sheet 3 of 4

Level: Difficult



Follow the numbers on the 4 sheets
to glue your model together.

Scale 1:200

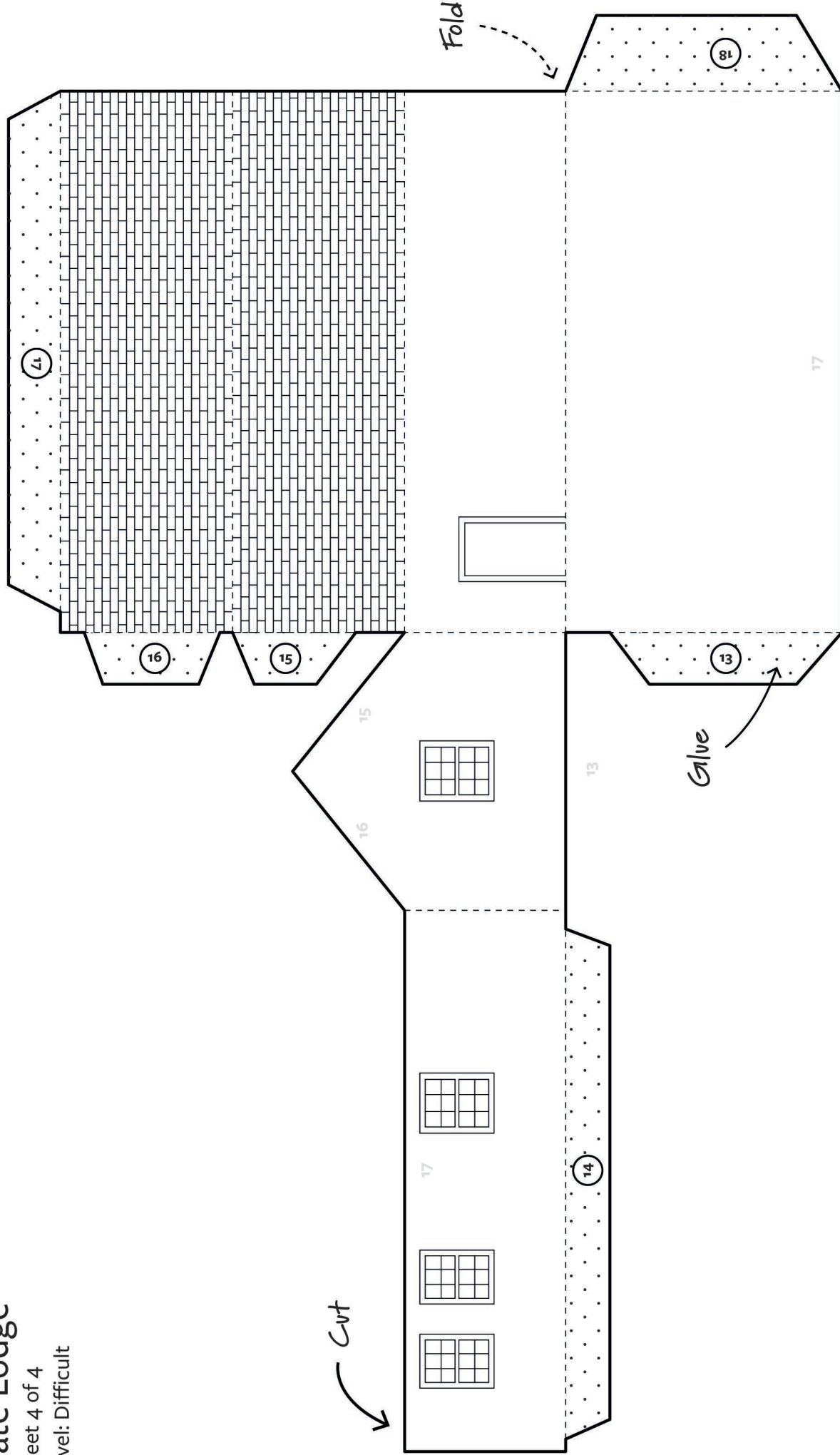
Cut • Fold • Build

Gate Lodge

Sheet 4 of 4

Level: Difficult

This model is based on Rowallan Castle gate lodge
East Ayrshire



Follow the numbers on the 4 sheets
to glue your model together.

Scale 1:200

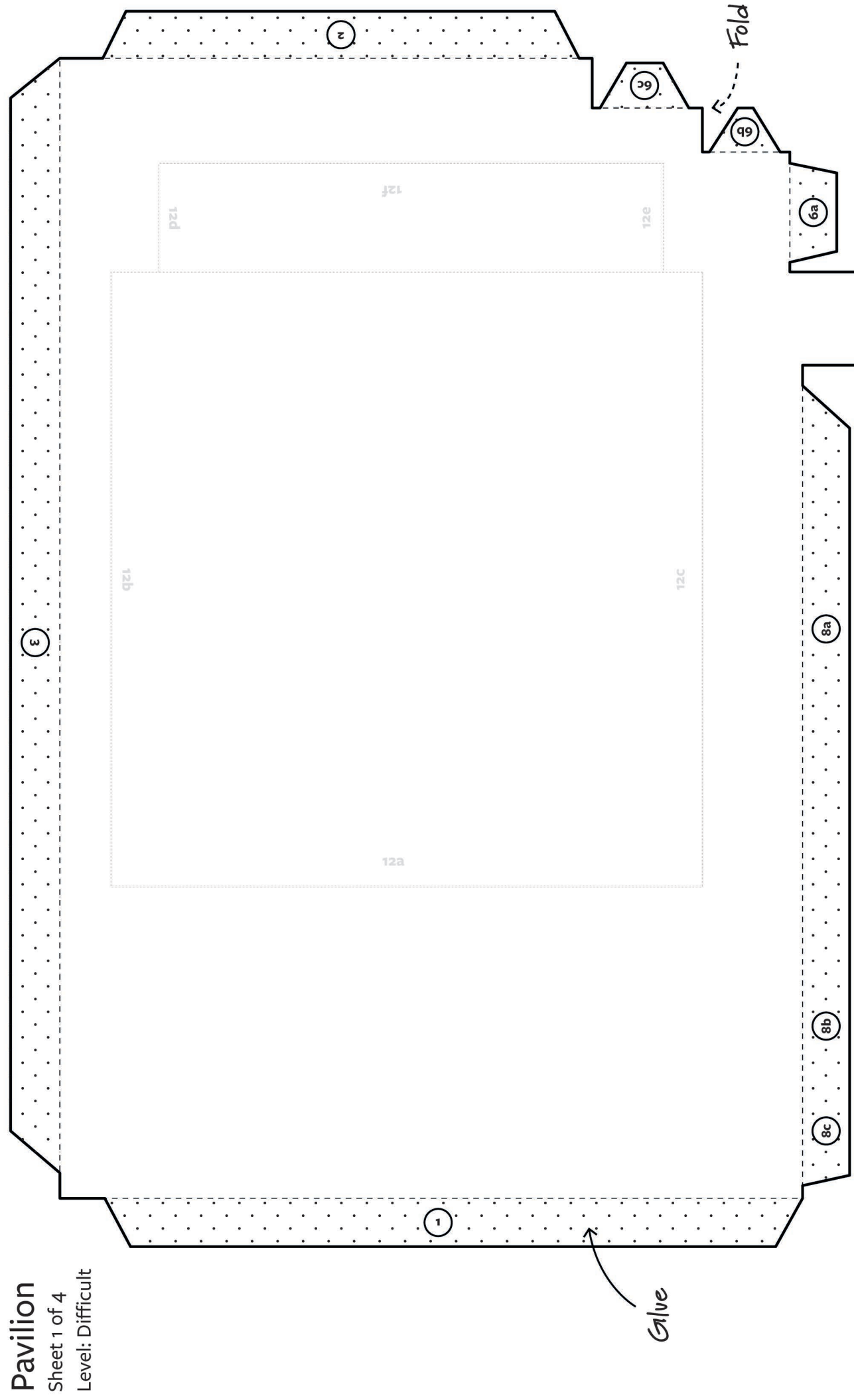
This model is based on Rothesay Pavilion
Isle of Bute

Cut • Fold • Build

Pavilion

Sheet 1 of 4

Level: Difficult



Follow the numbers on the 4 sheets
to glue your model together.

Scale 1:200

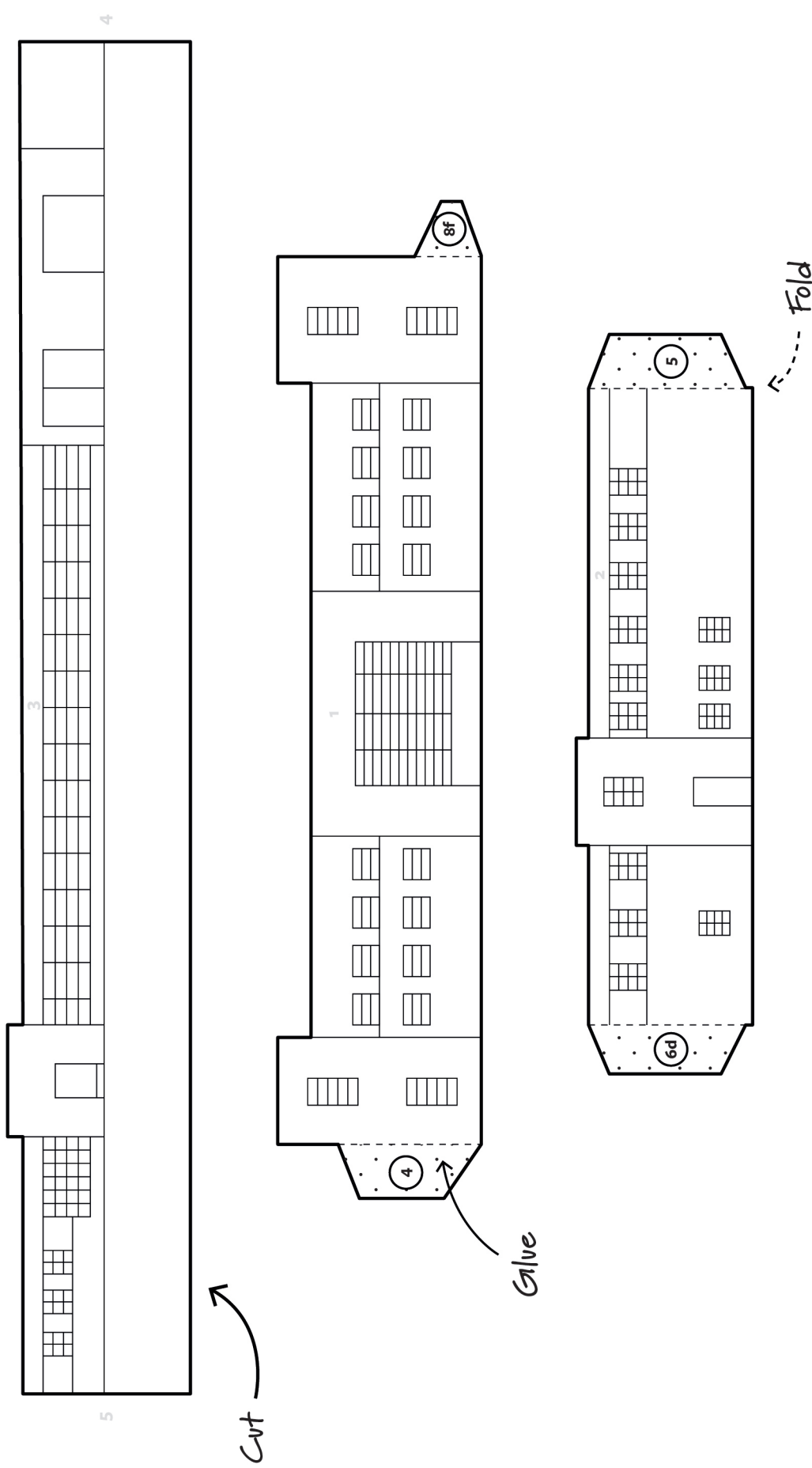
Cut • Fold • Build

This model is based on Rothesay Pavilion
Isle of Bute

Pavilion

Sheet 2 of 4

Level: Difficult



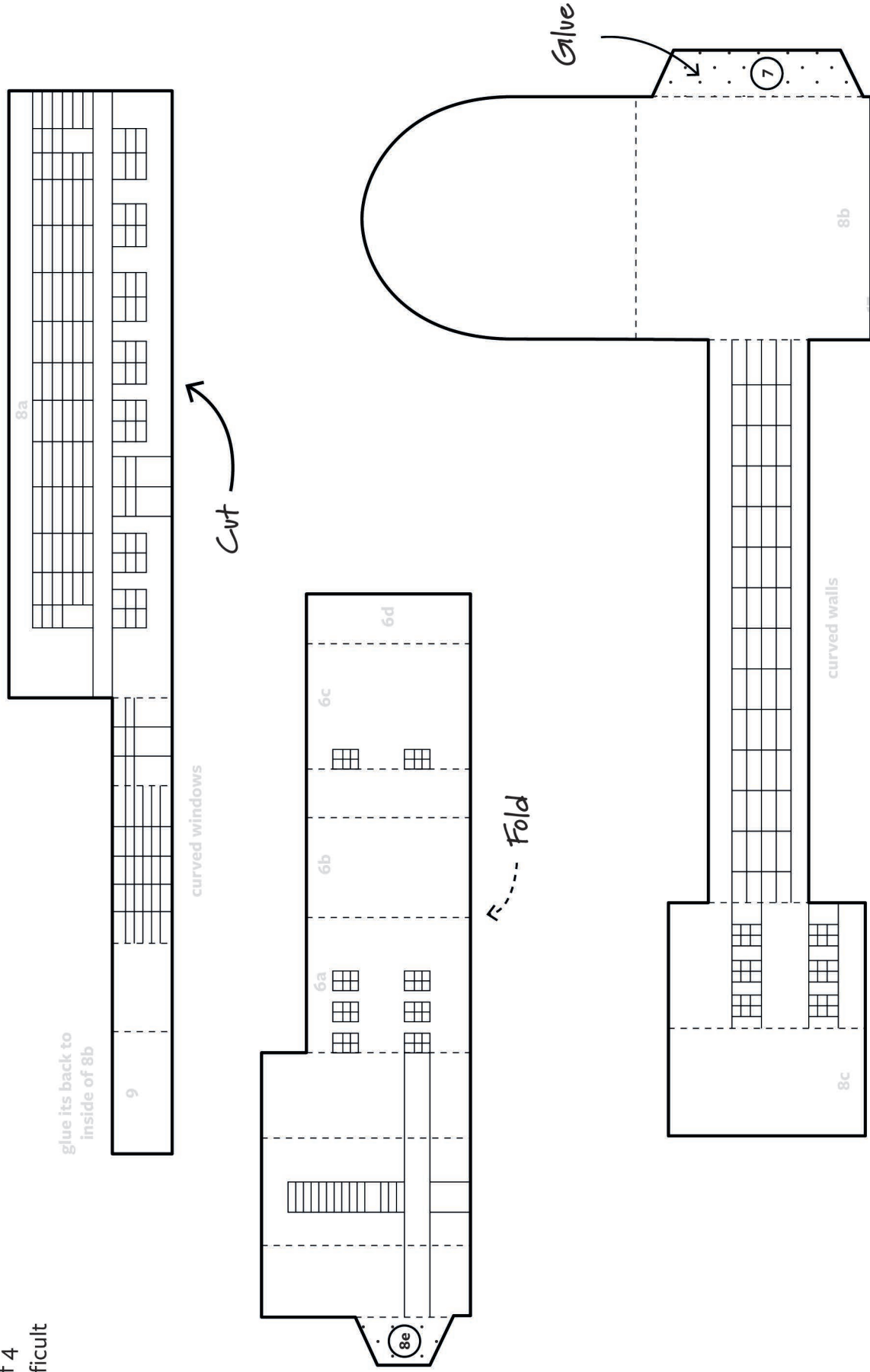
Follow the numbers on the 4 sheets
to glue your model together.

Scale 1:200

Pavilion

Sheet 3 of 4

Level: Difficult



Follow the numbers on the 4 sheets
to glue your model together.

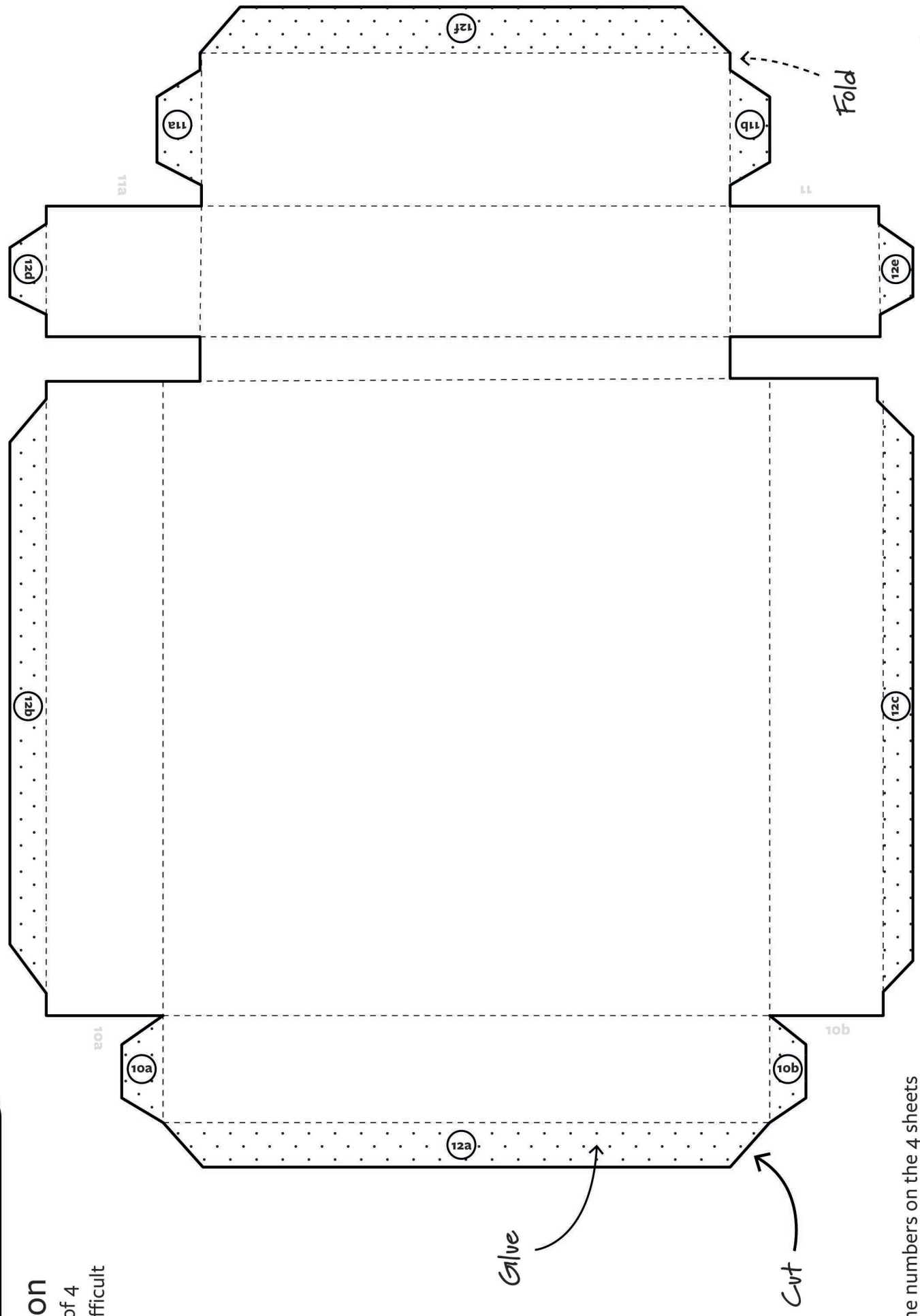
This model is based on Rothesay Pavilion
Isle of Bute

Cut • Fold • Build

Pavilion

Sheet 4 of 4

Level: Difficult



Follow the numbers on the 4 sheets
to glue your model together.


Scale 1:200

Scottish Civic Trust

 www.scottishcivictrust.org.uk

   @scotcivictrust

Doors Open Days

 www.doorsopendays.org.uk

 @dodscotland

 @doorsopendays

 @doorsopendaysscotland


Designed by Rachel Mayes

 www.designbymayes.com

 @designbymayes

Illustrated by Saffron Russell

 www.saffronrussell.co.uk

 @saffronrussellillustration