

**DOORS  
OPEN  
DAYS** 2025

**Aberdeenshire**   
COUNCIL

# Aberdeenshire DoorsOpenDays2025

Saturday 20th & Sunday 21st September

find out more online at

<https://www.doorsopendays.org.uk/regions/aberdeenshire>



Aberdeenshire Architecture Heritage Design



16 - Deer Parish Church



1 - 1 High Shore, Banff



18 - Fyvie Parish Church



26 - Garioch Heritage Centre



40 - Tod Head Lighthouse



44 - Braemar Castle



HISTORIC  
ENVIRONMENT  
SCOTLAND

ÀRAINNEACHD  
EACHDRAIDHEIL  
ALBA

**Aberdeenshire**  
COUNCIL



# Welcome to Doors Open Days **Aberdeenshire 2025**

This year's event will be held over two days, **Saturday 20th and Sunday 21st September 2025**, allowing visitors the best opportunity to visit a wide range of properties and experiences across the length and breadth of Aberdeenshire.

We have an exciting and varied programme with 57 properties taking part, some for the first time. There will also be tours, exhibitions, and refreshments at many of the venues, hosted by Doors Open Days volunteers.

Come along and join us in celebrating Aberdeenshire's rich heritage!

Doors Open Days is Scotland's largest free annual architectural event. It is coordinated nationally by the Scottish Civic Trust and forms part of European Heritage Days, a joint initiative of the Council of Europe and the European Union alongside Scottish Archaeology Month. Both events are supported by Historic Environment Scotland.

This year's Aberdeenshire event has been organised by Aberdeenshire Council's Historic Environment Team and coordinated by Clare Tierney.

Our gratitude and thanks go to all those who have generously agreed to open their buildings to make this event possible, and to all the volunteers who have given up their valuable time.

## OPENING TIMES

Please note that not all properties are open on both days. Please check the opening times of the properties you wish to visit before you travel. Openings may also be subject to unavoidable last-minute changes. For the most up to date information on the buildings taking part, please check the event's national website

<http://www.doorsopendays.org.uk/> or our Facebook page

 <https://www.facebook.com/AberdeenshireArchitectureHeritageDesign/>

With so many buildings to visit across Aberdeenshire on Doors Open weekend, there's something for everyone – what better excuse to explore the region!

**With so many buildings to visit across Aberdeenshire on Doors Open weekend, there's something for everyone – what better excuse to explore the region**



15 Aberdeenshire Farming Museum



28 Leslie Castle



9 Portsoy Boat Shed



30 Beannachar Camphill Community



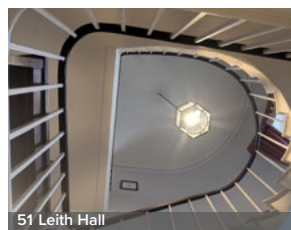
22 The National Decommissioning Centre



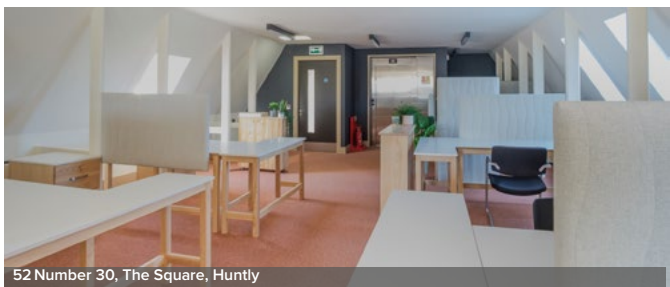
39 Stonehaven Open Air Pool



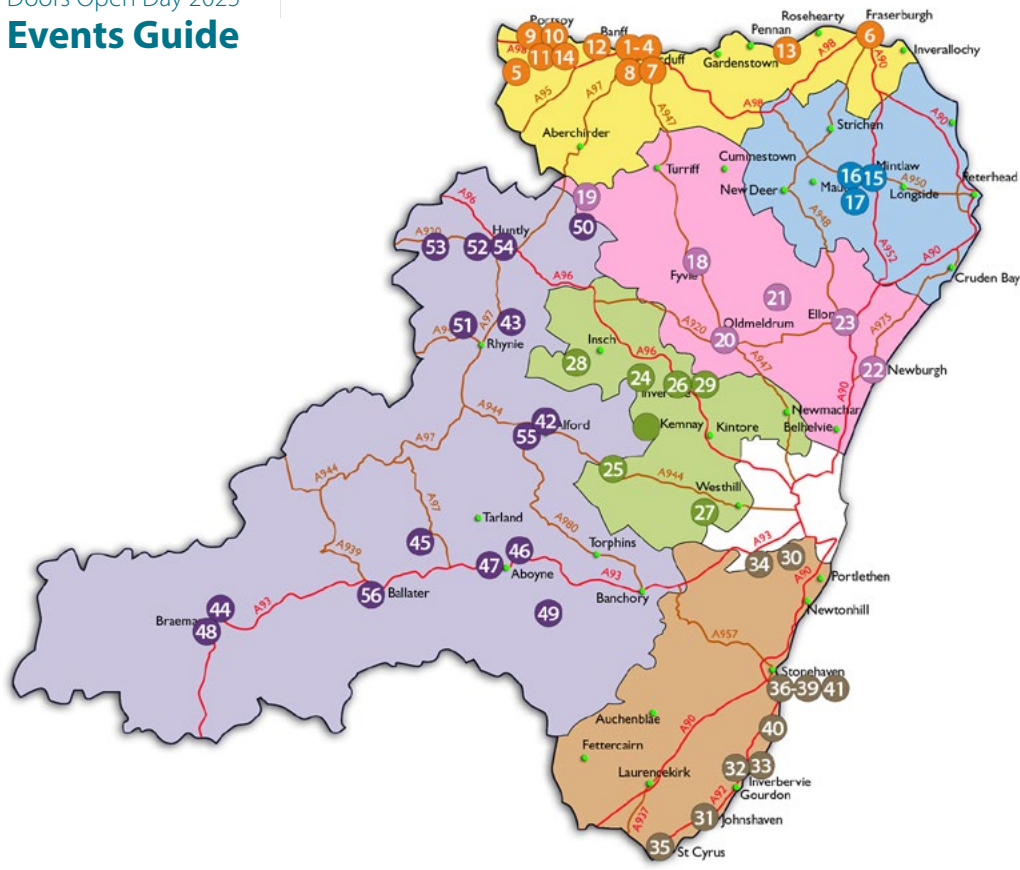
56 The Victoria and Albert Halls



51 Leith Hall



52 Number 30, The Square, Huntly



## KEY TO VENUE SYMBOLS



## Parking



## Hearing Loop



## Wheelchair Accessible Building



## Events for Children



## Toilets



## Not an Accessible Building



## Refreshments



### Wheelchair Accessible Toilet



### Limited Access

**Please note that visitors entering buildings do so at their own risk.**

Children must be accompanied by an adult. None of the participating buildings or organisations are responsible for any accidents or damage that might be incurred.

The owners/custodians of the buildings retain the right to refuse access.



# Venue Quick Links

## BANFF & BUCHAN AREA

- 1 1 High Shore, Banff (Merchant's House)
- 2 Banff Castle Community Centre & Ancient Monument
- 3 Banff Parish Church
- 4 Duff House Mausoleum
- 5 Fordyce Joiner's Workshop & Museum
- 6 Kinnaird Head Castle and Lighthouse and the Museum of Scottish Lighthouses
- 7 Macduff Parish Church
- 8 Museum of Banff
- 9 Portsoy Boat Shed
- 10 Portsoy Sail Loft
- 11 Portsoy Salmon Bothy
- 12 St. Brandan's Church, Inverboyndie, Banff
- 13 St. Drostan's Church, Aberdour
- 14 The Granary, Portsoy

## BUCHAN AREA

- 15 Aberdeenshire Farming Museum, Aden Country Park
- 16 Deer Parish Church
- 17 The Old Manse, Stuartfield

## FORMARTINE AREA

- 18 Fyvie Parish Church
- 19 Inverkeithny Church
- 20 Live Life Aberdeenshire Libraries
- 21 Tarves Heritage Centre
- 22 The National Decommissioning Centre
- 23 Ythan Lodge of Freemasons

## GARIOCH AREA

- 24 Bennachie Visitor Centre
- 25 Elyza Fraser Mausoleum
- 26 Garioch Heritage Centre
- 27 Garlogie Mill Beam Engine and Turbine House
- 28 Leslie Castle
- 29 The Lodge of St Anthony, Inverurie

\*Addition\* Kemnay Village Hall

## KINCARDINE & MEARN'S AREA

- 30 Beannachar Camphill Community
- 31 Benholm and Johnshaven Heritage Museum
- 32 Bervie Brow Research Station
- 33 Hallgreen Castle
- 34 Maryculter Trinity Church of Scotland
- 35 St Cyrus National Nature Reserve
- 36 St James Episcopal Church, Stonehaven
- 37 Stonehaven Clock Tower
- 38 Stonehaven Lifeboat Station
- 39 Stonehaven Open Air Pool
- 40 Tod Head Lighthouse
- 41 Tolbooth Museum

## MARR AREA

- 42 Alford Valley Community Railway
- 43 Books Abroad, Rhynie
- 44 Braemar Castle
- 45 Cairngorm Bothies
- 46 Coull Kirk
- 47 Deeside Gliding Club, Aboyne
- 48 Downie's Cottage, Braemar
- 49 Finzean Bucket Mill
- 50 Fergie Old Kirk
- 51 Leith Hall
- 52 Number 30, The Square, Huntly
- 53 St Andrew's Church, Glass
- 54 St Margaret's Church, Huntly
- 55 Grampian Transport Museum,
- 56 The Victoria and Albert Halls, Ballater

Our gratitude and thanks go to all those who have generously agreed to open their buildings to make this event possible and to the volunteers who have given up their time.

# BANFF & BUCHAN

## 1 1 High Shore, Banff (Merchant's House)

1 High Shore, Banff, AB45 1DB



### Opening Times:

Saturday 20th 10am - 4pm

Sunday 21st 10am - 4pm

1 High Shore is an original Merchant's house in the centre of Banff, adjacent to the Silversmith's House and the Market Arms; they are three of the oldest houses in Banff, forming a rare historic grouping. The Market Arms Pub & Restaurant (dated 1585) is the oldest continuously open pub in Scotland! Opposite lies a medieval churchyard.

Merchant's House, category A listed, continues its life as a private family home engulfed with history and architectural detail. Probably dating from before 1675, as dated on the outside, with fortified ground floor and evidence of entry at first floor level.

Each of the three floors offer architectural delights, including a huge fireplace, spiral stone stairs, turret and a collection of Aberdeenshire slipware (functional pottery). The courtyard



garden offers fascinating nooks and crannies, interesting plaster reliefs and a fine view of the rear of the staircase tower. Over the weekend the family will be on hand and delighted to answer questions and provide guided access to the attic for the able-bodied, to see the numbered beams, cap room and views across the bay.

Only open to the public on Doors Open Days, the event provides an extraordinarily unique opportunity to glimpse into the history of Banff.



## NEW IN 2025

### 2 Banff Castle Community Centre & Ancient Monument

Castle Street, Banff, AB45 1DL



#### Opening Times:

Saturday 20th 10am - 3pm

Sunday 21st 11am - 3pm

Banff castle, originally a medieval royal castle, was first mentioned in historical records of the 12th century. The early structure served as a defensive stronghold and royal residence. Over the centuries, the original castle fell into ruin, and little of it remains today.

In the 18th century, the site was reborn with the construction of a Georgian mansion, built around 1750 by the distinguished architect John Adam. While it carries the name Banff Castle, the current building is not a medieval castle in

form, but a grand residence defined by Georgian elegance, symmetrical, balanced, and beautifully proportioned.

Originally built for royal and defensive duties, its strategic importance was paramount in the 12th century. By the 18th century, the site took on a refined, domestic role, a striking shift in architectural and social meaning. The repurposing of the mansion as a community arts centre is such a thoughtful way to preserve the building. It keeps the legacy alive by breathing modern relevance into it through music, exhibitions, and workshops. The gardens and parkland not only provide scenic beauty but help anchor the site within the town's community, blending history with everyday life.

A first time for Banff Castle to Doors Open Days, please make them feel welcome

 [banffcastle.com](https://banffcastle.com)









### 3 Banff Parish Church

High Street, Banff, AB45 1AE



#### Opening Times:

Saturday 20th 10am - 4pm  
Sunday 21st 1pm - 4pm  
(open for worship 11am-12pm)

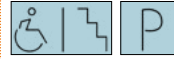
Banff Parish Church originates from 1789 and was designed by Andrew Wilson architect and builder. The iconic spire that can be seen in the landscape was added by William Robertson in 1849. The spire stands majestically on top of a tower constructed in tooled and polished ashlar. The chancel was later added and the interior altered in 1929. A small chapel was created at the rear of the church in 1994. The pulpit, font, communion table and stained glass in the chancel were all gifted in 1929. Take a moment out of your busy Doors Open Days adventure to stop and contemplate within the walls of this magnificent category B listed church in the heart of Banff where church Members will be on hand to give you an insight into the history of the church, with some fascinating historic photos.

 [banffparishchurchofscotland.co.uk](http://banffparishchurchofscotland.co.uk)

 [Banff Parish Church of Scotland](https://www.facebook.com/BanffParishChurchofScotland)

### 4 Duff House Mausoleum

Wrack Woods (1 mile south of Duff House),  
Banff, AB45 3SX



#### Opening Times:

Saturday 20th CLOSED  
Sunday 21st 10.30am - 3.30pm

Built on the site of a Carmelite burial ground this "Gothick" structure houses the remains of the first five Earls Fife amongst others. Outside is a tomb that used to be in Banff cemetery and falsely used by the 2nd Earl to claim a family connection to Robert the Bruce. The Mausoleum is in an extremely peaceful and picturesque location above the River Deveron - so much so it has been used for weddings - but also contains several excellent examples of quite early Coade stone. Subject to weather and good fitness of visitors, directions can be given to find the other nearby points of historical and cultural interest of Mount Carmel, Hospital Island and St Mary's "Well".

Available at the Mausoleum will be leaflets with a map showing walks around Wrack Woods highlighting key features. A separate leaflet with the history of the Mausoleum will also be



available, to supplement the information the stewards on the day get a chance to talk about Duff House (Historic Environment Scotland), a most magnificent fully furnished Georgian country house, will be open 10am to 12.30pm, & 1.15pm to 4.30pm with an exhibition of how our local Polish community arrived just at the end of the war.

Main parking is near Duff House; most visitors are asked to walk to the Mausoleum (about a mile, which will be signed), either along a track or the lower footpath. This is a most pleasant walk, especially now much work has been done to the woods.

There are two spaces next to the Mausoleum for disabled parking only. The Mausoleum is fully wheelchair accessible outside. To get to the flat floor inside there are 4 steps.

 [friendsofduffhouse.org.uk](http://friendsofduffhouse.org.uk)

 [friends of duff house](https://www.facebook.com/friendsofduffhouse)

Short video can be watched at:

 <https://youtu.be/9koNx6v5Z6A>



## NEW IN 2025

### 5 Fordyce Joiner's Workshop & Museum Church Street, Fordyce, AB45 2SL



#### Opening Times:

Saturday 20th 10am - 4pm

Sunday 21st 10am - 4pm

When the premises of Davie Hay, carpenter, was to be offered for sale in 1990 along with its extensive collection of tools, a project was conceived by the former Banff and Buchan District Council to develop the "Fordyce Joiners Workshop & Museum".

The visitor facility, with engagement from the local community and various grant funding bodies was completed and open to the public in the spring of 1993.



The "workshop" comprises three elements of interest, museum displaying the tool collection, a garden and a workshop where for some thirteen years Tim Horborough, harp maker and sculptor, hosted and led woodworking and stone carving courses. Although the facility is owned by Aberdeenshire Council the local Community Association has held a lease to the workshop for over 20 years.

Nestled in the heart of Fordyce, the Joiners Workshop and Museum offers visitors a fascinating glimpse into the village's rich craftsmanship heritage. This small yet captivating museum is next door to the traditional stone

building that once served as a working joiner's workshop. Step inside both, and you'll discover traditional tools, machinery, and woodworking artefacts that tell the story of a trade that was once vital to rural communities. The museum showcases the skill and ingenuity of local craftsmen who created everything from furniture to agricultural items, helping to shape the character of Fordyce and the surrounding area.

Visitors can marvel at the traditional hand tools and learn about the meticulous techniques passed down through generations. A visit to the Fordyce Joiners Workshop and Museum is more than just a step back in time—it's a celebration of the craftsmanship and industrious spirit that define this charming village. Local history materials are also available to view. The museum is manned by volunteer residents, and the adjoining Victorian garden is also tended by volunteers.

 [fordycevillage.co.uk](http://fordycevillage.co.uk)



## 6 Kinnaird Head Castle and Lighthouse and the Museum of Scottish Lighthouses

Museum of Scottish Lighthouses, Kinnaird Head, Stevenson Road, Fraserburgh, AB43 9DU



### Opening Times:

Saturday 20th CLOSED

Sunday 21st 10am - 4pm

Come and Visit Kinnaird Head Castle and Lighthouse, the very first lighthouse on mainland Scotland (1787), and visit our purpose-built museum which sits alongside. The museum tells the great story of the Northern Lighthouse Board, the engineers who built the lights and the keepers who tended them. It is a story of skill, courage, technical genius and brilliant organisation.

Both The 'Museum of Scottish Lighthouses' and 'Kinnaird Head Castle and Lighthouse' will be free to Visit on Doors Open Day, an opportunity not to be missed.

Tickets to partake in a tour of the lighthouse will be available for collection in the museum building. Visitors are advised to park their vehicles in the museum car park while they attend both venues

 [lighthousemuseum.org.uk](http://lighthousemuseum.org.uk)





## 7 Macduff Parish Church

Church Street, Macduff, AB44 1UN



### Opening Times:

Saturday 20th 10am - 4pm

Sunday 21st 10am - 4pm

(open for worship 11am-12pm)

The parish church occupies a prominent position in the community of Macduff. On a hill overlooking the harbour, the building was opened in 1805. With its Italianate square tower, domed roof and cupola added in 1865, it is a landmark for boats approaching the town. Points of architectural interest include the stained-glass windows installed in 1922 to the memory of local people who died in World War 1. These were created by the City Glass Company of Glasgow and displayed at the Royal Academy in London. More recently stained-glass windows by the artist Jennifer-Jane Bayliss, were added to the vestibule to commemorate the links with Malawi. The organ was built in 1903.

The building has been continually updated and renovated to meet the needs of an active congregation. On Sunday, visitors in the morning



will be able to attend the regular service of worship that starts at 11am.

The graveyard surrounding the church is also worth a visit with many interesting gravestones as well as several Commonwealth Commission Graves.

Over the weekend guides will be available to talk about the church building and the work of the congregation.

 [macduffparishchurch.org.uk](http://macduffparishchurch.org.uk)



## 8 Museum of Banff

High Street, Banff, AB45 1AE



### Opening Times:

Saturday 20th 10.30am - 4pm

Sunday 21st 1pm - 4pm

Founded in 1828 as “The Museum of The Banff Institution”, this is the oldest museum in Scotland north of Perth. The Banff Institution was then dissolved in 1875 and the collections passed to Banff Town Council.

The present museum and library building were built in 1902. Banff Preservation and Heritage Society currently run the Museum in partnership with Aberdeenshire Museums Service.

The exhibits show a vast range of interesting artefacts from the Celtic period up to the modern day. They reflect life in Banffshire and show some stunning examples of our historical past in Banff and Macduff. There is also a varied collection of Banff Silver.

This year Banff Preservation and Heritage Society is celebrating its 60th anniversary, 60 years of saving the built heritage of Banff. The Summer



exhibition in the museum celebrates the many projects carried out by the Society and looks back into the history of the Banff Preservation Society, saving the town's very rich built heritage and looking to the future, continuing our work to save the built heritage and history of the town. The first floor can be accessed by lift.

 [bphsmob.org.uk](http://bphsmob.org.uk)

 [Banff Preservation and Heritage Society and Museum of Banff](#)



## 9 Portsoy Boat Shed

90 Church Street, Portsoy, AB45 2QR



### Opening Times:

Saturday 20th CLOSED

Sunday 21st 12noon - 4pm

In the late 1800s Portsoy had several active boat builders and sail making in the Sail Loft on the Back Green. In 2004, the Boat Festival Trust began its policy of working with children to teach and revive basic principles of wooden boat building. Through outreach projects coordinated by the Boat Festival Trust, children have created over 60 dinghies and several small boats called Curragh's and a North Sea Faering and a St Ayles Skiff. It was subsequently identified that a permanent premises was essential to the continued teaching of boat crafting skills and Portsoy Maritime

Heritage gifted derelict buildings on the Old Harbour to Portsoy Community Enterprise, who thanks to funding of half a million pounds, transformed the building into the Boatshed.

The Boatshed, built upon the ruins of a former boatshed/store, was fully renovated and opened in 2015. It is now home to a qualified boatbuilder and group of enthusiastic boatbuilding volunteers who use the purposely designed workshop space, equipped with tools, for community boatbuilding projects and school boatbuilding sessions, ensuring the skills of traditional boatbuilding remain active.

You will find a friendly welcome and a hearty chat as the team share their skills, knowledge and learning. Come along and see them at work.

 [portsoyboatshed.org](http://portsoyboatshed.org)

 [Portsoy Boatshed](https://www.facebook.com/PortsoyBoatshed)

 [Portsoy Boatshed](https://www.instagram.com/PortsoyBoatshed)





## NEW IN 2025

### 10 Portsoy Sail Loft

Back Green, Portsoy, AB45 2AF



#### Opening Times:

Saturday 20th 10am - 4pm

Sunday 21st 10am - 4pm

Dating back to the 1700s, the Sail Loft buildings are listed as Category B (of regional importance) by Historic Environment Scotland. They comprise of a former Sail making loft, a finely detailed Georgian house and two associated cottages.

Where the bunkhouse is located is known as Back Green and was used for the manufacture of thread for flax. In the early 1800s the site contained two groups of buildings – one operated as a rope making business, while the manufacture of sails took place in the other. Sadly, the rope works fell into decline, but the former sail making factory, houses and cottages survived.



In 2006, the buildings were restored in a £2million project and the Sail Loft is now a self-catering accommodation facility offering 25 luxurious beds and bunks, with a modern open plan communal kitchen, dining area and lounge, drying room, secure cycle storage and an outdoor hot tub.

The Sail Loft serves as a powerful symbol of local and national histories, cultural identity, and collective memory.

On the day volunteers will be on the scene to provide background information and tours of the building and its operation.

 [portsoysailloft.org](https://portsoysailloft.org)

 [portsoy.sailloft](https://portsoy.sailloft)

 [portsoy.sailloft](https://portsoy.sailloft)



## 11 Portsoy Salmon Bothy

Links Road, Portsoy, AB45 2SS



### Opening Times:

Saturday 20th 10am - 4pm

Sunday 21st 10am - 4pm

A former working Salmon House, the Salmon Bothy dates to 1834 and was purpose built by Seafeld Estate who owned the salmon fishing rights along the coast. The building comprised of an office, a bothy, icehouse and fish preparation area, workshop and storage accommodation. The salmon bothy was in operation until 1990 then salmon netting ceased at the Portsoy station, and the building was left unused until 2006 when Portsoy Community Enterprise took it over.

The bothy has been lovingly restored and reopened in 2008 as a museum and community venue with artefacts, displays and exhibits telling the story of Portsoy's harbours, industries and trade.

The Salmon Bothy recognises the importance of preserving both the physical buildings and the skills used to construct them. It provides an insight into what life was like many years ago when Portsoy was a busy fishing port, the building has been preserved and artefacts on display tell its story.



Over the event guided tours will be taking place.

 [salmonbothy.org](http://salmonbothy.org)

 [portsoy salmon bothy](https://www.facebook.com/portsoy.salmon.bothy)

 [portsoy salmon bothy](https://www.instagram.com/portsoy.salmon.bothy)



## NEW IN 2025

### 12 St. Brendan's Church, Inverboyndie, Banff

St Brendan's Church (Remains of),  
Inverboyndie, Banff, AB45 2JJ



#### Opening Times:

Saturday 20th OPEN

Sunday 21st OPEN

St Brendan's Church is a ruined 17th Century church, likely built on the footprint of a medieval church and incorporates portions of its masonry. It stands on high ground with wide-reaching views across Banff Bay. It has an interesting connection to Arbroath Abbey, probably given by King William the Lion around the time of the foundation of Arbroath Abbey. There are records of the site describing use by monks back as far as 1200.

Following a period of restricted access due to safety concerns around a section of collapsed boundary and the condition of the ruined church and burial vault, we are delighted to encourage visitors to the site after the recent completion of a grant aided scheme of stabilisation, repair and restoration funded by UK Government through UKSPF. Historic Environment Scotland, Whitehills and District Community Council and The Pilgrim Trust.

The burial ground has 17th, 18th century and later tombstones and there are 7 Commonwealth War Graves. There is also interpretation on-site with information on some of those buried in the graveyard, detailing their interesting and in some cases surprising lives. Why not explore the graveyard and see if you can find your family name, you never know you may find one of your ancestors!

Churches have sat in the heart of our communities from the earliest times, and they are often the first expression of architecture in a place. St. Brendan's largely dates from the 1630s

but was much altered in the 18th century. This is a lovely site to explore and imagine what the original building would have looked like and how it has evolved. Looking out for features such as bell cots, burial lairs, galleries and vaults and wondering how the building would have been pieced together, before it fell into ruin.

The churchyard which contains the ruins is open for you to explore at your leisure.

 [Aberdeenshire Architecture Heritage Design](#)

 [boyndie old parish church](#)





## NEW IN 2025

### 13 St. Drostan's Church, Aberdeen

Elphin Street, New Aberdeen, AB43 6LH



#### Opening Times:

Saturday 20th 10am - 4pm

Sunday 21st 12noon - 4pm

Aberdour St Drostans Church dates to 1818 when it replaced a much earlier building down by the beach. It marks a history of Christian worship dating back to the 6th Century when St Drostan arrived at Aberdour Beach, bringing Christianity to the Northeast of Scotland.

Although still in use for Sunday worship, the building has been repurposed to accommodate a heritage display area and drop in café. These changes have been brought about by the recently formed 'Friends of New Aberdour Church Pilgrimage and Heritage Initiative'



Please see below for the exciting activities to offer over the event weekend:

- Craft demonstrations of Christmas Crackers, Diamond Painting, Quilting, Patching and Ribbon Work - Saturday 10.00am - 12noon and Sunday 2.30pm - 4.00pm
- Demonstration of Spinning and Weaving - Saturday 2.00pm - 3.00pm
- Nescol Art Exhibition. A display of artwork from pupils studying at the Fraserburgh Campus of the college – available all day (both days).
- Robertson Pens. This is a small craft and gift business who create exquisite, handcrafted pens and unique items. All day (both days) demonstration of personalisation of slates using a laser engraver, from personal to business with items to purchase.
- Heritage And Pilgrimage Displays. On both days there will be a display of heritage artefacts and a rolling presentation of the St Drostan story.

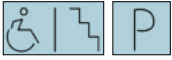
No booking required.

 [aberdourstdrostans.org.uk](http://aberdourstdrostans.org.uk)



## 14 The Granary, Portsoy

Shorehead, Portsoy, AB45 2PB



### Opening Times:

Saturday 20th 12noon - 4pm

Sunday 21st 12noon - 4pm

The North East Scotland Preservation Trust (NESPT) has been left six historic, listed buildings at Portsoy Harbour in the will of the late Tom Burnett-Stuart. The category B listed Granary will be open together with the Portsoy Marble Shop, which is located within the category A listed Marble Warehouse designed by John Adam.

The Category B Listed Granary will be open and will contain a small exhibition about Tom Burnett-Stuart, the legacy, the work of the NESPT and proposals for bringing the buildings back into productive use. The Portsoy Marble Shop will be open (located in the category A listed Marble Warehouse designed by John Adam) and it will be possible to view the category B listed Marble Workshop, the category C listed Rag Warehouse and the category B listed houses at 6/7 Shorehead from the outside.



 [nespt.org](https://www.nespt.org)

 [North East Scotland Preservation Trust](#)

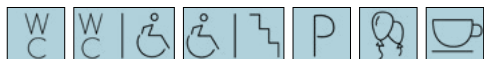
 [nespt projects](#)



# BUCHAN

## 15 Aberdeenshire Farming Museum, Aden Country Park

Aden Country Park, Mintlaw, AB42 5EE



### Opening Times:

Saturday 20th 10am - 4pm

Sunday 21st CLOSED

Set within the old Home Farm Steadings courtyard at Aden Country Park, Aberdeenshire Farming Museum brings to life the story of farming in the Northeast of Scotland. The museum includes the reimagined Horseman's House and Weel Vrocht Grun (well worked ground) exhibition. Also located in the buildings are a visitor information centre, café, gift & craft shop.

Aden's links to its farming heritage can still be seen today, through its buildings and through the exhibitions in the Aberdeenshire Farming Museum. The reimagined Horseman's House gives a window to the past giving an impression of what family life of an important farm servant would have been like in the 1920's

Join Aberdeenshire Museums Service as we celebrate Scottish Archaeology Month at the Aberdeenshire Farming Museum. Learn about the fascinating archaeology collections in the care of Aberdeenshire Museums Service. Come along and enjoy short talks introducing archaeological discoveries and research from Aberdeenshire. Family friendly activities will be on offer, including children's trails, demonstrations and guided walks.

Talks are free but please pre book to guarantee your place, other activities are free to drop in. For further information please contact Aberdeenshire Museums Service. Full list of talks and stalls will be announced on our Facebook page nearer the time.

### Contact

E: [museums@aberdeenshire.gov.uk](mailto:museums@aberdeenshire.gov.uk), or

T: 01467 536544

 [lifelifeaberdeenshire.org.uk/museums](http://lifelifeaberdeenshire.org.uk/museums)

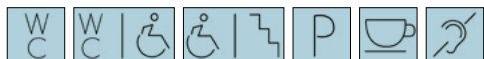
 [Aberdeenshire Museums Service](#)





## 16 Deer Parish Church

Kirkgate, Old Deer, Peterhead, AB42 5LJ



### Opening Times:

Saturday 20th 10am - 4pm

Sunday 21st 10.30am - 4pm

*(open for worship 10.30am-11.30am)*

The current church building, dating from the 18th century, was constructed on the ruins of a medieval predecessor, whose choir section still stands behind the church, a poignant reminder of its ancient lineage.

This modest yet meaningful structure shares a bond with Deer Abbey nearby, and together they are linked to one of Scotland's literary treasures—the Book of Deer. This, believed to have originated at the Abbey, offers the earliest written examples of Scots Gaelic. Once hidden away in Cambridge University Library, it was recently welcomed home for exhibition at the Aberdeen Art Gallery, rekindling interest in its sacred origins.

Inside the church, visitors can view a rare and historic Willis organ, whose craftsmanship alone is well worth a visit. Whether you're drawn by music, manuscript, or memory, the Parish Church of Deer invites you to step into a space where time stands reverently still.

Currently several community groups have come together to form a Scottish Charitable Incorporated Organisation (SCIO) to redevelop the church as a community cultural and heritage hub for central Mintlaw. The Deer Heritage Initiative.

The heritage groups involved in the SCIO are The Book of Deer Project, the Buchan Heritage Society, the Buchan Field Club, Friends of Aden Park and the local churches. The SCIO is working in co-operation with the Friends of New Aberdour Pilgrimage and Heritage Initiative.



Over the Weekend there will be an exhibition by Deer Heritage Initiative about its work and plans for the re-purposing of the church, together with information from the individual heritage groups involved. If you're lucky you may get to hear that fabulous organ playing!



## 17 The Old Manse, Stuartfield

4 Windhill Street, Stuartfield, AB42 5DR



### Opening Times:

Saturday 20th 10am - 4pm

Sunday 21st 10am - 4pm

*(pre-booked tours only)*

Stop off at the Old Manse where a warm welcome awaits visitors who are interested to find out more about the history of the 217-year-old Manse.

Visitors will be greeted within the Manse, which is now a private residence, by the owner and will be enthralled by their traditional storytelling. The tales will include images, illustrations and video covering the origin of the church and manse and the lives of some of the ministers, concentrating particularly on the first minister, James Robertson and his children, who later in life achieved tremendous success! You will also delve into the lives of the many occupants of The Old Manse, where odd coincidences exist between the first inhabitant and the existing one!

The storytelling will take place in one of the rooms of the house, which can cater for a maximum of 6 people at a time.

A Doors Open Days must, as cited by previous visitors:

**"It was the best hour we have spent in a long while."**

**"A fabulous insight into some fascinating local history, brought to life brilliantly."**

**"The effort put into the research was evidently visible in the slides. We loved it!"**



### Booking required.

The talk is approx. 45 minutes long and should be booked in advance by either phoning 01771 624412 or 07855 537824 or email – [ablo.home@gmail.com](mailto:ablo.home@gmail.com)

**Tour times: 10am, 12pm, 2pm, 4pm**



# FORMARTINE

## 18 Fyvie Parish Church

Beech Row, Fyvie, AB53 8PB



### Opening Times:

Saturday 20th 10am - 4pm

Sunday 21st CLOSED

There has been a worshipping community in the village of Fyvie for over 1000 years. The Church is thought to have been founded by monks who evangelised Aberdeenshire in the 10th century. The Priory of Fyvie (now marked by a Cross) was a sub-Priory of the Abbey of Arbroath and monks took Services in the Church until the Reformation. Evidence of a Pre-Reformation Church may be seen in the graveyard. Part of the congregation 'went out' at the Disruption and formed a Free Church at Woodhead which closed in 1960 when the Churches reunited.

The present Church was built in 1808 and in 1902 the Chancel was added together with the 'Laird's Loft', the organ, the Vestry and the Session Room. The crowning glory of the Chancel is the unique East Window by Louis Comfort Tiffany and depicts the Archangel Michael on the Wheel of Time. The Church including galleries has seating for 1000.

Knowledgeable guides will be on hand to show visitors around and answer any questions.

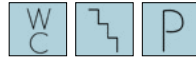
 [Friends of Fyvie Church](#)



# NEW IN 2025

## 19 Inverkeithny Church

Inverkeithny, Huntly, AB54 7XB



### Opening Times:

Saturday 20th 11am - 4pm

Sunday 21st 11am - 4pm

Nestled on a scenic bend of the River Deveron, the kirk has long been a place of meditation and reflection, with its roots stretching back over a millennium. The current church building, constructed in 1881 by A & W Reid of Elgin, showcases Gothic architectural features including pointed-arch windows and a timber gallery supported by cast-iron columns. The belfry, dated 1638, crowns the session house and hints at an earlier ecclesiastical structure on the site.

Today, the kirk is lovingly maintained by the Inverkeithny Kirk Preservation Trust, a registered Scottish charity founded in 2009. Their mission is to preserve the building's fabric and make it available for community events, occasional services, and cultural gatherings, ensuring its legacy continues to inspire both locals and visitors.

Over the event weekend members of the Trust will be on hand to provide behind the scenes tours and share with visitors the wealth of knowledge of both the church and the graveyard.

 [Inverkeithny Church](#)





## 20 Live Life Aberdeenshire Libraries

Meldrum Meg Way, Oldmeldrum, AB51 0GN



### Opening Times:

Saturday 20th 10am - 4pm

Sunday 21st CLOSED

Live Life Aberdeenshire Libraries facility is a purpose-built headquarters with the local public library on site. The building is the central distribution point for the circulation of books and resources to the 34 libraries across Aberdeenshire. This working warehouse is the hub of the service, also providing resources to primary and academy schools, HMP Grampian, Care Homes, and to our Doorstep Delivery customers.

The headquarters is also home to Live Life Aberdeenshire's Local Studies department which has a wealth of resources available to those with an interest in exploring their local and community heritage, including a collection of local themed books, newspapers, photographs, maps, and many resources to support genealogy research.

Live Life Aberdeenshire Libraries provide customers with access to a wealth of information and access to reading to support lifelong learning for current and future readers. The Local Studies Centre has resources available to those



with an interest in exploring their past and local and community heritage.

There will be an excellent opportunity to purchase stock withdrawn from the catalogue, both non-fiction and fiction. There will be print books, audio books. Local history books, maps and CDs, so come along and grab a bargain. Drop-in anytime between 10am and 4pm.

In addition to the book sale the library headquarters will also be offering tours of the building and Local Studies Centre. Find out what happens behind the scenes at library headquarters and how they distribute books across Aberdeenshire. As part of the tour, delve into the past with the Local Studies team and browse their historical resources.

 [livelifeaberdeenshire.org.uk/libraries](http://livelifeaberdeenshire.org.uk/libraries)

 [once upon a shire](#)



## 21 Tarves Heritage Centre

1 The Square, Tarves, Ellon, AB41 7GX



### Opening Times:

Saturday 20th 1pm - 4pm

Sunday 21st 1pm - 4pm

Housed in a Victorian school building dating back to 1837, the Tarves Heritage Centre sits proudly in the heart of Tarves village's conservation area.

Within the Heritage Centre visitors will be treated to a glimpse of a different era. An authentic Victorian schoolroom has been lovingly recreated from 1881, when the school first opened to both boys and girls. Visitors can try writing on slates, dress in period clothing, and even experience pen-and-ink exercises—perfect for immersive learning and photo opportunities.

The Corbert Room: A rich collection of local memorabilia, showcasing the rhythms of rural life and social history through objects, photographs, and archival materials.

Rotating Exhibits: Displays change regularly, so each visit offers something new—from 1950s kitchens to local shops that once sold “everything from a needle to a camel”.

The centre is run by passionate volunteers who bring the past to life with warmth and insight.

For the event guides will be on hand offering opportunities to use pen and ink, covering a book, and various other displays linking to our theme including a photographic slide show of times in our area.

 [tarvesheritage.org.uk](http://tarvesheritage.org.uk)

 [Tarves Heritage Project](#)

 [Tarves Heritage Project](#)



## 22 The National Decommissioning Centre

Main Street, Newburgh, AB41 6AA



### Opening Times:

Saturday 20th 10am - 4pm

Sunday 21st CLOSED

(pre-booked tours only)

The National Decommissioning Centre (NDC) is a multimillion-pound research and development complex located in Newburgh Aberdeenshire. The centre works in partnership with industry, regulators, and other key stakeholders to transform the decommissioning of energy assets and support the sector's transition to net zero emissions.

The NDC's project portfolio is multi-disciplinary and covers engineering, environmental, economic, and regulatory aspects. The NDC is home to a unique state-of-the-art simulator – a walk-in 9m diameter, 300-degree visual immersive environment with 4 control stations providing real-time and real-physics simulations. Other advanced facilities at the centre include a high-power laser, indoor water immersion tank, hydrostatic pressure chamber and several large capacity environmental chambers.

On the day visitors will receive a brief introduction/presentation to the NDC, followed

by a guided tour and demonstration of the walk-in 300-degree marine simulator, offering a visual immersive environment with 4 control stations providing real-time, real-physics simulations. Attendees will have the opportunity to operate the control stations and a simulated activity. Attendees will also have a guided tour of other facilities including the indoor immersion tank, hydrostatic testing and environmental chambers.

- There will be displays and films highlighting research/projects at NDC.
- Drop-in activities for children will be available, e.g. simulator, pressure test, kitchen science, drawing and colouring
- Introductory Presentation followed by tours of simulator and facilities (90 Mins)
- Introduction: up to 30 participants at one time
- Tour Groups: 10 participants per tour
- Children's Activities: 6 at each activity

**Tour times: 10.30, 12.30, 14.30.**

**Booking required.**

Email NDC Administrator Catherine Skinner to book: [catherine.skinner@abdn.ac.uk](mailto:catherine.skinner@abdn.ac.uk)

 [ukndc.com](http://ukndc.com)

 [decomcentre](http://decomcentre)





## 23 Ythan Lodge of Freemasons

Masonic Hall, Station Road, Ellon, AB41 9AE



### Opening Times:

Saturday 20th 12noon - 4pm

Sunday 21st CLOSED

Building of this Masonic Temple began on the 21st of March 1923.

Located in Ellon, this Masonic Temple has served as the spiritual and ceremonial home of Lodge Ythan for over a century. The building welcomes you with a small entrance hall leading through to a library room then into the main Temple itself.

The fireplace, both functional and symbolic, stands as the heart of the building. It's adorned with the names of past Right Worshipful Masters, offering a tangible link to generations of Freemasons who've shaped the lodge's legacy.

The ante room, added after the original construction, complements the building's layout and provides a quiet space for reflection or preparation.

The lodge is part of the Province of Aberdeenshire East, one of 15 daughter lodges under the Provincial Grand Lodge, and remains a vibrant hub of Masonic activity.

During Doors Open Days, visitors are welcomed into the entrance hall, library, and main temple, where Freemasons are on hand to share stories and answer questions. It's a rare chance to step inside a space that's usually reserved for ritual and fraternity.



# GARIOCH

## 24 Bennachie Visitor Centre

Pitcaple, Inverurie, AB51 5HY



### Opening Times:

Saturday 20th 10am - 4.30pm

Sunday 21st 10am - 4.30pm

The result of a design competition, the circular building of the Visitor Centre reflects the historic hill fort on the dominant peak of Mither Tap. The south-facing high windows allow natural light and solar warmth into the building. The building uses natural materials to reflect the woodland setting and the drystone dyking heritage of the area.

Nestled at the foot of Mither Tap, the Bennachie Visitor Centre was inspired by the natural and social history of the iconic Bennachie hill range, and the people who have called it home over the centuries. Today it links the past with the present and welcomes visitors from all around the world who discover that Bennachie is more than just a hill.

Celebrating its 30th anniversary this year the Bennachie Visitor Centre was opened by HRH The Prince of Wales on 27th April 1995.


The Bennachie Visitor Centre is managed and maintained by the Bennachie Centre Trust, a voluntary organisation and registered charity. The Centre, which is open daily April-October, provides a focus for visitors to discover Bennachie and increase their understanding and enjoyment of the social, cultural and natural history of the area. It provides exhibition space, educational materials, multi-media interpretation, and acts as a focus for public events and activities as well as community initiatives. Entry is fully accessible, free, as are most events and activities. Facilities include toilets (open all year round), a community room, refreshments and a gift shop.

13th to 21st September sees the Bennachie Visitor Centre host local artists who will be showcasing and demonstrating as part of North East Open Studios (NEOS).

No booking required.

 [bennachievisitorcentre.org.uk](http://bennachievisitorcentre.org.uk)

 [bennachie visitor centre](https://www.facebook.com/bennachie.visitorcentre)



**Bennachie Centre Trust**

Our aim is to raise awareness and appreciation of Bennachie, its nature, geology, history and conservation, by environmental education and interpretation

WE ARE A Scottish Charitable Incorporated Organisation (SCIO), responsible for maintaining and improving the Bennachie Visitor Centre and its facilities


We raise money via shop sales, room hire, grants and donations to do this

Plants around the Bennachie Visitor Centre

A guide to plants found around the Bennachie Visitor Centre

Trustees are volunteers, who help the Trust achieve its goals. Contact [bennachie.warden@aberdeenshire.gov.uk](mailto:bennachie.warden@aberdeenshire.gov.uk) if you want to help

The Trust works with Aberdeenshire Council, Forestry & Land Scotland, the Bailies of Bennachie and others to achieve our aims

 [www.bennachievisitorcentre.org.uk](http://www.bennachievisitorcentre.org.uk)  



## 25 Elyza Fraser Mausoleum

Cluny Old Churchyard, Cluny, AB51 7RS



### Opening Times:

Saturday 20th 12noon - 4pm

Sunday 21st 12noon - 4pm

The Mausoleum was built in 1808 for Miss Elyza Fraser, the owner of Castle Fraser (now a National Trust for Scotland property). It was designed by her friend the architect James Byers of Tonley, a noted Scottish architect of the 18th Century, founder member of the Royal Society of Edinburgh and a prominent Jacobite. Miss Elyza Fraser died in 1814 and is buried in her Mausoleum along with several generations of her family, the last interment being in 1946.

Now more than 200 years old, the Elyza Fraser Mausoleum sits within Cluny Kirkyard and is a category A listed building. The North East Scotland Preservation Trust (NESPT) own the Mausoleum.

This year the Mausoleum has been undergoing an essential repairs project in partnership with the Friends of the Elyza Fraser Mausoleum, which is scheduled to complete in September providing a great opportunity to visit the newly restored Mausoleum.

On the day members of the Friends of Elyza Fraser Mausoleum Group and NESPT will be on hand to talk about this year's project which has seen the Mausoleum repaired and our plans for the future. Visitors will be allowed inside the Mausoleum.

There will also be a Cluny Churchyard Treasure Trail & Eye Spy Activity for children and adults alike.

 [Elyza Fraser Mausoleum](#)

 [North East Scotland Preservation Trust](#)

 [Nespt\\_projects](#)

 [North East Scotland Preservation Trust](#)





## 26 Garioch Heritage Centre

Loco Works Road, Inverurie, AB51 4FY



### Opening Times:

Saturday 20th 10am - 4pm

Sunday 21st 10am - 4pm

The Garioch Heritage Centre sits in the renovated Carriage and Wagon Workshop; part of the former Inverurie Locomotive Works and is an important historic building in the area. Closed in 1969, it now has a new lease of life as home for our collections.

The Centre tells the story of life in the Garioch from the early 20th century to the present day, shedding light on the domestic and working lives of local people.

There is a gift shop, a café and activities to amuse younger visitors. Enjoy a guided tour with experienced volunteers and hear about growing up in the Garioch. Visitors can research local history and browse the Society's extensive collection of photographs and archive material in the library.



Come and visit The Garioch Heritage Centre and get that little bit of extra insight into the past. There will be specialist guides who share their personal reminiscences. You will also get an opportunity to see interesting artefacts and period costumes from our collection, not on permanent display in our gallery.

Booking not required.

 [gariochheritage.co.uk](http://gariochheritage.co.uk)

 [Garioch Heritage](#)

 [GariochHertiCen](#)



## 27 Garlogie Mill Beam Engine and Turbine House

Garlogie, Skene, AB32 6SA



### Opening Times:

Saturday 20th 10am - 4pm

Sunday 21st 10am - 4pm

Garlogie is the site of a 1799 wool spinning mill which contains the oldest steam engine in Scotland still in its original location. The engine dates from the 1830's but incorporates an 1805 Boulton and Watt cast iron beam. A 1923 72kW hydroelectric power station is also to be seen. The surviving mill buildings are Category A listed. You will be able to see around the beam engine, turbine and mill site.

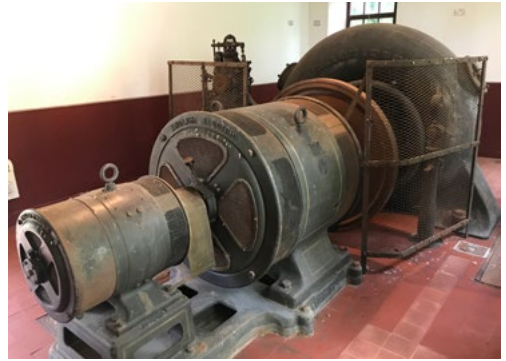
Guides from the Garlogie Beam Engine Trust will be on hand to show you around the site and explain the operation of the beam engine and turbine. An exhibition in the Garlogie Village Hall will explain the history of the site and significance of the Leuchar Burn in providing energy to Garlogie Mill over several centuries of industrial activity.

Access to the beam engine is via a short flight of steps. Other locations are wheelchair accessible. There is a pleasant walk alongside the Leuchar Burn on a paved track which would be suitable for children, dogs and wheelchairs. There is ample parking at the site.

Over the event weekend teas and light refreshments will be served.

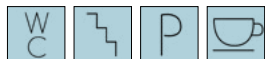
 [garlogie-engine.org.uk](http://garlogie-engine.org.uk)

 [garlogie.engine/](https://www.facebook.com/garlogieengine/)



## 28 Leslie Castle

Leslie, Inch, AB52 6NX



### Opening Times:

Saturday 20th 10.30am - 3.45pm

Sunday 21st CLOSED

Leslie Castle was one of the last great Baronial castles to be built in Aberdeenshire in 1661, incorporating the original home of the Leslie Clan, a wooden motte and bailey, later replaced by a stronger stone building.

Falling into disrepair in the 19th century; the roof was lost, gradually becoming more of a ruin until it was purchased by architect David Leslie in 1979. After spending 10 years restoring the castle and running it as a boutique hotel for a decade before, it then became a private residence. In 2018 the castle changed hands again and now welcomes overnight guests.

This year we celebrate the publication of "Our Labour of Love" The remarkable restoration and regeneration of Leslie Castle, Aberdeenshire Scotland by David Leslie, while also forging ever increasing links between the worldwide community of Leslies and their ancestral roots.

Teas/coffees/home-bakes/souvenirs and book "Our Labour of Love" will be available at a cost.

Over the weekend A 40-minute guided tour of the castle by the Baroness of Leslie, including both ancient and modern history of the building will be offered.

**Booking required. Tours last 40min, maximum of 12 people in each group.**

**Tour times: 10.30am, 11.30am, 1pm, 2pm, 3pm**

**Link to book tickets on Eventbrite:**

[BOOK YOUR TOUR](#)

 [leslie-castle.com](http://leslie-castle.com)

 [leslie.castle.guesthouse](https://www.facebook.com/leslie.castle.guesthouse)

 [lesliecastle1](https://www.instagram.com/lesliecastle1)





## 29 The Lodge of St Anthony, Inverurie

22 High Street, Inverurie, AB51 3XQ



### Opening Times:

Saturday 20th 10am - 4pm

Sunday 21st 10am - 4pm

Founded in 1783 and officially chartered in 1784, it's the oldest Masonic Lodge in the Province of Aberdeenshire West, with meeting records dating back to 1790. The current building at 22 High Street was constructed in 1881, with a major extension added in 1902 to accommodate its growing membership.

### Doors Open Days Highlights:

**Murals & Picture Gallery:** Explore visual storytelling of Masonic events and ceremonies through the ages.

**Regalia Displays:** Rarely seen treasures including aprons, jewels, and ceremonial attire that reflect the lodge's deep heritage.

**Guided Tours:** Knowledgeable members will be on hand to share insights and answer questions about Freemasonry and the lodge's history.

**Refreshments Available:** A warm welcome awaits all visitors.

Doors Open Days provides a rare chance to step inside a space that's usually reserved for ritual and fraternity—and to discover the symbolism, craftsmanship, and camaraderie that define Lodge St Anthony.

 [stanthony154.co.uk](http://stanthony154.co.uk)



# KINCARDINE & MEARN'S

## 30 Beannachar Camphill Community

Banchory-Devenick, AB12 5YL



### Opening Times:

Saturday 20th 10am - 4pm

Sunday 21st CLOSED

Join us at Beannachar, formerly known as Banchory House—a distinguished mansion on South Deeside Road, masterfully designed by Aberdeen's renowned architect John Smith and completed in 1837. Now a thriving Camphill community, it offers a welcoming environment for young adults with additional support needs through residential and day services.

### Doors Open Days Activities:

**Historical Exhibitions:** Step into the past with a curated display of maps, architectural plans, photographs, and archival documents showcasing the estate's rich heritage.

**Life at Beannachar Today:** Enjoy a video presentation and exhibition spotlighting the vibrant activities and meaningful work happening on-site.



**Grounds & Garden Tours:** Wander through the scenic landscape and explore the stunning walled garden.

**Open Workshops:** Visit our craft and horticultural workshops and pick up handmade goods and fresh produce grown by the community.

**Award-Winning Architecture:** See the residential house that earned an Aberdeenshire architectural award in 1996.

Beannachar's story is one of transformation, inclusion, and creativity. Come experience its important work over the weekend.

 [beannachar.co.uk](https://beannachar.co.uk)

 [Beannachar Camphill Community](#)



### 31 Benholm and Johnshaven Heritage Museum

The Lifeboat House, Fore Street, Johnshaven, DD10 0EU



#### Opening Times:

Saturday 20th 11am - 4pm

Sunday 21st 11am - 4pm

Benholm and Johnshaven Heritage Hub Museum is in the centre of the historic fishing village of Johnshaven within the Old Lifeboat House which was established in 1891. Run by a dedicated group of volunteers who are passionate about preserving the history and heritage of our local area, the museum offers visitors a fantastic hands-on visitor experiences telling the story and history of Benholm and Johnshaven.

This year's exhibition in Johnshaven dives into the stories of childhood in Benholm and Johnshaven, offering a warm and engaging look at growing up in these coastal communities. Visitors can explore a hands-on display of toys through the decades, sparking memories and curiosity across generations.

Johnshaven was recently featured in the BBC's Villages by the Sea, where archaeologist Ben Robinson uncovered its rich maritime and industrial past

Benholm and Johnshaven Heritage Museum will be open longer during Doors Open Days to allow visitors to view the exhibition, entry is free, and friendly volunteers will be there to answer any questions. There is a multi-sensory, hands-on exhibition with lots of examples of toys to reminisce over, investigate and explore, an old school area and a scavenger hunt to help keep children entertained.

The museum is in a Category C Listed Building and is within the Conservation Area of Johnshaven. The building was constructed to house the Johnshaven lifeboats in 1891 and is an important landmark in the architecture of the village. It is important to us to preserve the integrity of the building and to celebrate The Lifeboat House's past as a key landmark in harbour area.

 [Johnshaven heritage hub museum](#)

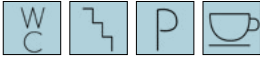




**NEW IN 2025**

**32 Bervie Brow Research Station**

DD10 0TL What3Words: <https://what3words.com/postings.spirits.radio>



**Opening Times:**

Saturday 20th 10am - 4pm

Sunday 21st 10am - 4pm

*(pre-booked tours only)*

Hidden beneath a dramatic coastal promontory, this remarkable underground bunker at the former RAF Inverbervie was built in the 1950s as part of the ROTOR radar defence programme and was designed to detect Soviet bombers using Type 13 and Type 14 radar systems. It was later used by the US Navy in conjunction with RAF Edzell and eventually served as a British Army emergency communications centre.

The structure spans 10,000 square feet underground, with 10ft-thick concrete walls, blast doors, and a fortified tunnel—built to withstand nuclear attack.

Now privately owned, the site is undergoing restoration and creative repurposing, with interest from artists and historians alike. Its labyrinthine interior, once a hub of surveillance and secrecy, is being transformed into a space for learning, innovation, and cultural reflection.

A powerful example of mid-20th-century defensive architecture, the site reflects Cold War geopolitics and technological urgency. Once top secret, the bunker's heavy blast doors now open for an atmospheric journey into the past.

Guided tours led by an architectural historian will explore the site's architecture and design.

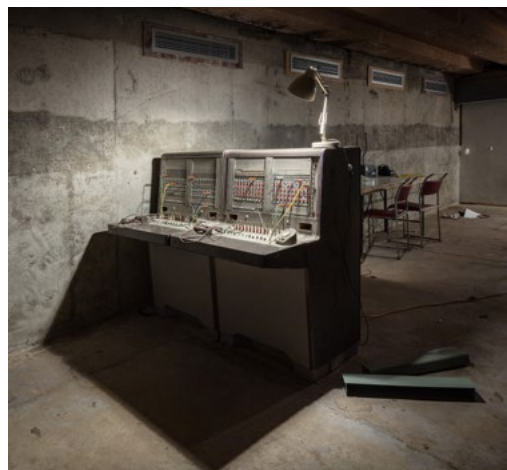
**Tour times: 10am, 12.30pm and 3pm.**

Link to book tickets:

**[BOOK YOUR TOUR](#)**

 [berviebrow.org](https://berviebrow.org)

 [berviebrowresearchstation](https://berviebrowresearchstation)



### 33 Hallgreen Castle

King David Drive, Inverbervie, DD10 0PE



#### Opening Times:

Saturday 20th 10am - 5pm

Sunday 21st 10am - 5pm

Situated in the Burgh of Inverbervie overlooking the Bay is Hallgreen Castle. The castle dates from the 14th century and has received various extensions and modifications over the years, but the core building survives mostly intact. The castle is set in 4 acres of grounds and is 3 storeys high. Old gun loops are visible in the walls.

Doors Open Days 2025 will offer the unique opportunity for visitors to catch a glimpse within the walls of this modified 14th century castle currently occupied as a private residence.

An art exhibition will be held in the Great Hall and the Knights of Monymusk will be holding demonstrations of medieval combat techniques and traditional equipment and weaponry within the castle gardens.

Unfortunately, the castle is not suitable for wheelchair access due to stairs on all levels. Minimal parking is available at the venue and visitors are requested to park at the beach carpark and enjoy the short walk up to the castle.

 [HallgreenCastle](https://www.facebook.com/HallgreenCastle)

 [knightsofmonymusk.com](https://www.knightsofmonymusk.com)



## 34 Maryculter Trinity Church of Scotland

Kirkton of Maryculter, AB12 5FS



### Opening Times:

Saturday 20th 10am - 4pm

Sunday 21st 10.30am - 4pm

*(open for worship 10.30am - 11.30am*

*Coffee & Fellowship 11.30am - 12.30pm)*

Maryculter Trinity Church was formed by the coming together of Banchory-Devenick, Cookney and Maryculter parishes. The history is extensive with the earliest parish being created in 1163 and Maryculter parish having links to the Knights Templar.

The current church building was built in 1787. It has had several extensions, 1882, 1959/60 and 2006 with work carried out through 2016/17 to modernise the building that is used by the

congregation of Maryculter Trinity Church from all over the three original parishes to meet and join in praise of the Lord together. Come and see the result. Read about the history, see our fine stained-glass windows and find out what goes on here at Maryculter Trinity Church.

Over the weekend visitors will be provided with insights regarding the history and renovations done to the Church to bring it to its current structure. Booklets will be provided informing of the history of the graveyard, display of interviews with people who hold roles within the Church and of Church history and current activities.

Refreshments will be available so please enjoy this opportunity to reflect on your Doors Open Days experiences.

 [marycultertrinitychurch.org.uk](http://marycultertrinitychurch.org.uk)

 [Maryculter Trinity Church](https://www.facebook.com/MaryculterTrinityChurch)





## 35 St Cyrus National Nature Reserve

The Old Lifeboat Station, Nether Warburton,  
St Cyrus, DD10 0AQ



### Opening Times:

Saturday 20th 10am - 4pm

Sunday 21st 10am - 4pm

From Montrose, head north on the A92 coastal road. St Cyrus NNR is signposted on the right, immediately after the Northwater Bridge over the Esk. Follow the single-track road for 1.5 miles to the car park and visitor centre.

The windswept, storm-battered dunes of St Cyrus National Nature Reserve (NNR) might seem a little inhospitable. Winter storms and salty winds wreak havoc along the coastline, but natural barriers of inland cliffs and a seaward ridge of sand dunes protect the St Cyrus grasslands from the ravages of the weather. The result is a small strip of warmth nestled on the north-east coast.

This is one of the richest and most diverse reserves in Britain. In summer it is awash with wildflowers and a haven for insects. There are many species of breeding birds, including meadow pipit, stonechat and skylark. In winter, large numbers of waders, ducks, geese and swans visit the estuary.

Whether your interest is birds, botany or butterflies and moths, you'll find plenty of

interest at any time of year. Or just come for a walk and enjoy the sea views. One of the best ways to see the reserve is to explore the paths or walk along the extensive sandy beach.

The weekend will be awash with information about the reserve and it's wonderful wildlife and this year will see a celebration of its geology too! From 11am-3:30pm on both days, members of the Scottish Geology Trust will explore everything rocky, pebbly and geological at St Cyrus NNR and beyond! Bringing you a display of local rocks, pebbles and agates to explore why don't you bring your own rocks and fossils along for a show and tell!

There will be fluorescent mineral display showing how ultraviolet light can transform the drabest rocks into beautiful and colourful specimens.

There will be loads of children's activities too! Make a pebble friend, a fossil or a badge!

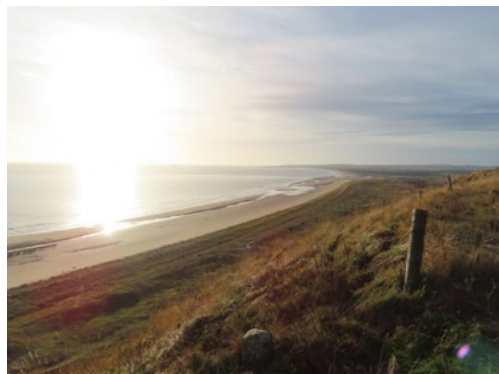
Look out on St Cyrus socials for more information relating to walks and talks!

So, whether you are young or old there will be something to take part in over the weekend!

**No booking required.**

 [nature.scot](http://nature.scot)

 [stcyrusnnr](https://www.facebook.com/stcyrusnnr)



**36 St James Episcopal Church,  
Stonehaven**

Arbuthnot Street, Stonehaven, AB39 2JB



**Opening Times:**

Saturday 20th 10am - 4pm

Sunday 21st 10am - 4pm

St James Episcopal Church is a quality example of a Grade A listed building. Although the church's website provides a comprehensive collection of images, videos and information about the building, nothing can come close to the majestic scale, detailing, beauty and peace that visitors will experience as they step through the grand church doors. A memory that will stay with you forever and a perfect example of how our built heritage can affect our emotions.

The church is home to the 'Priests and Pipes' showcasing many unique historical artefacts, explaining the history of the Episcopal Church and of John Wardle, the noted organ builder who was choirmaster here for 58 years. The exhibition includes interactive displays, and a demonstrator organ, which anyone can sit down and play!



On the Saturday there will be a coffee and cake morning in the church hall from 10am to 12.30pm. There will be tea/coffee available in the church throughout the weekend.

 [stjames-stonehaven.org.uk](http://stjames-stonehaven.org.uk)

 [StJamesStonehaven](https://www.facebook.com/StJamesStonehaven)



### 37 Stonehaven Clock Tower

The Cross, Stonehaven Harbour, AB39 2JT



#### Opening Times:

Saturday 20th 10am - 4pm

Sunday 21st 10am - 4pm

The Stonehaven Clock Tower stands tall and proud at the Cross and can be seen from around the town. The costs of the original 1790 build were met from the Common Good Fund and the sole purpose of the building was to contain the Town Clock for the local community. In 1894 the tower was heightened, and the clock was raised to its present position at the top of the square sandstone tower. Above the doorway is a large barometer, dated 1852, which was of immense benefit and used regularly by the local fishermen. In addition, the Clock Tower was also the site of one of the many public water supplies in the 19th century.

Sadly, the Tower fell into disrepair but a major refurbishment in 2015, which gained the annual Conservation Award from the Aberdeen Society of Architects, has led its re-opening as a tourist attraction.

Please note that the Clock Tower will not be staffed on Doors Open Days.



### 38 Stonehaven Lifeboat Station

Old Pier, The Harbour, Stonehaven, AB39 2JU



#### Opening Times:

Saturday 20th CLOSED

Sunday 21st 10am - 3pm

Following on from the successful community fundraising appeal, RNLI Stonehaven have recently moved into their brand-new Lifeboat Station at Stonehaven Harbour. This is a great opportunity to see round the newly opened Lifeboat Station and purpose-built boathouse, visit the shop and meet the crew who will be on hand to talk about the 'Jamie Hunter' lifeboat and explain how vital the new station has been to continue helping save lives at sea.

Tours will be available to guide visitors round the newly opened Lifeboat Station and shop, view the ILB crew kit and meet the crew who will be on hand to talk about the 'Jamie Hunter' Lifeboat.

**\*Please note that the crew will be on call that day and so may need to attend emergencies.**

 [stonehaven lifeboat station](http://stonehaven.lifeboatstation.org.uk)

 [RNLIStonehaven](https://www.facebook.com/RNLIStonehaven)





**NEW IN 2025**

**39 Stonehaven Open Air Pool**

Queen Elizabeth Park, Stonehaven, AB39 2RD



**Opening Times:**

Saturday 20th 10am - 4pm

Sunday 21st CLOSED

Stonehaven Open Air Pool is a true gem—the UK’s only Art Deco Olympic-sized Sea water lido, opened in 1934 and still going strong. Heated to a balmy 29°C during the summer months, it offers:

Seasonal fun from May to September with a paddling pool, water chute, and on-site café

Midnight swims under the stars, complete with music and entertainment

Live performances and themed events hosted by the Friends of the Pool

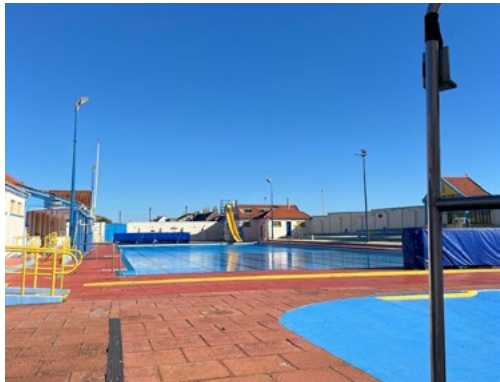
And now, with the launch of cold-water swimming in winter 2024/25, it’s embracing a whole new wave of wellness and health benefits and visitors!

It’s not just a pool—it’s a living landmark that keeps reinventing itself.



On Doors Open Days, the Friends of Stonehaven Pool will be on site to guide visitors round the lido and there will be an exhibition showing the work of the Friends of Stonehaven Open Air Pool..

-  [lifelifeaberdeenshire.gov.uk](http://lifelifeaberdeenshire.gov.uk)
-  [stonehavenopenairpool.co.uk](http://stonehavenopenairpool.co.uk)
-  [Stonehaven Heated Open Air Pool](#)
-  [Stonehaven Leisure Centre](#)
-  [Live Life Aberdeenshire](#)
-  [Aberdeenshire Council](#)



# 40 Tod Head Lighthouse

Kinneff, DD10 0TH



## Opening Times:

Saturday 20th 10am - 4pm

Sunday 21st CLOSED

Todhead Lighthouse, located south of Stonehaven, Aberdeenshire, built in 1897 by David Alan Stevenson, is now a privately owned family home, lovingly restored and reimagined.

The lighthouse is a classic example of Scottish lighthouse architecture, with its circular entasised tower, corbelled gallery, and domed lantern. David Alan was indeed the third generation of the Stevenson dynasty, following in the footsteps of his grandfather Robert Stevenson, the pioneering engineer behind the Bell Rock Lighthouse, and his father David Stevenson, who built many of Scotland's coastal lights.

The Stevenson family designed and built over 90 lighthouses across Scotland and beyond, spanning four generations and more than 150 years. Their legacy is etched into the very cliffs and coastlines of the country.

Todhead was decommissioned in 2008 and though then the Northern Lighthouse Board (NLB) removed all light mechanisms, the



structure retains its architectural integrity and atmospheric charm.

The sensitive conversion of Tod Head Lighthouse into a private residence was undertaken by Moxon Architects, who have earned acclaim for their thoughtful approach to heritage buildings. Their work at Tod Head was Highly Commended in the Aberdeenshire Architectural and Landscape Design Awards (AALDA), and they've also won multiple awards from the Aberdeen Society of Architects and the Royal Incorporation of Architects in Scotland (RIAS) for other projects.

It's a beautiful example of how historic infrastructure can be reimagined for modern life while preserving its soul.

## Doors Open Days Experience Includes:

- Tower Access: Climb the spiral stair to the top for panoramic views and a sense of the keeper's daily routine.
- Lamp & Light Rooms: Explore the spaces where the powerful lenses and clockwork once operated.

6 Guided tours, max. 5 people, one tour per hour on the hour. 10am, 11am, 12pm, 1pm, 2pm & 3pm

**PLEASE NOTE:** Children need to be able to climb the companion ladder unaided. There are restrictions on younger children accessing outside gallery.

Link to book tickets on Eventbrite:

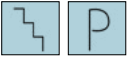
[BOOK YOUR TOUR](#)

 [todheadlighthouse](#)



## 41 Tolbooth Museum

Old Pier, Stonehaven Harbour, AB39 2JU



### Opening Times:

Saturday 20th 10am - 4pm

Sunday 21st 10am - 4pm

The Tolbooth is the oldest building in Stonehaven, dating from the late 16th century and is category A listed. The original use of the stone building was that of courthouse and prison. Today the ground floor contains a museum that showcases the building's turbulent past and Stonehaven's rich history.

Visitors on Doors Open Days can examine the model of the Earth's earliest known air breathing animal found at nearby Cowie, reminisce over past domestic life, read informative panels on notable past individuals and events, including the founding of the Scotch Colony in New Brunswick, step into a mock prison cell, view old photographs of the town and study the local geology.

The Tolbooth museum is one of the very few museums that has a permanent display of Scottish agates.



Children will be able to go hunting the dinosaur should they feel brave enough!!!!

\*Please note – the 1st floor contains the Tolbooth Restaurant which is not part of Doors Open Days.



[stonehaventolbooth.co.uk](http://stonehaventolbooth.co.uk)



[stonehaventolbooth](https://www.facebook.com/stonehaventolbooth)





# MARR

## 42 Alford Valley Community Railway

Main Street, Alford, AB33 8AD



### Opening Times:

Saturday 20th 10am - 4pm

Sunday 21st 10am - 4pm

Alford Valley Community Railway (AVCR) is a narrow-gauge railway and a much-loved community attraction that runs from the centre of Alford Village to Haughton Country Park and back. Alford Valley Charitable Community Benefit Society (AVCCBS) was formed to get this attraction back up and running and received significant funding to do so. This is a community railway operated by the community for the community and visitors are most welcome to come hear about how the funding was utilised.

There will be displays within the Station Building, behind the scenes tour of the Engine Shed and an opportunity to have a ride on the train from the village centre to Haughton Country Park and back. A Doors Open Days experience not to be missed!



Train times from Alford Station: 10.30am, 11.15am, 12pm, 12.45pm, 1.30pm, 2.15pm, 3pm & 3.45pm

Booking not required

Train carriages are wheelchair accessible and noise suppressing earphones are available if required

- [avcr.org.uk](http://avcr.org.uk)
  - [AlfordValleyRailway](#)
  - [alfordvalleycommunityrailway](#)
  - [search 'alford valley community railway'](#)
  - [Alford Valley Community Railway](#)
  - [Trip Advisor](#)
- ALFORD VALLEY COMMUNITY RAILWAY (2025)  
All You Should Know BEFORE You Go (with Reviews)



## NEW IN 2025

### 43 Books Abroad, Rhynie

Richmond Avenue Industrial Estate, Rhynie,  
AB54 4HJ



#### Opening Times:

Saturday 20th 10am - 4pm

Sunday 21st 10am - 4pm

Books Abroad is a charity which recycles good quality donated books from schools, colleges, libraries, etc and redistributes them to educational establishments worldwide in response to specific requests for support.

The books are a valuable resource in these countries improving literacy and providing education which in turn helps to alleviate poverty.

At the warehouse in Rhynie the books are sorted, selected and packaged by volunteers and palletted in preparation for a container to be filled and shipped to its destination.

Recycling these books gives them a useful second life and reduces landfill.

During Doors Open Days come to Rhynie and see behind the scenes at Books Abroad.

The warehouse will be open and volunteers available to explain how the donated books are sorted, selected and packaged.

Book donations are welcome on the day – see the website for appropriate books required.

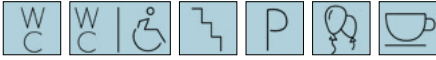
Also an opportunity to view the many books on more specialised genres unsuitable for the overseas projects but available over the weekend for a small donation.

 [booksabroad.org.uk](https://booksabroad.org.uk)



## 44 Braemar Castle

Braemar, AB35 5XR



### Opening Times:

Saturday 20th 10am - 5pm

Sunday 21st CLOSED

Braemar Castle, built in 1628, is not only a striking Aberdeenshire stronghold, it's also Scotland's first community-run castle, lovingly cared for by locals who keep its story alive.

Step inside and uncover centuries of intrigue, from clan chiefs and Jacobite rebellions to the marching redcoats who once garrisoned its rooms. Meet the glamorous Frances Farquharson and her husband Alwyn, whose vision and charisma turned Braemar from a quiet village into a vibrant escape for the elite.

With every stone steeped in history and every room echoing tales of transformation, Braemar Castle invites you to experience a place where past meets present and where community truly makes history. On the day there will be tour guides, exhibition, children's story telling and a new gift shop.

 [braemarcastle.co.uk](http://braemarcastle.co.uk)

 [braemarcastle](https://www.facebook.com/braemarcastle)

 [braemar.castle](https://www.instagram.com/braemar.castle)





## 45 Cairngorm Bothies

Logie Coldstone, Aboyne, AB34 5PZ



### Opening Times:

Saturday 20th CLOSED

Sunday 21st 12noon Tour

(pre-booked tours only)

Cairngorm Bothies, holders of a Green Tourism's GOLD AWARD, offer woodland retreats within a 100-year-old Scots pine forest to eco-conscious guests seeking self-catering dog- friendly holidays. Each of the 12 bothies is completely off-grid, powered entirely by renewable energy. The accommodation is ideal for adventure seekers, natural advocates and guests who share environmental awareness.

On Doors Open Days, visitors will be treated to a behind-the-scenes adventure at Cairngorm Bothies. Learn the sustainable journey and the human powered routes that are old and new of the area.

Booking is essential. Tours begin at 12pm and can be booked via the ticket source link.



 [ticketsource.co.uk](https://ticketsource.co.uk)

 [cairngormbothies.co.uk](https://cairngormbothies.co.uk)

 [CairngormBothies](https://www.facebook.com/CairngormBothies)

 [cairngormbothies](https://www.instagram.com/cairngormbothies)

 [cairngormlodge1](https://twitter.com/cairngormlodge1)



## NEW IN 2025

### 46 Coull Kirk

Coull, Aboyne, AB34 5JR



#### Opening Times:

Saturday 20th 10am - 4pm

Sunday 21st 10am - 4pm

Coull Kirk sits gently in the Aberdeenshire countryside, on one of the oldest Christian sites in the region—first founded by St Nathalan in the 7th century. Steeped in history, the present church, built in 1796, is Category B listed and was lovingly restored in 1876, retaining its 17th-century West gable and distinctive birdcage belfry.

Inside, four exquisite stained-glass windows filter light across 18th-century pews and paraffin

lamps, preserving the character and history of previous times. The surrounding graveyard, with memorials dating back to 1751, tells silent stories of generations past and provides a wonderful opportunity for visitors to stroll slowly back in time.

Now, in a new chapter, the Coull community is working to purchase the church from the Church of Scotland—to safeguard its legacy and renew its role as a gathering place.

As part of Doors Open Days, you are invited to be a part of this journey, on site there will be guides to show you round both the church and the cemetery. A warm welcome awaits you.



## NEW IN 2025

### 47 Deeside Gliding Club, Aboyne

Aboyne Airfield, Dinnet, Aboyne, AB34 5LB



#### Opening Times:

Saturday 20th 10am - 4pm

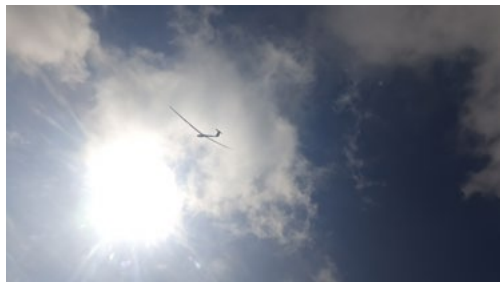
Sunday 21st 10am - 4pm

(pre-booked only)

Deeside Gliding Club enjoys a stunning setting beside the Cairngorms—a picturesque backdrop for silent flight. The club's history stretches back to the mid-1950s, when gliding first took wing in Aberdeenshire at Inverallochy near Fraserburgh. By the late '50s, activity shifted to Aberdeen Airport, the precursor to today's international terminal.

In the mid-1960s, the club relocated once more, settling just outside Aboyne, where it's remained for an impressive 58 years. This enduring base now hosts generations of enthusiasts who soar among the clouds, guided by the thermals that rise from the Dee valley below.

The club is volunteer-run and led, with great community spirit, enabling more experienced members to pass down knowledge of flying, maintenance and instructing, allowing student pilots to be the best they can be – many who have started at Deeside have gone on to join



the RAF, commercial airlines and even the Red Arrows!

The club runs year-round and welcomes, aspiring pilots, hobbyists and visitors alike.

Over the event weekend visitors will be invited in to tour the club and the Deeside Gliding history exhibition, some glider spotting too if flyable weather!

**Event booking in advance for Gliding Simulator Flying (must be at least 4'10 to reach the pedals).**

**Event times: 10.30am, 12.30pm & 2.30pm. Will last one hour.**

**Link to book tickets on Eventbrite:**

**[BOOK YOUR TICKET](#)**



[www.deesideglidingclub.co.uk](http://www.deesideglidingclub.co.uk)



[glidedeeside](#)



[deesideglidingclub\\_official](#)





## 48 Downie's Cottage, Braemar

Tomintoul, Braemar, AB35 5XX



### Opening Times:

Saturday 20th 10am - 4pm

Sunday 21st 10am - 4pm

Downie's Cottage stands as a rare survivor from the 19th century, originally built by John Downie—a crofter who earned extra income guiding Victorian gentry through the surrounding mountains. His modest cottage continued to shelter members of his family until the 1920s, after which it was abandoned to the elements.

For decades, the cottage sat largely untouched, its secrets preserved beneath layers of time. That changed in 2006, when new owners acquired the property—initially with permission to demolish it. But they saw something more. Beneath the corrugated iron roof lay the original heather

thatch, remarkably intact. Inside remained details of simpler times: box beds, a timber hinging lum, and interiors steeped in history.

They sought guidance from, then Historic Scotland, and Downie's Cottage was awarded Category A listing, recognising its national significance. Restoration began, and over the next decade, the cottage was painstakingly revived. By 2017, it reemerged with discreet modern comforts woven into its historic fabric.

Today, the building radiates its past. The attic still holds colourful prints and faded newspapers from the late 1800s and early 20th century, offering a time capsule of domestic life. The essence of the original cottage—the quirks, the craftsmanship, the soul—remains lovingly intact and continues to survive for years to come.

A rare opportunity to step into the past.

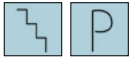
 [Downie's Cottage](#)

 [Downie's Cottage](#)



# 49 Finzean Bucket Mill

Finzean, Birse, Banchory, AB31 6NE



## Opening Times:

Saturday 20th 11am - 4pm

Sunday 21st 11am - 4pm

(pre-booked tours only)

Built in 1853, it stands on the site of an earlier mill. Developed by Peter Brown, three generations of the Brown family ran the Bucket Mill until the late 1970s, when stewardship passed to Stan Moyes, who with the help of many friends, repaired and returned the mill to working order, making Buckets from the same special 'commonty' woodland which sustained the mills of Finzean for over 200 years.

In 1999 the Birse Community Trust became the custodian of the Bucket Mill. In 2024, a new not-for-profit social enterprise, the Finzean Bucket Mill Community Interest Company was formed to safeguard the skills and knowledge accrued by Stan to enable them to be passed onto the next generation of bucket makers.

Plans are afoot to make repairs to the mill, which needs urgent repairs to the weir, sluice gates, mill lade and waterwheel.

Tours of the mill, which will last 1 hour, are available at the following times: 11am, 1pm and 3pm.

Link to book:

 [ticketebo.co.uk](https://ticketebo.co.uk)

 [birsecommunitytrust.org.uk](https://birsecommunitytrust.org.uk)

 [BirseCommunityTrust](https://www.facebook.com/BirseCommunityTrust)



## 50 Forgue Old Kirk

Church Terrace, Forgue, AB54 6BY



### Opening Times:

Saturday 20th 10am - 4pm

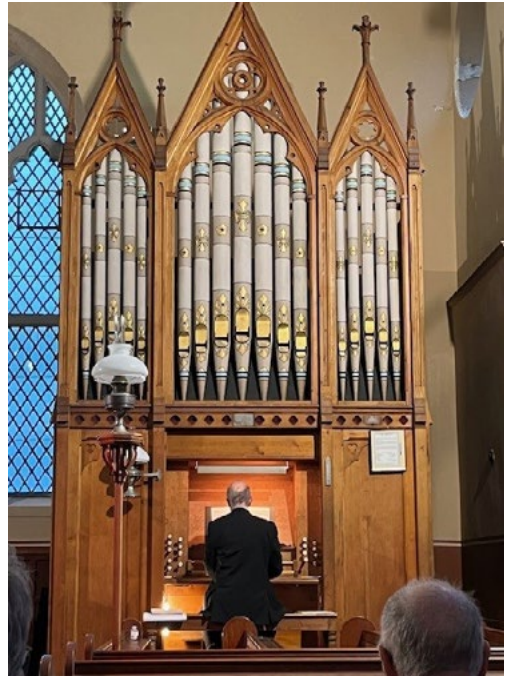
Sunday 21st 10am - 4pm

A category B listed property designed by the well-respected northeast architect Archibald Simpson. The building stands raised up on a hill overlooking the graveyard and site of the earlier St Margaret's Church, the dedication taking place prior to the 16th century Scottish Reformation. The Kirk was once the centre of the very large Parish of Forgue but is now a community building opened in 1997.

The medieval kirk was demolished in 1819 and rebuilt to the imposing rectangular design of Archibald Simpson and retains a fine presence with its massing and quality stonework. In addition, some fine interior detailing remains including 1819 painted plastered ceiling and remnants of acanthus design stencilling. In 1875 the interior was redecorated, and a new organ was installed. In 1926 the pews and the dais were renewed; the gallery was simplified, and the organ moved from its original central position to the southeast corner.

Today the Old Kirk continues to remain at the heart of the local community hosting events every month including three organ recitals and the Forgue community carol service.

Over the event weekend guides will be on hand to show you round the church and its exhibition, there will also be organ music being played both days between 3pm-4pm. A children's tour and selection of toys will also be offered.



 [friendsforguekirk.org.uk](http://friendsforguekirk.org.uk)

 [FriendsofForgueKirk](https://www.facebook.com/FriendsofForgueKirk)



## 51 Leith Hall

Kennethmont, AB54 4NQ



### Opening Times:

Saturday 20th 10.30am - 3.30pm

Sunday 21st 10.30am - 3.30pm

Leith Hall was originally built as a traditional Scottish tower house. It has been added to by successive generations of the Leith-Hay family with the last additions being completed in 1906. It has been in the care of the National Trust for Scotland since 1945.

The Doors Open Days Tour will complement the normal guided tour and will focus on Leith Hall architectural history and the changing shape of the house across the different Lairds'

tenure. In addition visitors can understand the Jacobite symbolism within Leith Hall, by looking at how the history of this period can be told through the stories of the people that lived here, how it is expressed in the architecture of the hall, and how it has shaped the hall today.

Visitors to Doors Open Day Event should note that the Hall is open as usual.

**Tour times: 11am and 2pm**

**Booking required for tours.**

**Link to book tickets on Eventbrite:**

**[BOOK YOUR TOUR](#)**

 [nts.org.uk/](https://nts.org.uk/)

 [LeithHallGardensEstate](#)



## 52 Number 30, The Square, Huntly

28-30 The Square, Huntly, AB54 8BR



### Opening Times:

Saturday 20th 10am - 4pm

Sunday 21st 11am - 4pm

Step into Number 30, where the vibrant pulse of the Huntly Community thrives!

For centuries, Huntly's town square has been the beating heart of the community—a place where generations have gathered to celebrate, connect, and shape the town's story. From historic events to everyday moments, it has long been the centre of civic life.

Yet like many town centres across the country, Huntly has faced challenges in recent years. Changing habits, economic shifts, and declining footfall have taken their toll, leaving once-vibrant spaces underused and undervalued.

Now, a new chapter begins. The transformation of a key building in the square into a community-owned and operated centre. Designed to meet the needs of the 21st century, this revitalised space will offer opportunities for learning, leisure, enterprise, and connection—reigniting the square's role as a place for all.

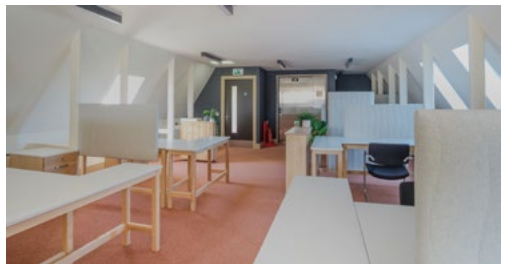
This project is more than bricks and mortar. It's a catalyst for renewed confidence, fresh investment, and a shared belief in Huntly's future.

Over the event weekend visitors will be provided with behind-the-scenes tours around the building sharing our knowledge of the building's history and its recent renovation. From its humble beginning to this now spacious community facility.

**Tour Booking Essential.** Please email [Number30@huntly.net](mailto:Number30@huntly.net) to book your place.

 [number30.org](http://number30.org)

 [number30](https://www.facebook.com/number30)



NEW IN 2025

53 St Andrew's Church, Glass

Glass, Huntly, AB54 4XH



Opening Times:

Saturday 20th 10am - 4pm

Sunday 21st 10am - 4pm

Tucked away in rural Aberdeenshire near the banks of the river Deveron, St. Andrew's Kirk in Glass is now lovingly cared for by a local registered charity and is widely regarded as one of the most beautiful churches in the region. With its own small car park and knowledgeable guides on hand, visitors are warmly welcomed to step through its doors and discover a truly awe-inspiring space.

Originally built around 1574, shortly after the Reformation, the church was dedicated to St. Andrew. It was rebuilt in 1782 with a larger footprint and later remodelled in 1903 into the impressive form we see today.

The church remains an active part of the community, hosting weddings, funerals, and seasonal services—including cherished Christmas celebrations.



Of particular note are the stained-glass windows by Douglas Strachan, Aberdeen's celebrated artist and designer of the windows in the Scottish National War Memorial at Edinburgh Castle. These windows are a true highlight:

**North wall:** Triple memorial windows depicting Faith, Hope & Charity

**Beside the pulpit:** Shepherds at the Manger and Ascension of Christ

**Above the vestry door:** The Flight into Egypt

Each window is a masterpiece of detail and devotion, offering visitors a chance to marvel at the artistry and spiritual symbolism woven into the glass.





## 54 St Margaret's Church, Huntly

30 Chapel Street, Huntly, AB54 8BS



### Opening Times:

Saturday 20th 10am - 4pm

Sunday 21st 10am - 4pm

The Parishioners of St Margaret's Church invite you to visit this beautiful A-listed church. It was built in 1834 with the support of the influential Gordon family of Wardhouse and renovated in 1905. Located on a prominent corner site, its unusual Spanish Baroque tower and spire is presented to best advantage. The colourful interior gives a warm and uplifting welcome as your eyes will be drawn to the stencilling, large oil paintings, the intricate altar detail and magnificent ceiling.

This magnificent church was built in a Spanish style, highly unusual in northeast Scotland, due to the connections of the Gordon Family to Jerez in Spain, where some of the family had fled after Culloden. There the Gordon family established a successful Sherry business, which in part eventually helped fund the Church in Huntly. Come for a visit on Doors Open Days and hear more about the interesting history and links to Jerez-Gordon Sherry.

Information on the church history and refreshments will be available in the adjacent hall.

 [St Margaret's Church Huntly](#)



## 55 Grampian Transport Museum,

Montgarrie Road, Alford, AB33 8AE



### Opening Times:

Saturday 20th 11am - 4pm

Sunday 21st 11am - 4pm

The Bus Collection at Alford is the home to a fascinating fleet of vehicles that have spent their lives being used as public transport across the vast road networks of Aberdeen City and Shire. The collection is maintained by The Aberdeen & District Transport Preservation Trust, which was created in 2006 and as much as possible, vehicles in the Trust's care are returned to running condition and during events are presented to the public.

The collection aims to promote the education of the public by bringing together, holding, adequately housing, maintaining, preserving, and conserving a fleet of buses, coaches, trams and many other vehicles, along with any related equipment.

During the weekend visitors will receive a guided tour around the bus collection and have the opportunity to view bus preservation work in progress. Have your cameras at the ready as plenty of photo opportunities will exist as visitors

will be permitted access to many of the vehicles on display. Weather permitting there may be an external display of vehicles with the possible of experiencing a "wee hurl" around the track, an adventure for all ages to enjoy!

The Bus Collection at Alford is a short walk to the left of the main entrance to the Grampian Transport Museum. It can also be accessed from the rear entrance to the site from Stewart Road. The fleet of vehicles are housed in the large green and cream building.

 [thebuscollectionatalford.co.uk](http://thebuscollectionatalford.co.uk)

 [thebuscollectionatalford](https://www.facebook.com/thebuscollectionatalford)

 [thebuscollectionatalford](https://www.instagram.com/thebuscollectionatalford)

 [@buses\\_at\\_alford](https://twitter.com/buses_at_alford)



## 56 The Victoria and Albert Halls, Ballater

Station Square, Ballater, AB35 5QB



### Opening Times:

Saturday 20th 11 am - 4pm

Sunday 21st 11 am - 4pm

The Albert Memorial Hall, a category C listed building, was officially opened on 29th September 1875 as a community meeting place for the residents of Ballater. The ground floor also housed the local post office making the building one of the most important civic buildings in the heart of the village opposite the train station. Queen Victoria would alight here during her frequent visits to Balmoral.

The Albert Hall is on the first floor, today accessible by lift, and is used currently for various community activities. An area now designated as the Mike Sheridan Room, was added 20 years later as part of the Victoria Hall and Gordon Institute when the community needed greater space than was then available in the Albert Hall.

This year marks a truly momentous occasion—the 150th anniversary of the opening of Ballater's cherished Albert Hall. Coinciding beautifully with Scotland's annual Doors Open Day, this

historic milestone offers a wonderful opportunity to honour one of the village's most iconic architectural gems.

Visitors will be invited to view an exhibition of original plans of the building, photographs taken over the years and various pictures, documents and artefacts relating to activities linked to the Halls over nearly 150 years.

The V&A Halls stand as a proud symbol of Ballater's heritage and hospitality. As a key destination for visitors and locals alike, it continues to serve as a vibrant hub for community life. Thanks to the dedication of an active committee of trustees, the building complex is being lovingly maintained with a view to ensuring its legacy endures for generations to come.

Everyone is invited to join the celebrations, explore the Albert Hall, and experience its charm firsthand.



[victoriaandalberthalls.co.uk](http://victoriaandalberthalls.co.uk)



[VictoriaandAlbertHalls.Ballater](https://www.facebook.com/VictoriaandAlbertHalls.Ballater)



[va\\_halls\\_ballater](https://www.instagram.com/va_halls_ballater)

Given the nature of the halls and its multiple uses, some portions of the building may be unavailable to access during the tours.





## NEW IN 2025

### \*Addition\* Kemnay Village Hall

8 Aquithie Road, Kemnay, Inverurie, AB51 5GZ



#### Opening Times:

Saturday 20th 10am - 4pm

Sunday 21st CLOSED

Kemnay Village Hall is a granite building built in a traditional style around 1878 by a group of local businessmen. In 1950 it was presented to villagers, and a Trust was formed along with a Management Committee. The hall has seen a few extensions added to enhance the community space over the years and now provides a modern useable space with 3 rooms for hire. It is a bit of a tardis and well worth exploring to appreciate. The hall is managed today by Kemnay Village Hall Management Committee, a Registered Charity in Scotland.

The many and varied groups that meet at the Hall will be showcasing their activities. Old photos of Kemnay adorn the walls and archives will be available for viewing. Visitors will be welcome to take a self guided tour and there will be refreshments to enjoy.

 [kemnayhall.co.uk](http://kemnayhall.co.uk)



## Further Information & Updates

Every effort has been made to ensure the information in this leaflet is correct at time of print. For up-to-date information on our venue listings and for any changes to the programme, updates, amendments and additions, please look at the national website and on our Facebook page at the addresses below:

 [doorsopendays.org.uk](https://doorsopendays.org.uk)

 [aberdeenshire.gov.uk/doorsopendays](https://aberdeenshire.gov.uk/doorsopendays)

 [AberdeenshireArchitectureHeritageDesign](https://www.facebook.com/AberdeenshireArchitectureHeritageDesign)

If you would like any further information about the event or have any queries, please email the Aberdeenshire event coordinators at: [doorsopen@aberdeenshire.gov.uk](mailto:doorsopen@aberdeenshire.gov.uk)

Please note that visitors entering buildings do so at their own risk. Children must be accompanied. None of the participating buildings or organisations are responsible for any accidents or damage that might be incurred. The owners/custodians of the buildings retain the right to refuse access.

---

## Share your experience of Doors Open Days Aberdeenshire

We would love to hear from you about the event, the buildings you visited and your feedback. Please send us your photos of your favourite buildings and share your experiences of the day by posting them to our Facebook site.

 [AberdeenshireArchitectureHeritageDesign](https://www.facebook.com/AberdeenshireArchitectureHeritageDesign)

## Doors Open Day 2026 and beyond

If you are involved with a property that you think would make a good addition to Doors Open Days in the future, please get in touch. We look forward to hearing from you!

Clare Tierney, Aberdeenshire Doors Open Days Coordinator

With so many buildings to visit across Aberdeenshire  
on Doors Open weekend, there's something for  
everyone – what better excuse to explore the region!

[www.doorsopendays.org.uk](http://www.doorsopendays.org.uk)

DOORS  
OPEN  
DAYS

