

## Glencorse Kirk

Built in 1885 to a design by Sir Rowand Anderson, leading church architect. The four storied, saddle roofed tower (unique in the Lothians at the time) was added 10 years later.

Enjoy a visit to this beautiful listed building in its rural setting, a short walk up the Kirk Brae from Milton Bridge.



**Saturday: 1000 – 1200 hrs**

(South of Edinburgh on A701) Milton Bridge Penicuik EH26

## Lodge St Leonard Loanhead and Lasswade

This Lodge has been active in Loanhead since February 1876 when a Charter was granted by the Grand Lodge of Scotland to allow it to be formed. The foundation stone was laid on 29 April 1899.

The Lodge will be set up as per a meeting night, with Office-bearers to answer questions. Light refreshments free to visitors. Building not fully accessible but all visitors accommodated where possible.



**Saturday: 1030 – 1400 hrs  
Sunday: 1130 – 1400 hrs**

47 Clerk Street Loanhead EH20 9RE

## Straiton Pond Bat Walk

You will have the chance to see these amazing creatures and their aerial acrobatics as well as be able to identify them with our bat detectors as they swoop and chatter whilst hunting for their tea.

Torch and warm clothes required. Ages 6+. Meet at Straiton Pond main entrance (opposite McDonalds) at 1930 hrs. Booking essential! Please telephone 01875 821716 to book.

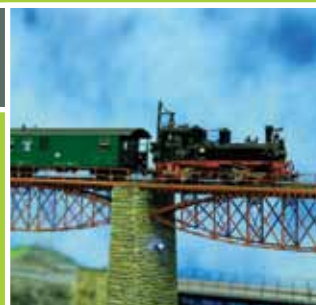


**Saturday: 1930 – 2100 hrs**

Near Straiton Retail Park Loanhead. Grid reference NT288648 on OS Land Ranger series 66 Edinburgh Map.

## Thistle Modelmakers

We are a small group of railway modellers based in Mayfield, Dalkeith, who design and make exhibition layouts. Come and see some of our layouts from around the world. Members will be on hand to put on demonstrations and answer questions and complimentary cuppa on offer too.



**Saturday and Sunday: 1000 – 1600 hrs**

Unit 51, Mayfield Industrial Estate, Dalkeith EH22 4AD

Doors Open Days is coordinated nationally by the Scottish Civic Trust. It runs throughout Scotland every September as part of European Heritage Days.

For up to the minute information follow DoD on facebook or visit our website:

[www.facebook.com/MidlothianDoorsOpenDays/](http://www.facebook.com/MidlothianDoorsOpenDays/)  
[www.doorsopendays.org.uk](http://www.doorsopendays.org.uk)  
[www.scottishcivictrust.org.uk](http://www.scottishcivictrust.org.uk)

Find DoD on Facebook:  
[www.facebook.com/dodscotland](http://www.facebook.com/dodscotland)

Midlothian Council would like to thank all of the hosts who make Doors Open Day possible.

**Note:** visitors enter venues at their own risk. Neither Midlothian Council nor the participants are responsible for any accidents or damage that occurs. Building owners retain the right to refuse access. Due to unforeseen circumstances occasionally venues may alter their programme. Up to date information on DoD will be available online via social media and website.

Find us on Facebook:  
[www.facebook.com/MidlothianCouncil](http://www.facebook.com/MidlothianCouncil)  
Follow us on Twitter: [midgov](https://twitter.com/midgov)



free

# MIDLOTHIAN DOORS OPEN DAY

Saturday 8th and Sunday 9th September 2018



[www.midlothian.gov.uk](http://www.midlothian.gov.uk)



## Newbattle Community Campus

You're invited to Midlothian's community event to celebrate the opening of the new campus! Lots of fun for all the family including music, food, taster sessions and guided tours of this state-of-the-art facility.



**Saturday: 1000 – 1500 hrs**

Newbattle Way,  
Easthouses, Dalkeith  
EH22 4SX

## Midlothian Snowsports Centre

Free half hour tubing sessions 1000 till 1200 hrs by advance booking only. Maximum 5 people one of whom must be an adult. Minimum four years old and one metre in height.

E-mail centre to book [ski@midlothian.gov.uk](mailto:ski@midlothian.gov.uk) and provide a contact telephone number.



**Saturday open from:  
0930 – 2100 hrs**

Biggar Road, Hillend, near  
Edinburgh EH10 7DU

## Soutra Aisle

Soutra Aisle, dated 1686, is a family burial vault, constructed when the Scottish church banned monuments inside churches. The unlocked crypt can be explored.

Guided tours by Director of Unique Archaeo-medical Investigations.



**Saturday: 1100 – 1600 hrs**

8 Miles South of Dalkeith  
off A68/A7 on B6368

## Old Penicuik House

Activities throughout the day for all ages.

Guided Walking Tours Saturday:  
1130 and 1330 hrs  
Sunday: 1100 hrs.

Please note converted stable block is not included.

Parking a short walk from Penicuik House at car park visible from the A766. Access to site for blue badge holders only. Contact Ranger Service 01968 670738 to arrange.



**Saturday and Sunday:  
1030 – 1530 hrs**

Old Penicuik House,  
Penicuik, Midlothian  
EH26 9LA

## The Lost Garden of Penicuik

See first-hand Penicuik Community Development Trust's progress towards restoring it to its former glory.

Access from car park (OS grid ref NT 219 599) about 2 km south west of Penicuik centre on A766 Carllops Road. Stout footwear recommended.

Tours on the hour from car park: 12:00 to 16:00 hrs.



**Sunday: 1200 – 1700 hrs**

**Last tour 1600hrs**

## The Pen-y-Coe Press and Papermaking Heritage Centre

Pen-y-Coe Press is a living museum, still operating as a retail stationer and printers.

Conducted tours around the adjacent Papermaking Heritage Centre at 1100 and 1400 hrs..



**Saturday and Sunday:  
1000 – 1600 hrs**

1, 5 & 7 Bridge Street  
Penicuik EH26 8LL

## Penicuik Community Development Trust: Penicuik Town Hall

The papermaking family built The Cowan Institute in 1894. They were nationally important social reformers: from 1799 their philanthropy funded a public library, schooling, social housing, sickness pay and pensions and piped drinking water. The Institute, Penicuik's Town Hall spread the influence of 'Scottish Baronial' in France and Japan.



**Saturday: 1000 – 1400 hrs**

33 High Street  
Penicuik EH26 8HS

## Penicuik Historical Society

Exhibition in former Council Chamber on first floor – lift available. On display will be photographs, documents and objects relating to the history of Penicuik Town Hall which opened in 1894 as the Cowan Institute. Exhibition will also include other aspects of Penicuik's rich and varied history.



**Saturday: 1000 – 1600 hrs**

Marriage Room, Penicuik  
Town Hall, 33 High Street,  
EH26 8HS

## Oakridge Group: St Margarets Development

A brand new village community St Margarets centres on the conversion of a fine historic building (formerly Rosslynlee Hospital) as stylish apartments and houses.

Tours around outside of building – booking essential!

Book online at Eventbrite  
<http://bit.do/eoZht>



**Tour dates: Tuesday 4 and  
Thursday 6 Sept.  
Tour times: 1030 and  
1200 hrs**

Roslin EH25 9QE

## Gorebridge Connected

Guided walk around proposed wild flower meadow and Newbyres Castle site 1030 hrs. Meet at back of Newbyres Nursery, 5 Hunterfield Road, EH23 4TP.

Guided walk of Heritage Trail 1300 hrs; meet at Gorebridge Church, 100 Hunterfield Road, EH23 4TT

Exhibition outlining scheme and refreshments in Trust office 1000 – 1600 hrs



**Saturday: Various**

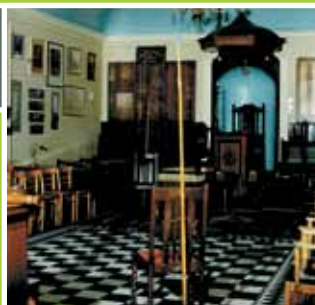
Gorebridge Community Development Trust, 58 Main Street, Gorebridge, EH23 4BY

## Dalkeith Masonic Lodge

The lodge was completed and consecrated in 1766 by the local order of Freemasons and is one of the oldest purpose-built lodge rooms in the world.

Guided tours and Lodge set out as if for Masonic Meeting.

Complimentary tea and coffee for visitors.



**Saturday: 1030 – 1500 hrs**

East High Street Dalkeith EH22 1BE

## Church of Jesus Christ of Latter-Day Saints

The church has a history with Dalkeith which dates back to 1851 when the first branch was organised in May of that year.

Visitors can find out how to get started tracing their own family history, with access to the Church's large database and there will be activities for children.



**Saturday: 1000 – 1530 hrs**

Newbattle Road Dalkeith EH22 3LQ

## Dalkeith Museum

To commemorate the centenary of the end of World War I we're remembering not only the men from Dalkeith who went to war, but also those left behind. Personal treasures, poignant postcards and photographs on show reminding the soldiers of a home and family far away.



**Saturday: 1000 – 1600 hrs  
Sunday: 1200 – 1600 hrs**

61 St Andrews Street Dalkeith EH22 1BP

## Collegehill House

Collegehill House takes its name from the Chapel being established as a collegiate Church, and from around 1660 to 1866 it was in use as The Old Roslyn Inn and provided accommodation for worshippers. It has attracted many illustrious travellers, including Robert Burns, James Boswell and William Wordsworth, to name but a few.



**Saturday: 1000 – 1600 hrs  
Sunday: 1100 – 1600 hrs**

Roslin EH25 9PU

## Mavisbank House

Meet at gated entrance to palisade fence enclosing Mavisbank House. Parking around perimeter of Policies extremely limited – please use public transport where possible.

To book E-mail [Engineshed@hes.scot](mailto:Engineshed@hes.scot) stating tour time, name and contact details (phone and email).

Stout footwear recommended, hard hats provided. Unsuitable for children.

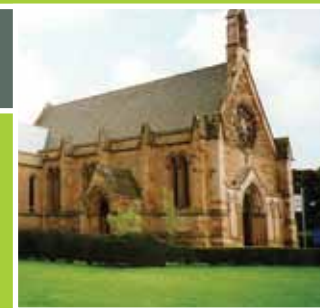


**Tours Saturday and Sunday:  
1100 hrs and 1300 hrs,  
booking essential.**

Mavisbank House and Policies, between Loanhead, Lasswade and Polton

## St Mary's Episcopal Church

Built by the 5th Duke of Buccleuch and opened in 1845, St Mary's was designed by architects William Burns and David Bryce in early English style with high double hammerbeam roof, vaulting in the chancel, magnificent stained glass windows made in France and heraldic floor tiles by Minton.



**Saturday: 1000 – 1630 hrs  
Sunday: 1400 – 1630 hrs**

Dalkeith Country Park, Dalkeith EH22 2NA

## Midlothian Camera Club

Midlothian Camera Club welcomes you to an exhibition of photographs taken by its members and a display of vintage cameras. The club caters for all levels of photographic ability and interests. It provides opportunities for its members to learn new techniques and develop their skills through activities, presentations and use of studio and darkroom facilities.



**Saturday: 1100 – 1500 hrs**

7 Polton Road Lasswade EH18 1AB

## Newbattle Church

The building of Newbattle Church, on its present site, began in 1727 and was completed in 1728/9. Its history actually dates back to the Monks at Newbattle in 1140.

Visitors can try out their musical skills on the organ.

Tours at 1100, 1200, 1300, 1400, and 1500 hrs



**Saturday: 1100 – 1600 hrs**

Newbattle Road Dalkeith EH22 3LH

## National Mining Museum Scotland



### Various opening times

#### Undercroft Tours

Sturdy shoes and jackets required.  
Hard hats provided.

Booking essential.

Tour Times: Saturday: 10.30, 1200  
13.30 and 1500 hrs

A7 Newtongrange  
EH22 4QN

BOOK ONLINE AT:  
<https://nationalminingmuseum.cloudvenue.co.uk/home>

## Cousland Smiddy and Heritage Hub



**Saturday: 1000 – 1600 hrs**

#### RURAL LIFE IN THE PAST

To celebrate 100 years of 'The Rural' in the village, there will be a Cousland SWRI Centenary Exhibition in the cottage.

'Retro' activities to try,  
blacksmithing demonstrations,  
butter churning, carpet beating  
and more.

Soup, tea and coffee available.

Cousland, off A6124, East  
of Dalkeith 31 Hadfast Road,  
Cousland, Dalkeith EH22 2NZ

## Arniston House



**Saturday 1100 – 1500 hrs**

Private family home of the  
Dundas family who acquired  
Arniston Estate in 1571.

Magnificent William Adam  
Palladian mansion begun in  
1726.

Entry by guided tour only on a  
first come basis at:-

1100, 1200, 1300, 1400,  
1500 hrs

(Southwest of Gorebridge  
off B6372) Gorebridge,  
Midlothian EH23 4RY

## Vogrie House and Country Park



**Park open: 0730 – 1930 hrs**

House Tours: Saturday: 1100,  
1300 and 1500 hrs – Ages 8+

Wild Day: Sunday 1000 – 1500 hrs

Learn how to build waterproof  
shelters using natural materials,  
and fires to keep you warm  
and monsters at bay! Meet at  
Vogrie House. Ages 8+

Booking essential for both events!  
Telephone 01875 821716 to book.

Vogrie Country Park,  
Midlothian EH23 4NU  
(South of Dalkeith on  
B6372, off A68 & A7)

## Vogrie Country Park Bat Walk



**Saturday: 1945 – 2130 hrs**

Come and join The Wildlife  
Information Centre (TWIC)  
Manager and learn about the  
different bats to be found here.

Numbers limited so booking  
essential. Book online at  
Eventbrite <https://bit.ly/2JtFJBB>

Vogrie Country Park, Nr  
Gorebridge EH23 4NU

Please drive down to Vogrie  
House for this event.

## The Wildlife Information Centre (TWIC)



**Saturday: 1100 – 1600 hrs**

The Wildlife Information Centre  
(TWIC) collects, collates and  
disseminates wildlife information  
in south/central Scotland.  
Based in Caretaker's Cottage,  
attached to Vogrie House,  
TWIC is opening to let people  
see the work we do, find out  
about our wildlife surveys and  
how they can take part.

Caretaker's Cottage,  
Vogrie Country Park,  
Nr Gorebridge EH23 4NU

## Crichton Collegiate Church



**Saturday and Sunday:  
1000 – 1600 hrs**

Crichton was built as a  
Collegiate Church by Sir William  
Crichton, Lord Chancellor of  
Scotland in the time of King  
James II. The building is now in  
the care of a Trust.

Demonstration of the unique  
pipe organ built by Joseph  
Brook (Saturday only) from  
1430 to 1530 hrs.

[www.crichtonchurch.com](http://www.crichtonchurch.com)

(South west of Pathhead  
off B6367,) Crichton  
Pathhead EH37 5XA

## Lasswade Church



**Saturday: 1300 – 1500 hrs**

The Church was opened  
in 1830 for the Lasswade  
Congregation in the United  
Presbyterian Church. In 1894  
the Church was completely  
overhauled and several  
alterations carried out. In 1929  
the UP Church united with the  
Church of Scotland.

Photographic and historic items  
exhibition.

Polton Road,  
Lasswade Midlothian

## Rosewell Parish Church



**Saturday: 1000 – 1200 hrs**

In 1871 the foundation stone  
was laid for Rosewell Church  
which was opened officially on  
22 July 1874.

All items gifted are on display.

Carnethie Street  
Rosewell EH24 9DW